



TELFERSCOT ROAD, SW12

£2,600 PCM

- Victorian conversion
- Fully refurbished
- Three bedrooms
- Close to Balham station
- Unfurnished
- Energy rating: D

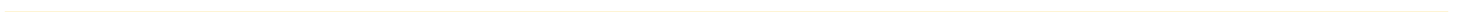




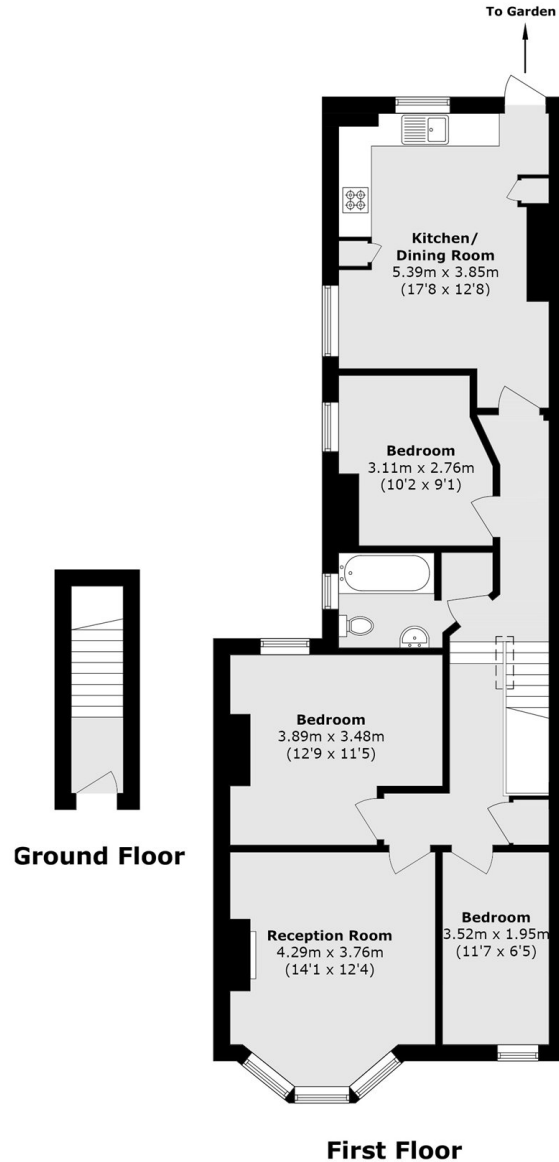
## ABOUT THE HOME

Moments from Tooting Bec Common, is this brand new refurbished first floor flat benefiting from a private garden. Comprising of two double bedrooms, a further study, a large reception room a kitchen/dining room, the property is ideal for a couple of two sharers.

Situated on Telferscot Road in the ever popular Hyde Farm Estate this property is ideally located between Balham and Streatham Hill Stations. Tooting Bec Common is just a short walk away as well as the local shops, bars and restaurants on offer.







Total Area (approx.): 84.8 sq. m (912.7 sq. ft)

### JACKSONS BALHAM

8-11 Balham Station Road,  
London, SW12 9SG  
Sales: 020 8675 6555  
Lettings: 020 8675 6565

Energy Rating: We aim to make our particulars both accurate and reliable. However they are not guaranteed; nor do they form part of an offer or contract. If you require clarification on any points then please contact us, especially if you're traveling some distance to view. Please note that appliances and heating systems have not been tested and therefore no warranties can be given as to their good working order.