



Broad Acres, Hatfield – AL10 9LE

£440,000 Freehold

END OF TERRACE HOUSE • THREE BEDROOMS • LIVING ROOM • DINING ROOM • MODERN KITCHEN • LARGE KITCHEN
• FAMILY BATHROOM • DRIVEWAY • FREEHOLD • EPC RATING – D

KINGS

Sales Lettings Management



Located in a the highly sought after Hatfield Garden Village is this well presented three bedroom end of terrace family home with off street parking for multiple cars. The ground floor comprises an inviting entrance hall, living room with fireplace, dining room with bay window and fireplace and a modern kitchen. The first floor features a large master bedroom with fitted wardrobes, second double bedroom also with fitted wardrobes, third single bedroom and a family bathroom. This family home further benefits from a large garden with garage at the end and driveway for multiple cars to the front of the house, and new carpets throughout. Furthermore, this house would lend itself well to extending (subject to the necessary permissions and consents).



Council Tax band: C

Tenure: Freehold

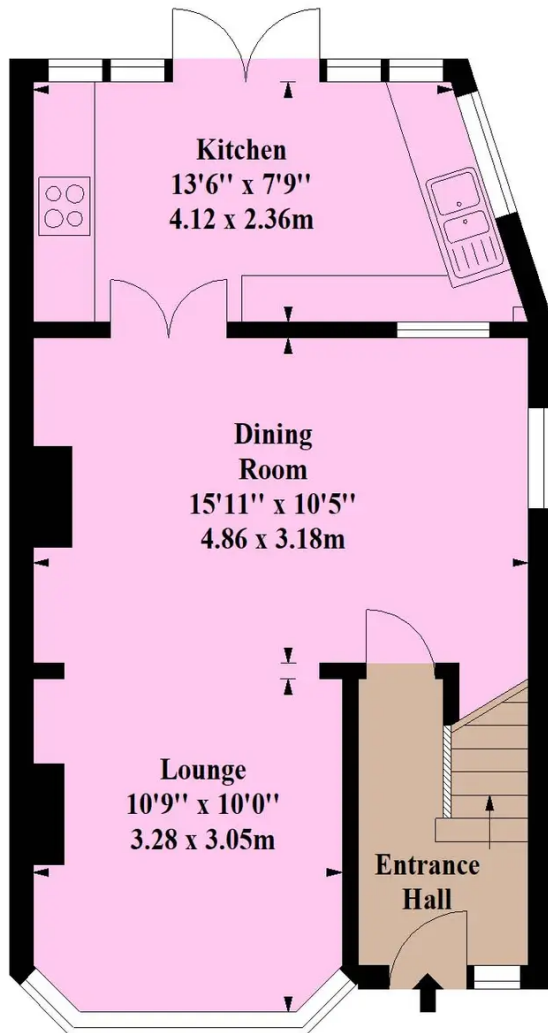
EPC Energy Efficiency
Rating: D

EPC Environmental Impact
Rating: E

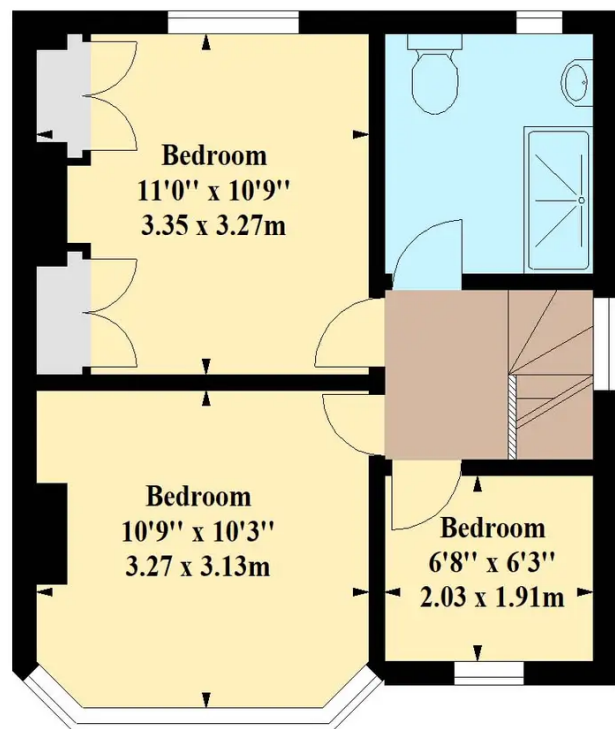


Broad Acres, Hatfield,

Approx. Gross Internal Area *
837 Ft² - 77.76 M²



Ground Floor



First Floor

Whilst every attempt has been made to ensure the accuracy of the floor plan contained here, measurements of doors, windows, rooms and any other items are approximate and no responsibility is taken for any error, omission or mis-statement. This plan is for illustrative purposes only and should be used as such by any prospective purchaser. The services, systems and appliances shown have not been tested and no guarantee as to their operability or efficiency can be given

