

5b Shelfanger
Road
Diss
IP22 4EH



5b Shelfanger Road

Guide Price £245,000

Contemporary Living in Converted Victorian Stables

Positioned within easy reach of the centre of Diss, 5B Shelfanger Road forms part of an attractive converted Victorian stable block, offering beautifully renovated accommodation that combines period character with contemporary style.

Recently refurbished to a high standard, the property has been thoughtfully designed to create bright, open living spaces whilst retaining features that reflect its heritage, including exposed beams and vaulted elements that bring warmth and individuality throughout.

The ground floor is centred around an impressive open-plan kitchen, dining and living space, ideal for modern day living and entertaining alike. French doors from both the kitchen and sitting area open directly onto the enclosed courtyard garden, creating a seamless connection between inside and out during the warmer months. The kitchen itself is finished with quality integrated appliances, ample storage and a breakfast bar, whilst a separate utility/cloakroom adds further practicality.

Upstairs, the property continues to impress with two generous double bedrooms, both enjoying excellent natural light alongside characterful beams and useful storage. The bathroom has been stylishly appointed with contemporary fittings and tasteful finishes, complementing the overall quality of the renovation.

Externally, the private courtyard garden provides a low-maintenance outdoor retreat with space for seating and entertaining, whilst off-road parking adds further convenience.

Shelfanger Road is particularly well placed for enjoying the many amenities Diss has to offer. The historic town centre, independent shops, cafés, restaurants and the beautiful Diss Mere are all within walking distance, whilst the mainline railway station provides direct services to Norwich and London Liverpool Street, making the property ideal for commuters and those seeking a well-connected Norfolk home.

Surrounded by attractive countryside and scenic walks, 5B Shelfanger Road offers an exceptional opportunity to enjoy character living in one of Diss's most convenient and sought-after locations.

Agents notes...

A pre-recorded walkaround tour is available for this property

EPC to follow

Local Authority
South Norfolk

Council Tax Band A

EPC Rating



Contact

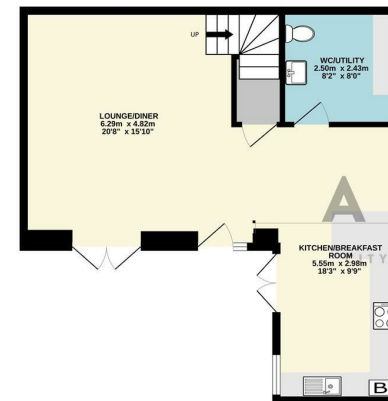
01603 964777

enquiries@attikccc.co.uk

www.attikccc.co.uk

GROUND FLOOR
51.4 sq.m. (553 sq.ft.) approx.

1ST FLOOR
43.0 sq.m. (462 sq.ft.) approx.



TOTAL FLOOR AREA: 94.4 sq.m. (1016 sq.ft.) approx.
Whilst every attempt has been made to ensure the accuracy of the description contained herein, measurements of doors, windows, rooms and any other items are approximate and no responsibility is taken for any error, omission or mis-statement. This plan is for illustrative purposes only and should be used as such by any prospective purchaser. The services, systems and appliances shown have not been tested and no guarantee as to their operability or efficiency can be given.
Made with Metropex ©2026