

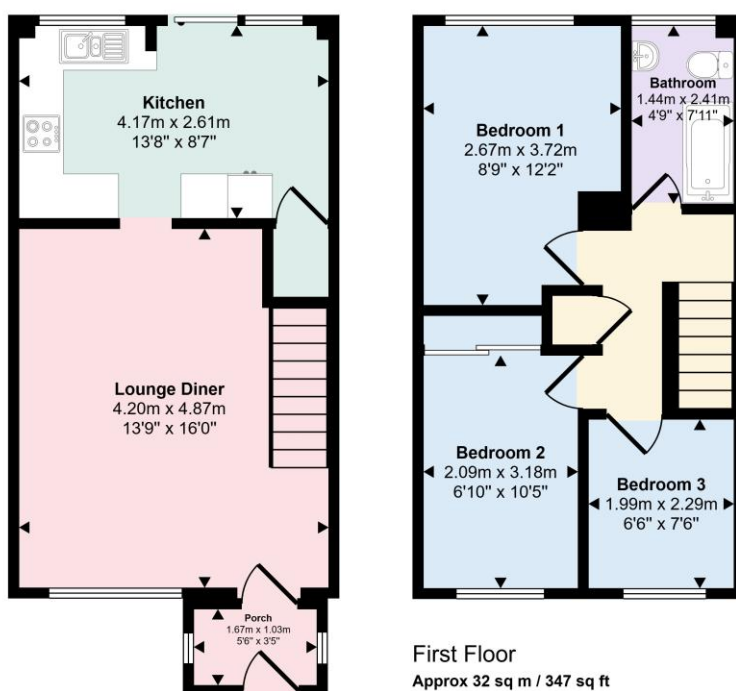
Verney Road |
Price £1,350 pcm



Well presented first floor duplex flat within walking distance of town centre. Open plan lounge/dining/kitchen area, three double bedrooms, master with en-suite shower and built in wardrobes, bathroom with shower over bath. Communal gardens. Double glazed throughout. Allocated off road parking for two vehicles.

- Sought After Location
- Duplex Apartment
- Open Plan Living
- 3 Double Bedrooms
- Gated Access
- Intercom Entry System
- Off Road allocated parking
- Walking Distance to Town Centre
-

Approx Gross Internal Area
66 sq m / 715 sq ft



First Floor
Approx 32 sq m / 347 sq ft

Ground Floor
Approx 34 sq m / 367 sq ft

This floorplan is only for illustrative purposes and is not to scale. Measurements of rooms, doors, windows, and any items are approximate and no responsibility is taken for any error, omission or mis-statement. Icons of items such as bathroom suites are representations only and may not look like the real items. Made with Made Snappy 360.