

EDEN MIDCALF
— SALES & LETTINGS —

£395,000
Church View Gardens

Stourbridge, DY7 6EE

PROPERTY SUMMARY

A well-maintained two-bedroom detached bungalow, situated within the sought-after cul-de-sac of Church View Gardens in Kinver. Offering a generous block paved driveway, garage and an attractively landscaped rear garden, this delightful home provides well-proportioned accommodation ideal for a range of buyers. Available with no upward chain! EPC=D

2

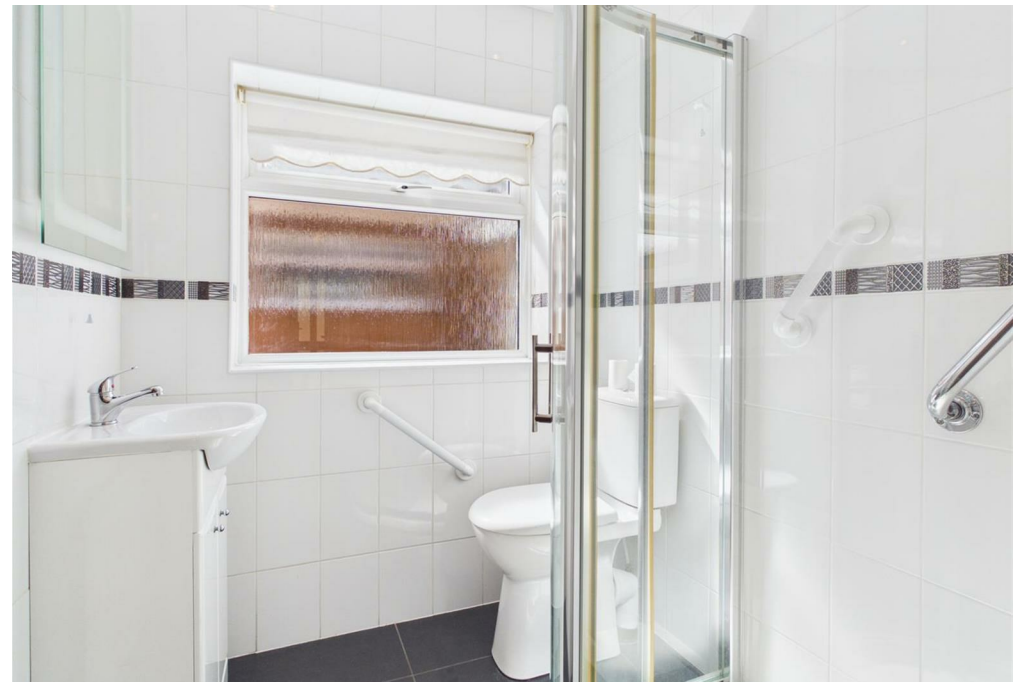


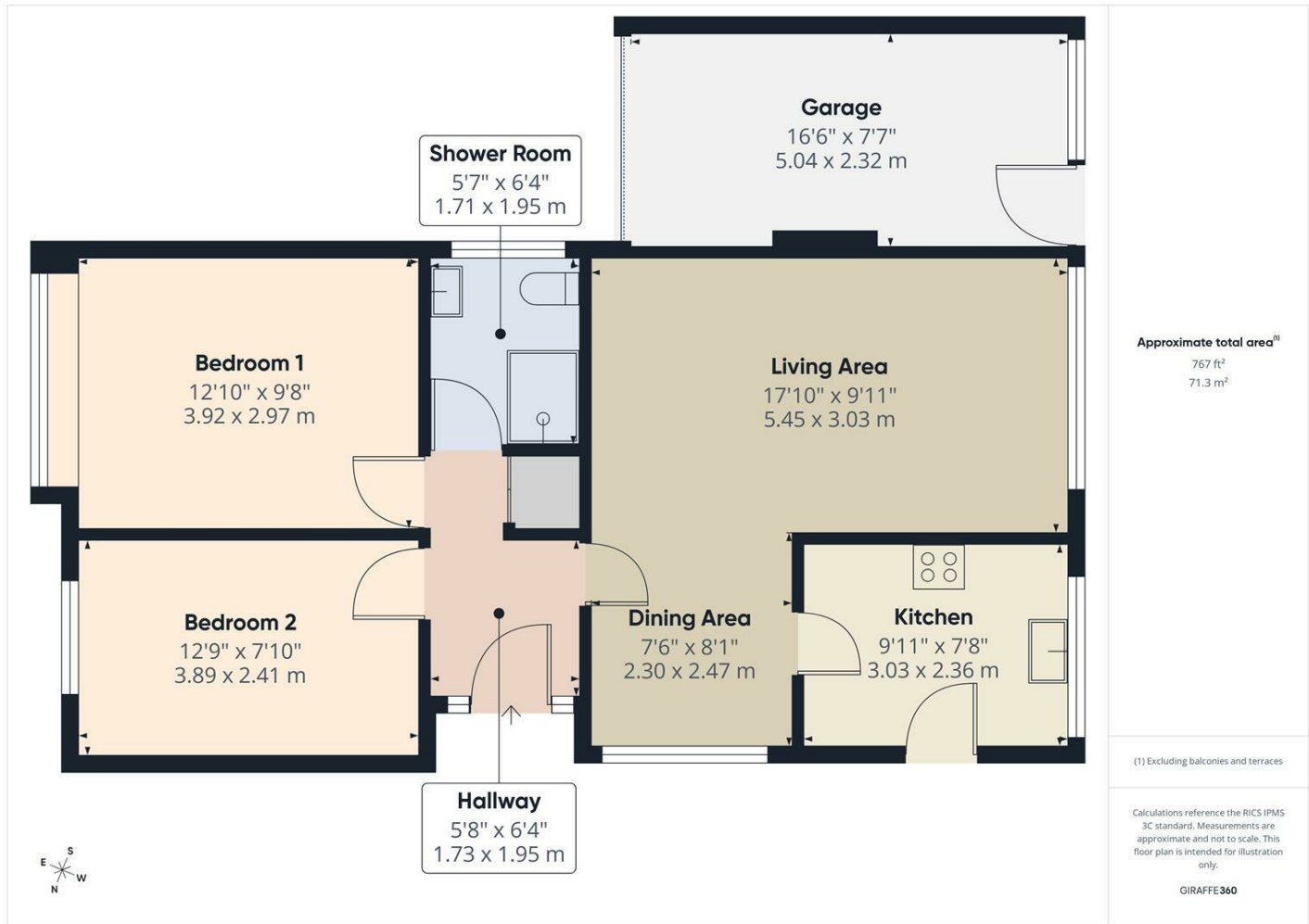
1



1





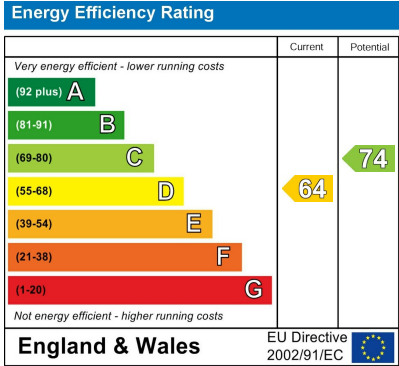


LOCAL AUTHORITY

TENURE
Freehold

COUNCIL TAX BAND
D

VIEWINGS
By prior appointment only



Agents Note: Whilst every care has been taken to prepare these particulars, they are for guidance purposes only. All measurements are approximate and are for general guidance purposes only and whilst every care has been taken to ensure their accuracy, they should not be relied upon and potential buyers/tenants are advised to recheck the measurements.

<p>EDEN MIDCALF SALES & LETTINGS</p>	<p>28 High Street Kinver DY7 6HF</p>	<p>01384 878000 https://www.edenmidcalf.co.uk/ us/</p>
---	--	---