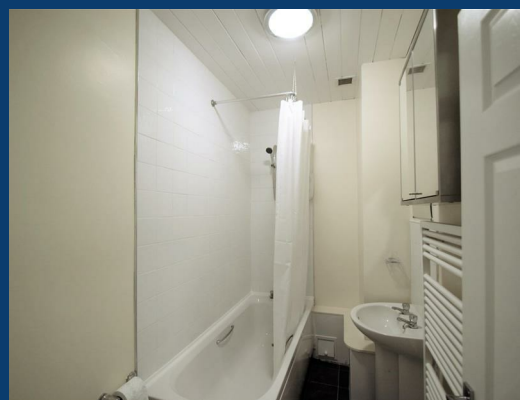




# Lowfield Road

## Stockport



£725 Per month



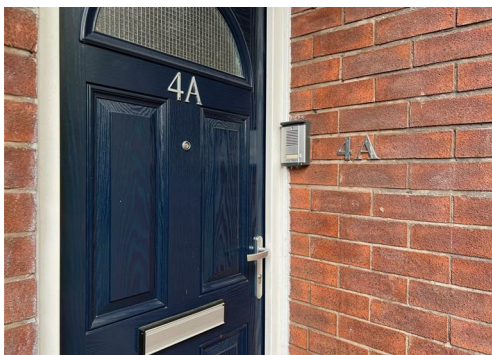
SEND US A  
MESSAGE



SPENCER  
HARVEY

PASSIONATE ABOUT PROPERTY





Energy Efficiency Rating		
	Current	Potential
Very energy efficient - lower running costs		
(92 plus) A		
(81-91) B		
(69-80) C	72	77
(55-68) D		
(39-54) E		
(21-38) F		
(1-20) G		
Not energy efficient - higher running costs		
England & Wales	EU Directive 2002/91/EC	

# PROPERTY DESCRIPTION

\*\*\* ONE BED FLAT AVAILABLE END OF FEBRUARY \*\*\*

\*\*UNFURNISHED - WASHING MACHINE AND FRIDGE INCLUDED \*\*

This one bedroom flat is ideally situated in the heart of Stockport , offering convenient access to the M60, A6, Stockport Train Station, Portwood Retail Park, and Merseyway Shopping Centre.

Upon entering, you are welcomed by a small entrance hallway providing access to the bedroom, a three-piece bathroom, and an open-plan living space with a fully fitted kitchen. The living area is bright and airy, enhanced by a lovely bay-fronted window.

Externally, the property benefits from an off-road parking space to the rear.

EPC rating C. Council Tax Band A.

## KEY FEATURES

- EPC C
- Council Tax A
- Great for commuters
- Close to city centre
- Off road parking
- One bedroom
- Bay fronted
- Part-Furnished
- Popular location

**LET AVAILABLE DATE:**

28th February 2026

**DEPOSIT:£836**

**MIN TENANCY:** Add Text

**LET TYPE:** Add Text

**FURNISH TYPE:** Part furnished

**EPC RATING:**  
C

**COUNCIL TAX**  
**BAND:**  
A

