



## HOTSPUR STREET, SE11

£599,950

Private roof terrace  
Stunning views  
No onward chain  
Excellent condition  
Concierge service  
Central location

@marshandparsons  
marshandparsons.co.uk

MARSH &  
PARSONS



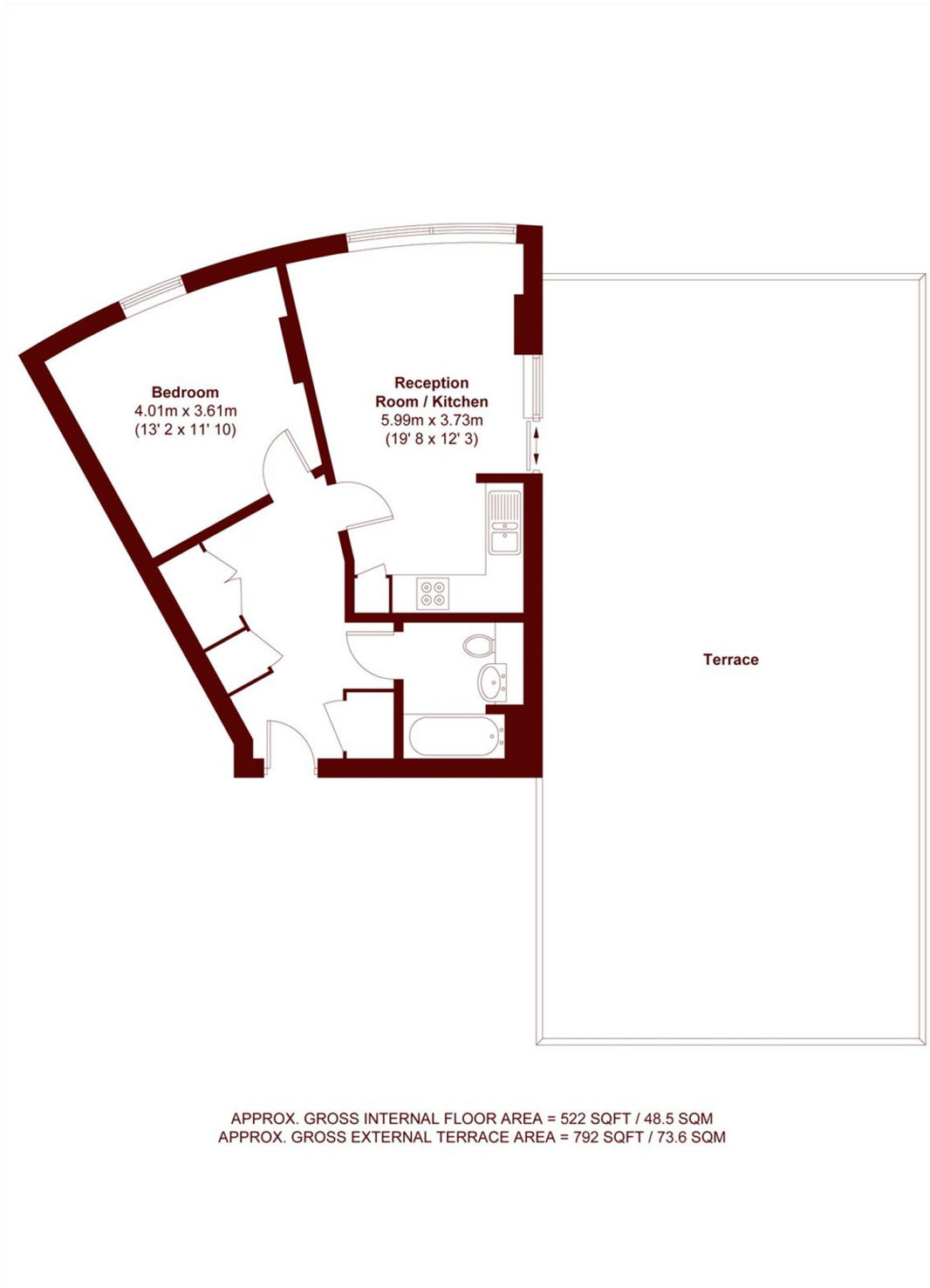
# ABOUT THE PROPERTY

A stunning dual aspect one bedroom apartment with large private terrace in the heart of Kennington. With breathtaking views across London, the property offers a fantastic sense of light and space, with the living and dining areas cleverly arranged to maximize natural light and access to the expansive roof terrace.

The building is ideally located close to both Kennington station (Northern line) and Vauxhall station (Victoria line and Overground), with easy access to the independent shops, cafés, and restaurants of Kennington Cross. Nearby green spaces such as Kennington Park and scenic Thames riverside walks provide the perfect escape from city life.



# STEP INSIDE HOTSPUR STREET



**Kennington**  
020 7587 1533

Energy Rating: C We aim to make our particulars both accurate and reliable. However, they are not guaranteed; nor do they form part of an offer or contract. If you require clarification on any points then please contact us, especially if you're traveling some distance to view. Please note that appliances and heating systems have not been tested and therefore no warranties can be given as to their good working order

**MARSH &  
PARSONS**