



Flat 6, Plume Flats, 8 Dogpole, Shrewsbury, SY1 1EN
£495 Per Month



Flat 6, Plume Flats, 8 Dogpole, Shrewsbury, SY1 1EN

£495 Per Month

VIRTUAL TOUR AVAILABLE - Modernised third floor studio apartment in the heart of Shrewsbury town centre with attractive views from the living room.

Available: 11/09/2026

Description

Comprising: Communal entrance, Stairs to third floor, entrance lobby, living / bedroom, new kitchen including oven & electric hob, bathroom including shower attachment. Electric heating.
EPC E

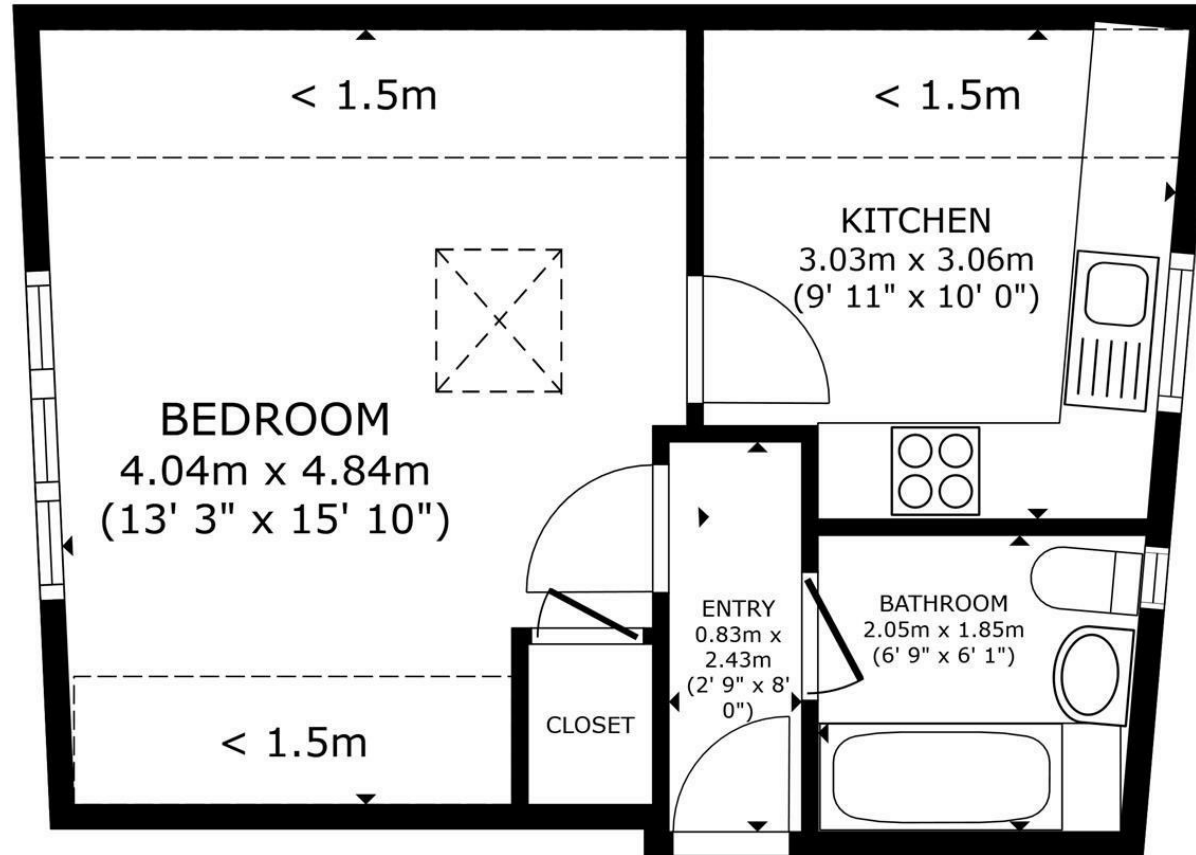
Unfurnished

Council Tax Band: A

Available: 11th September 2026

EPC: E

Floor Plans



FLOOR PLAN

FLOOR PLAN 25.8 m² (278 sq.ft.)
EXCLUDED AREAS : REDUCED HEADROOM 7.9 m² (85 sq.ft.)
TOTAL : 25.8 m² (278 sq.ft.)
SIZES AND DIMENSIONS ARE APPROXIMATE, ACTUAL MAY VARY.



These particulars, whilst believed to be accurate are set out as a general outline only for guidance and do not constitute any part of an offer or contract. Intending purchasers should not rely on them as statements of representation of fact, but must satisfy themselves by inspection or otherwise as to their accuracy. No person in this firm's employment has the authority to make or give any representation or warranty in respect of the property.