



NEW TANNERY WAY, SE1

£3,200 per month

Two bedrooms
Two bathrooms
En suite
Private balcony
Open plan
Modern development

@marshandparsons
marshandparsons.co.uk

MARSH &
PARSONS

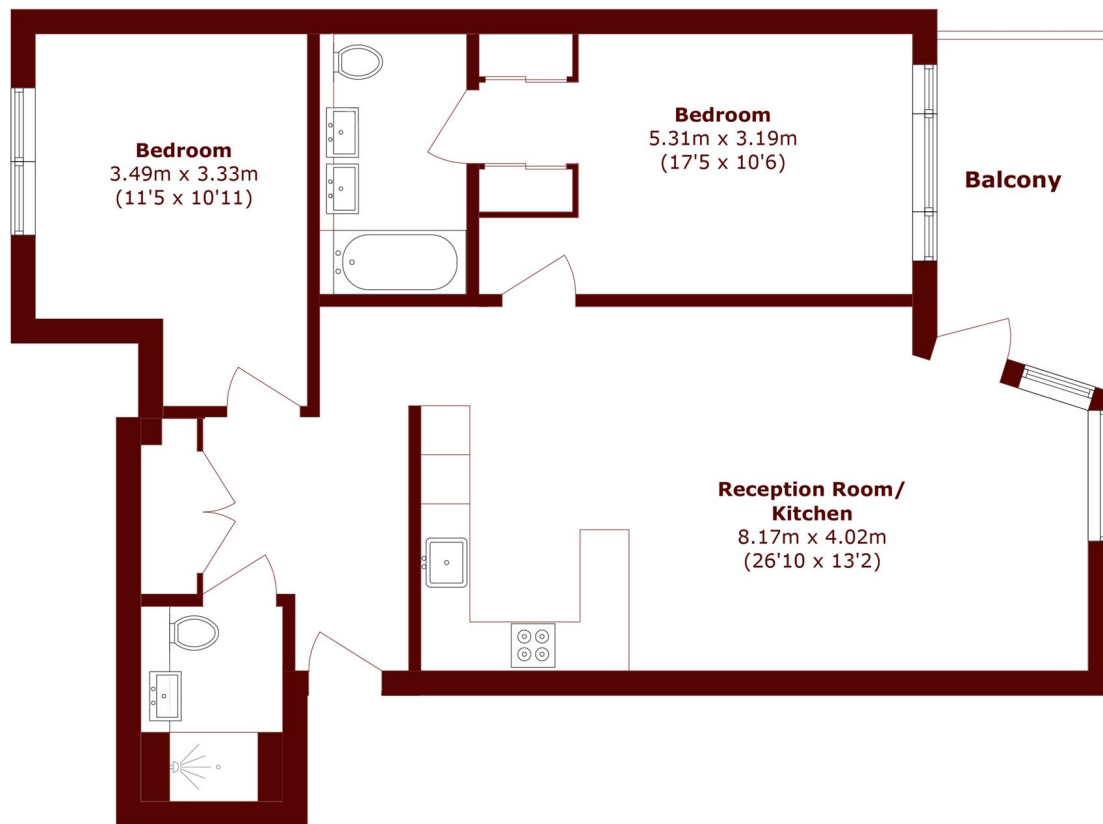


ABOUT THE PROPERTY

A well-presented two bedroom, two bathroom apartment forming part of a modern development on New Tannery Way, Southwark, SE1. The accommodation is generously proportioned throughout, extending to approximately 951 sq ft of internal space, and comprises a particularly impressive open plan reception room and kitchen, two well-proportioned bedrooms and two bathrooms. The principal bedroom benefits from its own en suite, whilst a further family bathroom serves the second bedroom. The property is completed by a private balcony, ideal for outdoor dining and relaxing.



STEP INSIDE NEW TANNERY WAY



Total area (approx.): 88.4 sq. m (951.5 sq. ft)

Balcony area (approx.): 8.1 sq. m (87.1 sq. ft)

Kennington
020 7932 2920

Energy Rating: B We aim to make our particulars both accurate and reliable. However, they are not guaranteed; nor do they form part of an offer or contract. If you require clarification on any points then please contact us, especially if you're traveling some distance to view. Please note that appliances and heating systems have not been tested and therefore no warranties can be given as to their good working order

**MARSH &
PARSONS**