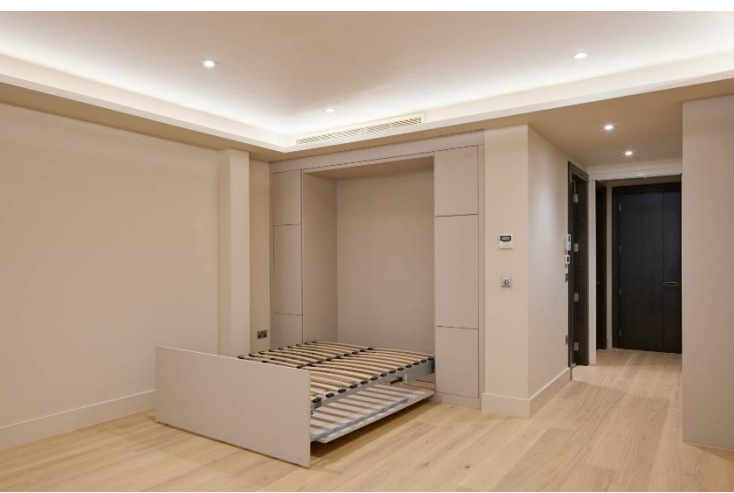




Logan House  
1 Logan Place, W8





Introducing a sleek newly constructed contemporary studio flat, this modern space boasts immaculate finishes and convenient amenities. Situated within a newly constructed residential block on a quiet residential street, this ground floor unit offers

**£2,400 pcm**

Additional tenant charges apply (fees apply to non-AST tenancies only)

Tenancy Agreement Fee: £300

References per Tenant/Guarantor: £60

Inventory check (approx. £100 – £250 inc. VAT)

[chestertons.co.uk/property-to-rent/applicable-fees](http://chestertons.co.uk/property-to-rent/applicable-fees)

Energy Efficiency Rating		Current	Potential
100-109	A		
81-100	B	81	81
69-80	C		
55-68	D		
39-54	E		
21-38	F		
1-20	G		

Not energy efficient - higher running costs

EU Directive 2002/91/EC

England, Scotland & Wales

**Minimum Term:** 6 months

**Deposit Required:** £2,769.23

**Local Authority:** Royal Borough of Kensington & Chelsea

**Council Tax Band:** G

**EPC Rating:** B

**Furnished, Part Furnished, Unfurnished**

**Chestertons Kensington Lettings**

116 Kensington High Street

Kensington

London

W8 7RW

[kensingtonlettingsusers@chestertons.co.uk](mailto:kensingtonlettingsusers@chestertons.co.uk)

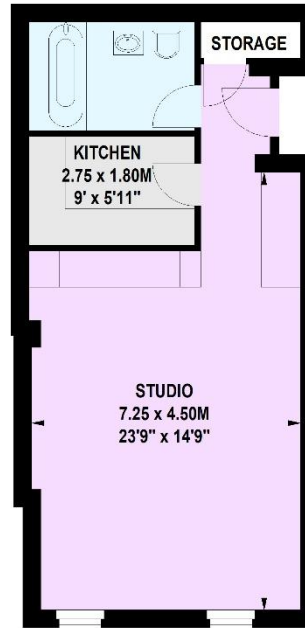
02079377260

# Logan House, Logan Place, W8

Approximate gross internal area

41.99 sq m / 452 sq ft

Key :  
CH - Ceiling Height



Ground Floor

Not to scale, for guidance only and must not be relied upon as a statement of fact.  
All measurements and areas are approximate only

