



31, Hardy Close, New Milton, BH25 5LT

£300,000

Mitchells
1963 — TODAY



*31 Hardy Close
New Milton
Hampshire
BH25 5LT*

A fantastic opportunity to purchase this spacious three/four bedroom town house situated walking distance of New Milton town centre and mainline railway station. The property offers scope for improvement and has no forward chain.

- Entrance Hall
- Ground Floor Shower Room
- Utility Area
- Ground Floor Bedroom Four
- First Floor L-Shaped Lounge/Dining Room
- Kitchen
- Second Floor Bathroom
- Three Bedrooms
- Double Width Driveway
- Private Garden



The Property

Entrance hall with stairs to first floor.

Ground floor shower room with WC and wash hand basin.

Utility area with door to rear garden and garage which has now been partially converted to a ground floor double bedroom.

First floor landing giving access to the L-shaped sitting/dining room which is a particularly spacious room with a large UPVC window to the front and a door through to the kitchen.

The kitchen overlooks the rear garden with solid wood wall and base units and a stainless steel sink with mixer tap over.

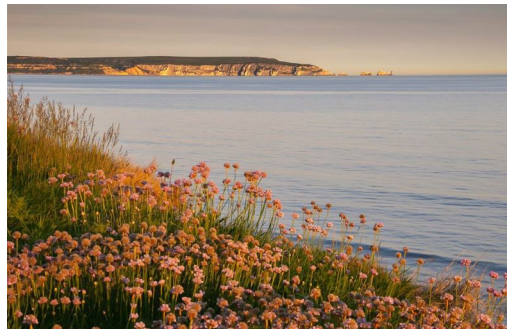
The second floor landing gives access to the three bedrooms and family bathroom.

The family bathroom was refitted approximately six years ago with a jacuzzi style bath with mixer tap over, wash hand basin and fully tiled walls.





New Milton Bowls Club



Gardens & Grounds

To the front of the property is a double width driveway.

To the rear of the property is a lovely sized garden, timber storage shed, high level fencing and rear gate for access.

Services

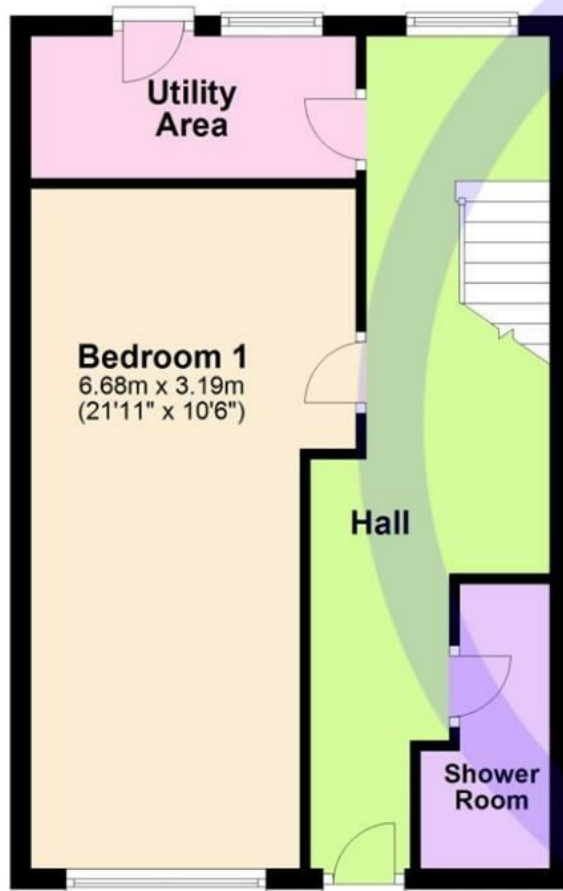
Mains gas, electricity, water and drainage

Council Tax Band: B

Energy Performance Certificate (EPC) Rating: D

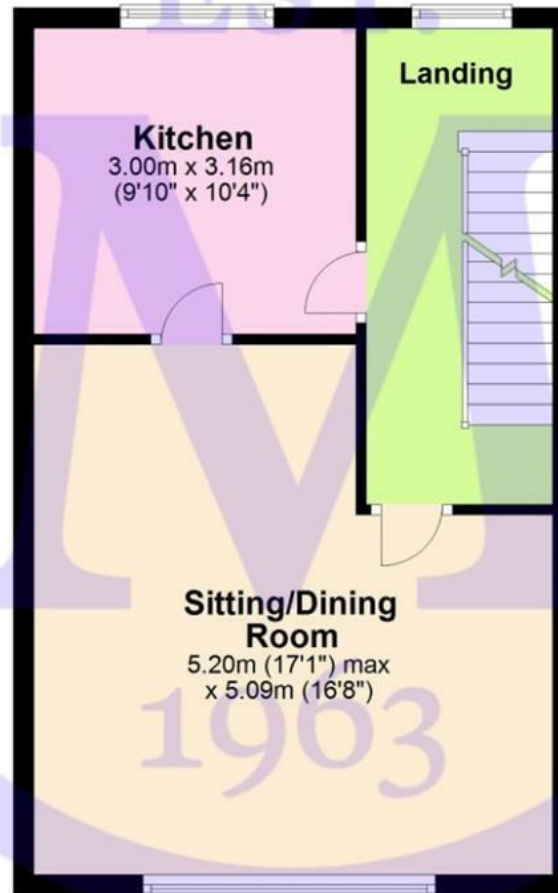
Ground Floor

Approx. 41.6 sq. metres (447.6 sq. feet)



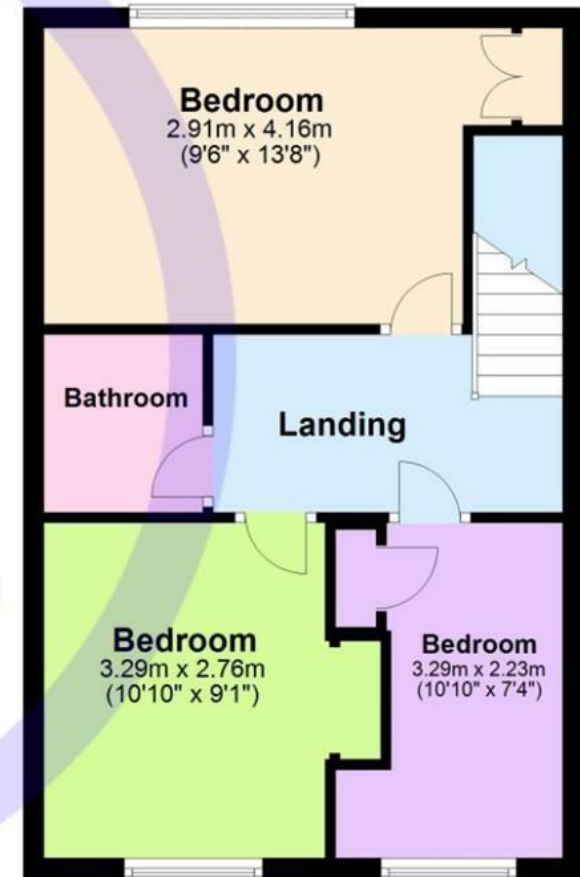
First Floor

Approx. 42.3 sq. metres (455.0 sq. feet)



Second Floor

Approx. 41.6 sq. metres (447.2 sq. feet)



Total area: approx. 125.4 sq. metres (1349.8 sq. feet)

"Whilst every attempt has been made to ensure the accuracy of this floor plan, the measurements of doors, windows, rooms and any other items are approximate and no responsibility is taken for any error, omission or mis-statement. This plan is for illustrative purposes only and should be used as such by any prospective purchaser."

Plan produced using PlanUp.



Situation

Barton on Sea, a charming suburb of New Milton, enjoys a prime location along a picturesque stretch of the Solent coastline. With sweeping views across Christchurch Bay to the Isle of Wight and access to stunning coastal walks in both directions, it's a haven for nature lovers and outdoor enthusiasts. Its popularity is further enhanced by proximity to the open landscapes of the New Forest National Park, direct mainline rail links to London Waterloo, and a range of high-quality amenities. These include excellent schools, fine dining at the renowned Chewton Glen Hotel and Pebble Beach restaurant, and a 27-hole links-style golf course. Offering a perfect blend of natural beauty, convenience, and luxury, Barton on Sea continues to attract those seeking an exceptional coastal lifestyle.



Mitchells.uk.com
info@mitchells.uk.com
01425 616411

Centenary Buildings
8-10 Old Milton Road
New Milton
Hampshire
BH25 6DT

Mitchells
1963 — TODAY

