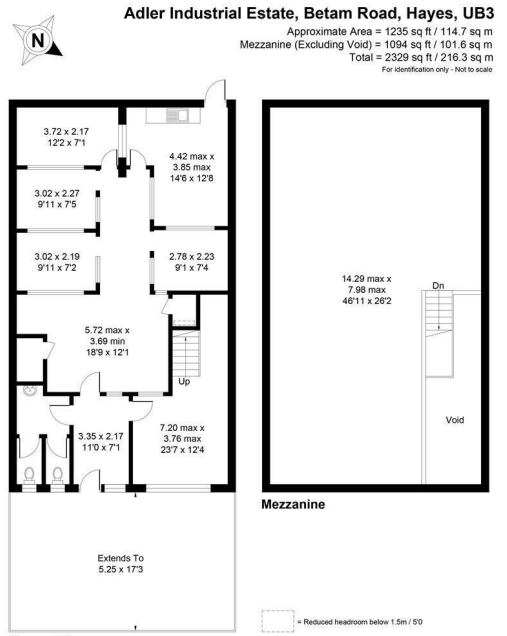




£515,000

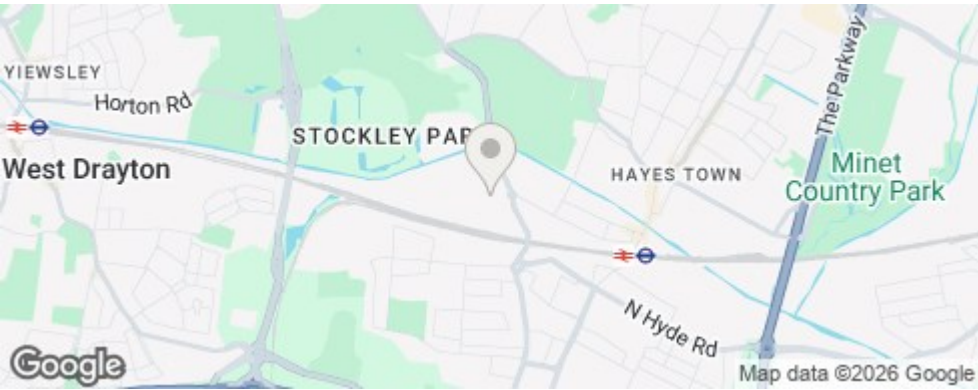
Betam Road

Hayes, UB3 1ST



Floor plan produced in accordance with RICS Property Measurement Standards incorporating International Property Measurement Standards (IPMS2 Residential). ©Vizion Property Marketing 2026. Produced for Allday & Miller.

ALLDAY & MILLER
estate agents



null

2

null



Energy Efficiency Rating

	Current	Potential
Very energy efficient - lower running costs		
(92 plus) A		
(81-91) B		
(69-80) C		
(55-68) D		
(39-54) E		
(21-38) F		
(1-20) G		
Not energy efficient - higher running costs		
England & Wales	EU Directive 2002/91/EC	

Agents Note: Whilst every care has been taken to prepare these particulars, they are for guidance purposes only. All measurements are approximate and are for general guidance purposes only and whilst every care has been taken to ensure their accuracy, they should not be relied upon and potential buyers/tenants are advised to recheck the measurements

Shaw & Co
ESTATE AGENTS

OFFICE ADDRESS
10 Central Parade
New Heston Road
Heston
Middlesex
TW5 0LH

OFFICE DETAILS
02085707258
newhomes@shawandcoestates.co
<https://www.shawandcoestates.com>