

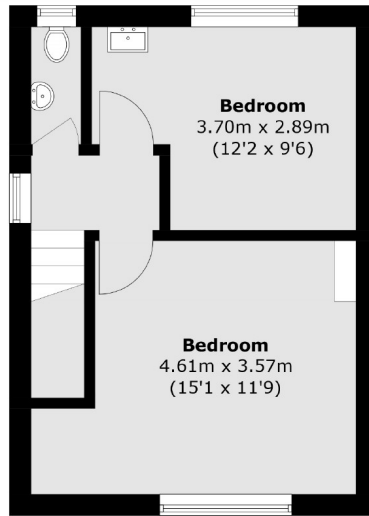


Laurie Road, W7

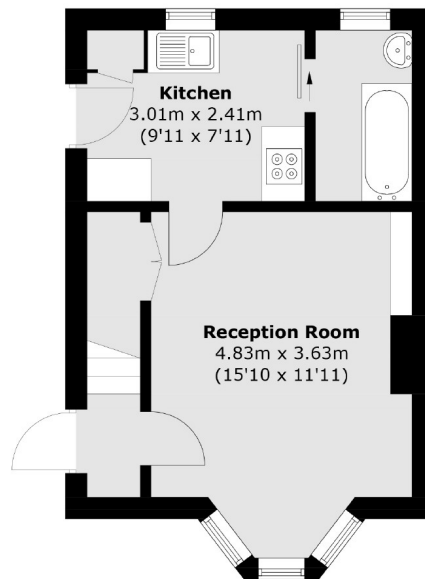
£427 pw (£1,850 pcm)

An end of terrace, two bedroom house located in a popular residential area of Hanwell. The property has entrance hallway, reception room, kitchen, bathroom, separate WC and a landscaped garden.

The property is conveniently located close to Castle Bar Park and Hanwell stations, with easy access to the local amenities on Greenford Avenue.



First Floor



Ground Floor

Total area (approx.): 61.1 sq. m (657.7 sq. ft)

Robertson Smith & Kempson Ealing Lettings
1 The Broadway,
London, W5 2NT
020 8840 7885
ealinglettings@robertsonsmithandkempson.co.uk

Energy Rating: C. We aim to make our particulars both accurate and reliable. However they are not guaranteed; nor do they form part of an offer or contract. If you require clarification on any points then please contact us, especially if you're traveling some distance to view. Please note that appliances and heating systems have not been tested and therefore no warranties can be given as to their good working order.