



Upper Richmond Road West

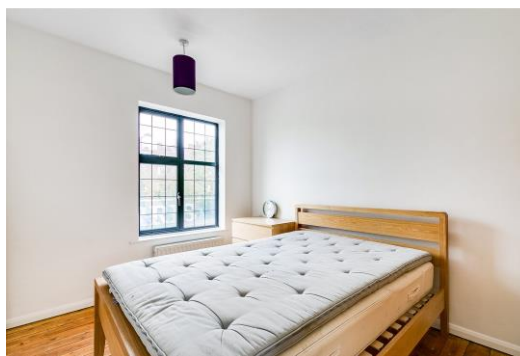
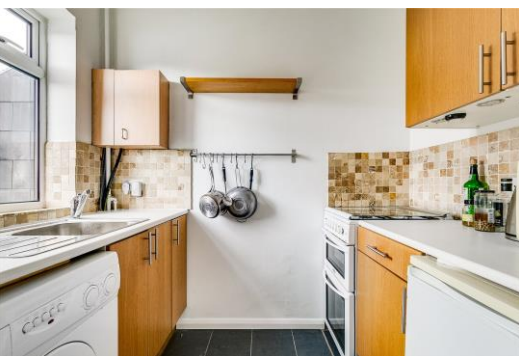
East Sheen, SW14

£1,650 per month
(£380.77 per week)

A bright and well-laid-out two-bedroom flat set on the same level. The property offers a comfortable reception room, a practical kitchen, two double bedrooms and bathroom. Additionally, large windows bring in plenty of natural light.

The property sits in a popular part of East Sheen, close to local shops, cafés and everyday amenities along Upper Richmond Road West. Richmond Park is within easy reach, offering wide open green space for walking, running or cycling. Transport links are convenient, with Mortlake station nearby for direct services into London Waterloo.

CHESTERTONS



Upper Richmond Road West

East Sheen, SW14

- Two Bedrooms
- Communal Roof Terrace
- Wood Floors Throughout
- First Floor



Minimum Term: 12 months
Deposit Required: £1,903.85
Local Authority: London Borough of Richmond upon Thames
Council Tax Band: C
EPC Rating: D
Part Furnished, Unfurnished

Chestertons East Sheen Lettings

254a Upper Richmond Road West
East Sheen
London
SW14 8AG
sheenlettingsusers@chestertons.co.uk
02081040580
chestertons.co.uk

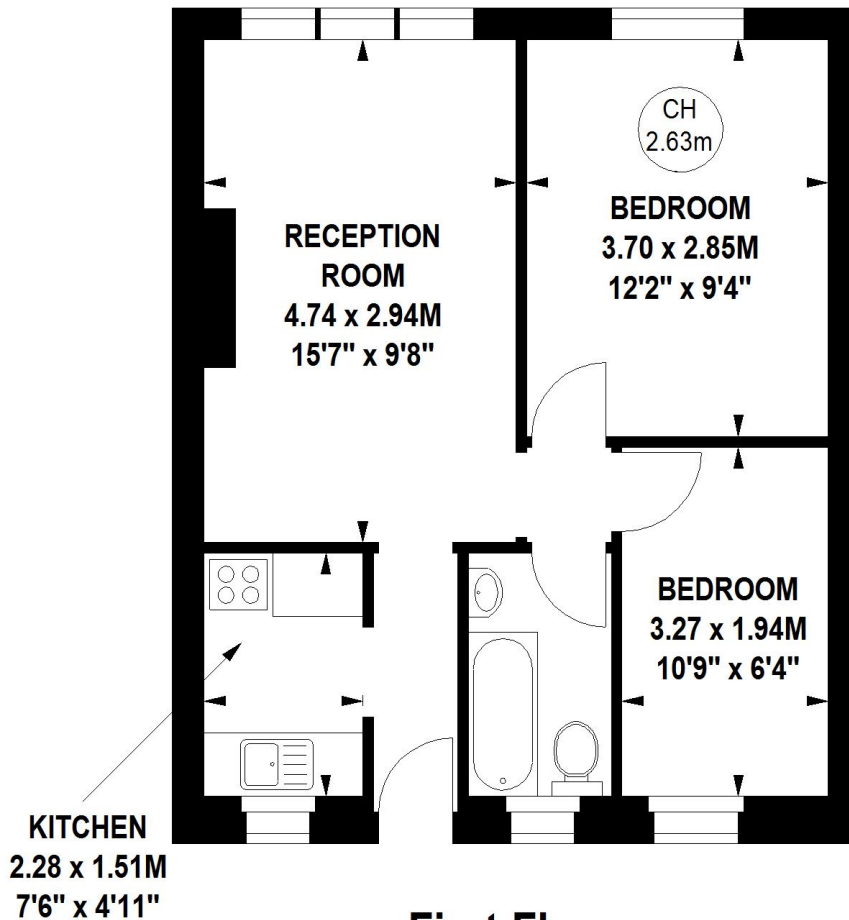
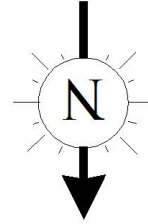
Additional tenant charges apply (fees apply to non-AST tenancies only)
Tenancy Agreement Fee: £300
References per Tenant/Guarantor: £60
Inventory check (approx. £100 – £250 inc. VAT)
[chestertons.co.uk/property-to-rent/applicable-fees](https://www.chestertons.co.uk/property-to-rent/applicable-fees)

Upper Richmond Road, SW14

Approximate gross internal area

42.27 sq m / 455 sq ft

Key :
CH - Ceiling Height



First Floor

The floor plan is not to scale and measurements and areas shown are approximate and therefore should be used for illustrative purposes only. The plan has been prepared in accordance with the RICS code of Measuring Practice and whilst we have confidence in the information produced, it must not be relied on.

If there is any aspect of particular importance, you should carry out or commission your own inspection of the property.

Copyright of FeaturePRO.

