



Church Road, Swainsthorpe, Norwich NR14 8PH

welcome to

Church Road, Swainsthorpe Norwich

Three bedroom detached home set on a generous plot, offering excellent potential and in need of modernisation. Featuring two ensuite bedrooms, a separate shower room, spacious bedrooms, a kitchen with ample storage, dining room and study. A must see property to fully appreciate its potential



Description

Set on a generous plot, this three-bedroom detached home presents a rare opportunity for buyers seeking a property with immense potential. In need of modernisation throughout, this is very much a must-see property for those looking to create a bespoke family home tailored to their own taste and style.

The property boasts three generously sized bedrooms, two of which benefit from private ensuite bathrooms, offering excellent flexibility for family living or visiting guests. A separate shower room further enhances the practicality of the home.

The living space includes a spacious kitchen with ample storage, while an additional study provides an ideal work-from-home space or quiet retreat.

Externally, the property sits on a substantial plot. The outdoor space complements the internal accommodation and adds to the home's long-term appeal.

Lounge

17' 9" x 11' (5.41m x 3.35m)

Wooden flooring with bay window and views of the garden, plenty of natural light and a fire place feature

Dining Room

12' 4" x 11' 4" (3.76m x 3.45m)

Space for a 6 seater dining table

Kitchen

Plenty of worktop space and storage with wall and base level units

Study

11' 8" x 9' 1" (3.56m x 2.77m)

Ideal for working from home or for another bedroom

Shower Room

8' 2" x 6' (2.49m x 1.83m)

Bedroom One

14' 1" x 13' 7" (4.29m x 4.14m)

Double bedroom with carpet space for fixings and fittings

Ensuite

17' 5" x 5' 1" (5.31m x 1.55m)

With bath and over head shower, W.C and sink

Bedroom Two

13' 2" x 9' 3" (4.01m x 2.82m)

Double bedroom with carpet space for fixings and fittings

Ensuite

11' 1" x 5' 7" (3.38m x 1.70m)

Complete with bath and over bath shower, W.C and sink

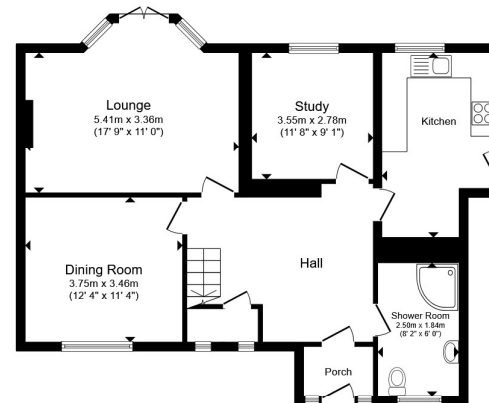
Bedroom Three

13' 2" x 9' 5" (4.01m x 2.87m)

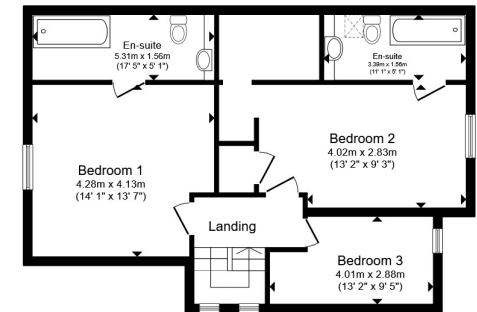
Single bedroom with carpet

Agent Note

Oil Heating system



Ground Floor



First Floor

Total floor area 146.0 m² (1,571 sq.ft.) approx

This floor plan is for illustrative purposes only. It is not drawn to scale. Any measurements, floor areas (including any total floor area), openings and orientation are approximate. No details are guaranteed, they cannot be relied upon for any purpose and they do not form part of any agreement. No liability is taken for any error, omission or misstatement. A party must rely upon its own inspection(s). Powered by www.propertybox.io


william
h brown



view this property online williamhbrown.co.uk/Property/WYM108936



welcome to

Church Road, Swainsthorpe Norwich

- Three-bedroom detached home
- Refurbishment required
- Two en-suite bathrooms
- Study / home office
- Must-see property!

Tenure: Freehold EPC Rating: D
Council Tax Band: E

£475,000



Please note the marker reflects the
postcode not the actual property

view this property online williamhbrown.co.uk/Property/WYM108936



Property Ref:
WYM108936 - 0003

1. MONEY LAUNDERING REGULATIONS Intending purchasers will be asked to produce identification documentation at a later stage and we would ask for your co-operation in order that there is no delay in agreeing the sale. 2. These particulars do not constitute part or all of an offer or contract. 3. The measurements indicated are supplied for guidance only and as such must be considered incorrect. Potential buyers are advised to recheck measurements before committing to any expense. 4. We have not tested any apparatus, equipment, fixtures or services and it is in the buyers interest to check the working condition of any appliances. 5. Where an EPC, or a Home Report (Scotland only) is held for this property, it is available for inspection at the branch by appointment. If you require a printed version of a Home Report, you will need to pay a reasonable production charge reflecting printing and other costs. 6. We are not able to offer an opinion either written or verbal on the content of these reports and this must be obtained from your legal representative. 7. Whilst we take care in preparing these reports, a buyer should ensure that his/her legal representative confirms as soon as possible all matters relating to title including the extent and boundaries of the property and other important matters before exchange of contracts.

William H Brown is a trading name of Sequence (UK) Limited which is registered in England and Wales under company number 4268443, Registered Office is Cumbria House, 16-20 Hockliffe Street, Leighton Buzzard, Bedfordshire, LU7 1GN. VAT Registration Number is 500 2481 05.



william h brown



01953 602578



Wymondham@williamhbrown.co.uk



27 Market Street, WYMONDHAM, Norfolk,
NR18 0AJ



williamhbrown.co.uk