



Cobblestone Square, E1W

£1,500,000

Dexters



Cobblestone Square, E1W

We are pleased to present this three bedroom apartment situated in a highly sought after development neighbouring the Wapping Ornamental Canal. The property boasts a modern specification throughout and floor to ceiling windows allow a plethora of natural light throughout. The generously sized terrace is accessible via the reception and allows for panoramic views of the London skyline. Residents will further benefit from use of a private 24 hour concierge service, landscaped communal gardens, a residents-only private cinema room and lounge area and lastly, a state-of-the-art gym and health spa with a thermo pool, steam room, and sauna.

Exceptional west-facing views across the London skyline, this beautifully presented three-bedroom apartment in the prestigious Park Vista Tower offers an outstanding blend of space, light and luxury. Floor-to-ceiling glazing and a prized west aspect flood the home with natural light throughout the afternoon and evening, creating a spectacular setting from which to enjoy the changing cityscape and sunset views.

Park Vista Tower is located a short walk from Wapping overground station (0.4 miles). The Highway is easily accessible from Cobblestone square, offering links to Canary Wharf and the City of London. Shadwell DLR is also in good proximity (0.4 miles). The local area hosts plenty of amenities such as historic pubs, restaurants, cafes and much more.

Features

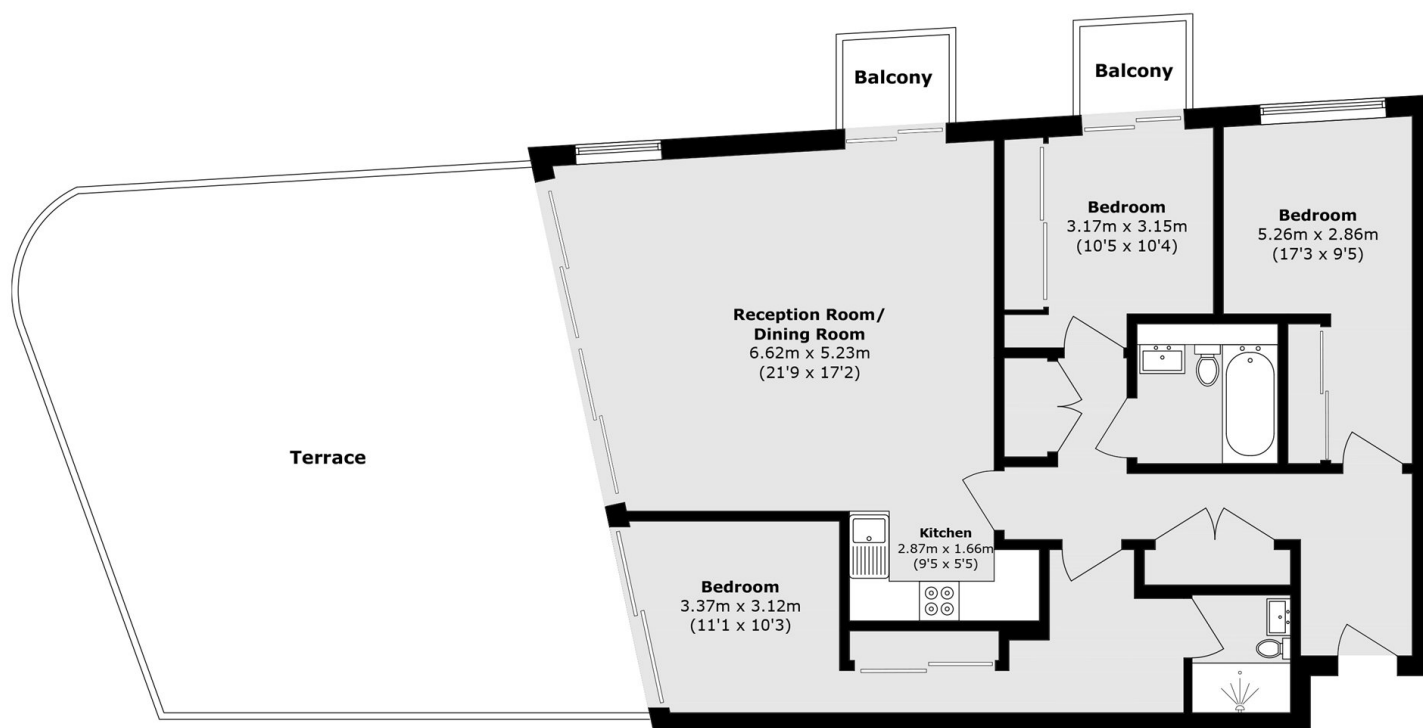
- Allocated parking
- Natural Light Throughout
- 24 Hour Concierge
- Residents Wellness Facilities
- City Views
- Sought After Development







Cobblestone Square, London, E1W



Total Internal area (approx.): 103.5 sq. m (1114.1 sq. ft)
Terrace area (approx.): 62.6 sq. m (673.8 sq. ft)
Balcony area (approx.): 43.1 sq. m (463.9 sq. ft)