



Eardley Crescent, SW5

£3,200 Per calendar month

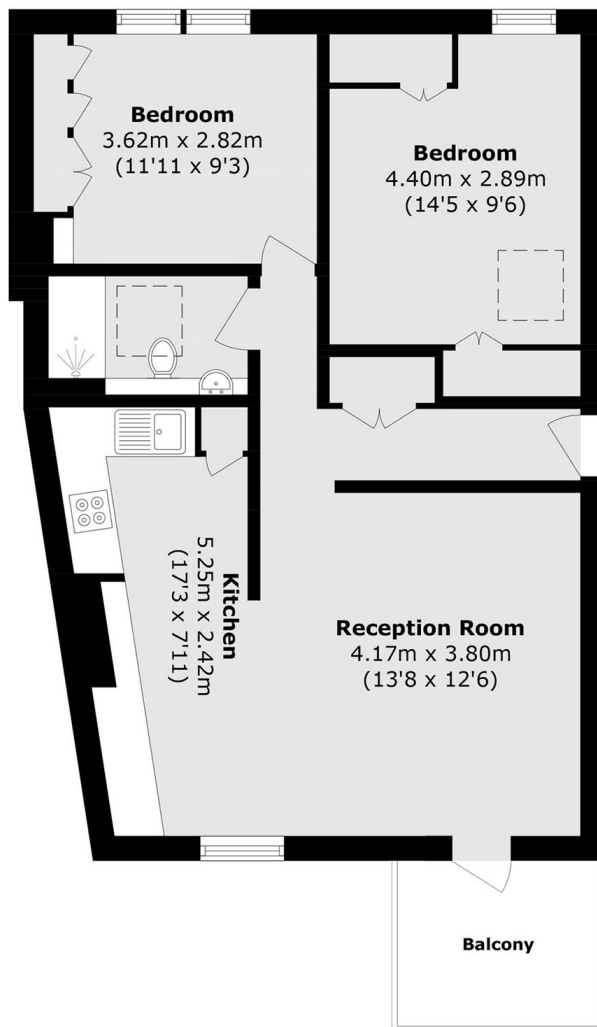
A well presented two double bedroom flat based in a secure period conversion with built-in storage and wooden floors throughout. The property also benefits from a large south facing private terrace.

The flat is located close to the shops and cafes of Earls Court Road including Marks & Spencer Simply Foods, Starbucks coffee shop and a Tesco supermarket.

Features

- Two Bedrooms
- Private Terrace
- Period Conversion
- Open Plan Kitchen
- Wood Floors
- Built-in Storage

Eardley Crescent, London, SW5



Third Floor

Total area (approx.): 61.3 sq. m (659.8 sq. ft)