

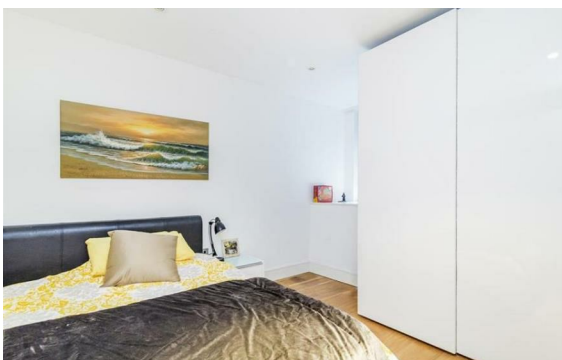


**Lodge Road, St John's Wood, London, NW8**

Rent £1,315 PCM

2 Bed | 2 Bath | 1 Reception

*Please call us on 020 7724 2233 or email us [info@newingtonstates.com](mailto:info@newingtonstates.com) to book a viewing.*



A beautifully refurbished two-bedroom, two-bathroom apartment set within a modern and well-maintained development in the heart of St John's Wood. Finished to an exceptional standard throughout, the property offers luxurious contemporary interiors, featuring a spacious reception room, a sleek fully fitted kitchen with integrated appliances, and two generously sized double bedrooms. The principal bedroom benefits from a stylish en-suite bathroom, while a further modern family bathroom serves the second bedroom and guests.

The apartment further benefits from secure parking, ample storage, and excellent natural light throughout. Residents enjoy the convenience of a modern building in one of North West London's most desirable locations, within easy reach of St John's Wood High Street, Regent's Park, and excellent transport links.

EPC rating: C

## Energy Efficiency Rating: C

Agents Note: Whilst every care has been taken to prepare these particulars, they are for guidance purposes only. All measurements are approximate and are for general guidance purposes only and whilst every care has been taken to ensure their accuracy, they should not be relied upon and potential buyers/tenants are advised to recheck the measurements.

**NEWINGTON**  
— ESTATES —

60 Upper Montagu Street

London

W1H 1SN

020 7724 2233

[info@newingtonstates.com](mailto:info@newingtonstates.com)

<http://www.newingtonstates.com>