



Connells

Greenhaze Lane
Great Cambourne



Blending space and elegance, this impressive detached home features a stunning 25ft refitted kitchen/diner, utility and a remarkable 38ft orangery with log burner. Lounge, study, five bedrooms, separate annex, wraparound garden and gated parking, it offers luxury living for modern family life.

Entrance Hall

Door to side, storage cupboard, fitted mat, tiled flooring, stairs to landing, radiator.

Cloakroom

Wash hand basin, WC, part tiled, tiled flooring, extractor fan, spot lights, radiator.

Refitted Kitchen/Diner

Two windows to rear, fitted kitchen with a range of wall and base units, Quartz work surface and up stands, one and a half inset sink and drainer, tiled splash back, electric oven connection for a Range oven, integrated dishwasher, full height fridge and half size freezer, wine fridge, tiled flooring, island with breakfast bar, television point, double doors to orangery, radiator.

Utility Room

Window to side, wall and base units, luxury laminate work surface with upstands, stainless steel inset sink, plumbing for washing machine, space for drier, tiled flooring, central heating boiler in cupboard, radiator.

Lounge

Window to side, bifold doors to orangery, gas fireplace, spotlights, two radiators.

Study

Window to front, door to annex, radiator.

Orangery

Bifold doors to rear, log burner, air conditioning, electric windows in orangery roof, electric blinds, french door to side, spot lights.

Landing

Window to front and rear, stairs to entrance hall, cupboard housing hot water tank. loft with ladder, light, boarded, shelves, two radiators.

Bedroom One

Two windows to front, three door built in slide wardrobe, spot lights, two radiators.

Refitted Ensuite

Velux windows to rear, walk in shower cubicle, His and Hers vanity wash hand basin, WC, tiled flooring, fitted mirror, fully tiled, extractor fan, spot lights, restricted height, chrome heated towel rail.

Bedroom Two

Window to side, slide door to walk in wardrobe, radiator.

Walk In Wardrobes

Window to side, hanging rail and shelves space, radiator.

Ensuite

Window to rear, shower cubicle, wash hand basin,WC, fully tiled, Chrome shaver point, extractor fan, spots lights, tiled flooring, chrome heated towel rail.

Bedroom Three

Windows to front and rear, two radiators.

Ensuite

Window to rear, shower cubicle, wash hand basin,WC, fully tiled, spot lights, extractor fan, chrome shaver point, tiled flooring, chrome heated towel rail.

Bedroom Four

Window to side, radiator.

Bedroom Five

Window to side, radiator.

Bathroom

Window to rear, bath with mix tap and hand held shower , shower cubicle , wash hand basin, WC, fully tiled, extractor fan, chrome shaver point, spot lights, chrome heated towel rail.

Annex

Kitchen Area

Fitted kitchen with wall and base units, work surface, stainless steel sink, tiled splash back, electric oven, electric hob, space for fridge, plumbing for washing machine, breakfast bar, three door built in wardrobe, door to rear.

Bedroom Area

Two windows to the front and one to the side single wardrobe with mirror door and light, two electric radiators, television point.

Shower Room

Corner shower cubicle, wash hand basin,WC, part tiled, extractor fan, chrome heated towel rail.

Gardens

Front Garden

Pathway to front door, lawn area, planted borders, slate area.

Side Garden

Patio area that the present owners have used to site a hot tub, the hot tub will not be included in the sale, gate to front, private , raised planters , wood store, lights.

Rear Garden

Patio area, lawn, planted borders with tree and shrubs, raised deck area with pergola and lighting, large shed 16'5 X 7'5 max with door to front and rear, light and multiple power points.

Shed

16ft5 x 7ft5 shed, doors to the front leading to driveway and door at the rear to garden, light and power.

Driveway Parking

Gated access to ample driveway parking.

Agent Note

Please as regarding charge

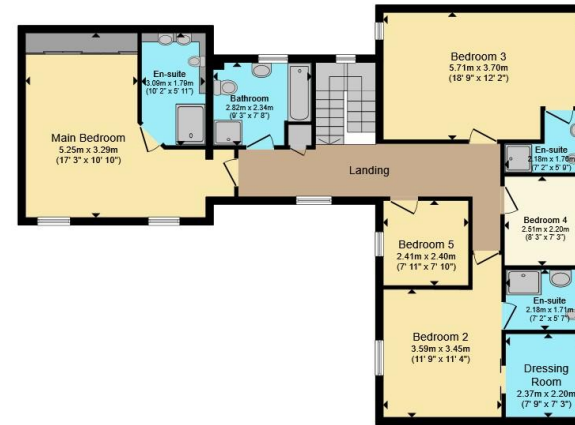








Ground Floor



First Floor

Total floor area 253.6 m² (2,730 sq.ft.) approx

This floor plan is for illustrative purposes only. It is not drawn to scale. Any measurements, floor areas (including any total floor area), openings and orientation are approximate. No details are guaranteed, they cannot be relied upon for any purpose and they do not form part of any agreement. No liability is taken for any error, omission or misstatement. A party must rely upon its own inspection(s). Powered by www.propertybox.io



To view this property please contact Connells on

T 01954 714900
E cambourne@connells.co.uk

Unit 2 Caxton House Broad Street Great Cambourne
 CAMBRIDGE CB23 6JN

EPC Rating: C Council Tax
 Band: F

Tenure: Freehold

view this property online connells.co.uk/Property/CBN306614



1. MONEY LAUNDERING REGULATIONS Intending purchasers will be asked to produce identification documentation at a later stage and we would ask for your co-operation in order that there will be no delay in agreeing the sale. 2. These particulars do not constitute part or all of an offer or contract. 3. The measurements indicated are supplied for guidance only and as such must be considered incorrect. Potential buyers are advised to recheck measurements before committing to any expense. 4. We have not tested any apparatus, equipment, fixtures, fittings or services and it is in the buyers interest to check the working condition of any appliances.

Connells Residential is registered in England and Wales under company number 1489613, Registered Office is Cumbria House, 16-20 Hockliffe Street, Leighton Buzzard, Bedfordshire, LU7 1GN. VAT Registration Number is 500 2481 05.

See all our properties at www.connells.co.uk | www.rightmove.co.uk | www.zoopla.co.uk

Property Ref: CBN306614 - 0006