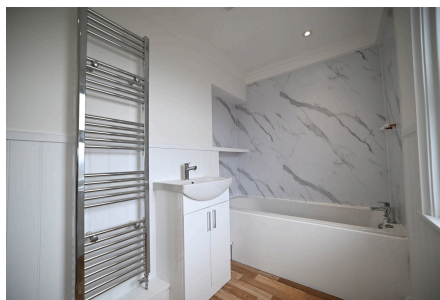


## Jersey Road, Rochester, ME2 3PE

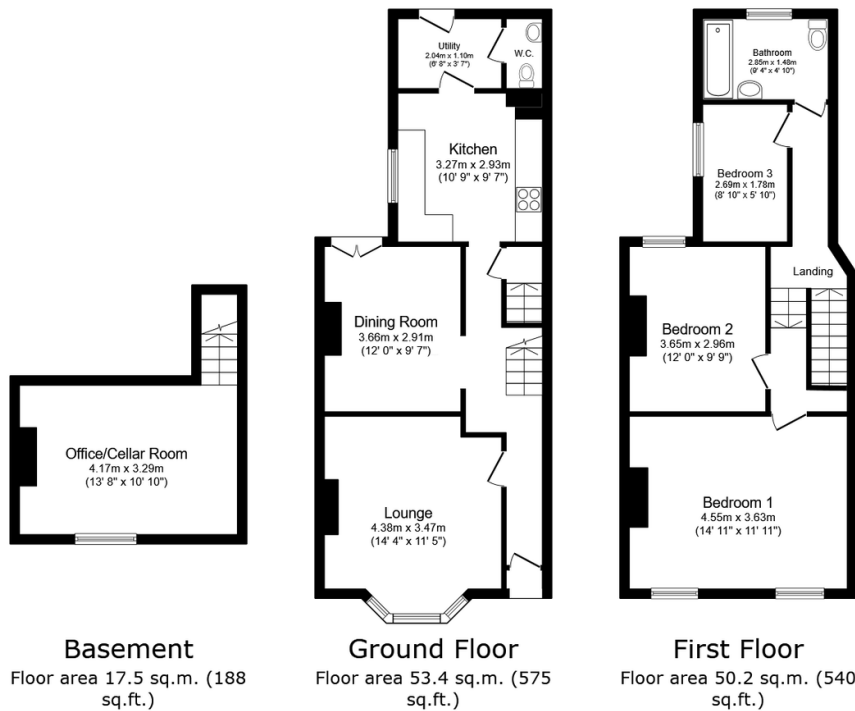
Guide Price £325,000



Guide £325,000-£350,000 Making an ideal first home, is this stunning 3 bedroom example in the sought after Jersey Road. Recently refurbished enjoy the delights of a new kitchen and bathroom where you can simply turn the key and relax from day one. All within a close proximity to schools, shops and a mainline station its sure to be a popular one so don't hang around and call to arrange your viewing today! QUOTE AP0490

### Key Features

- 3 Separate Bedroom Terraced Home
- Recently Refurbished Throughout
- Utility room & Cloakroom
- Office/Cellar Room
- Sought After Location
- Ideal First Time Home
- Walking Distance To Town Centre & Schools
- No Forward Chain
- Tenure Freehold / Council Tax Band C
- QUOTE AP0490



Total floor area: 121.1 sq.m. (1,303 sq.ft.)

This floor plan is for illustrative purposes only. It is not drawn to scale. Any measurements, floor areas (including any total floor area), openings and orientations are approximate. No details are guaranteed, they cannot be relied upon for any purpose and do not form any part of any agreement. No liability is taken for any error, omission or misstatement. A party must rely upon its own inspection(s). Powered by www.Propertybox.io