



the
ANDERSON
Group exp

Lanesbury, Llangennith, Gower, Swansea, SA3 1HU

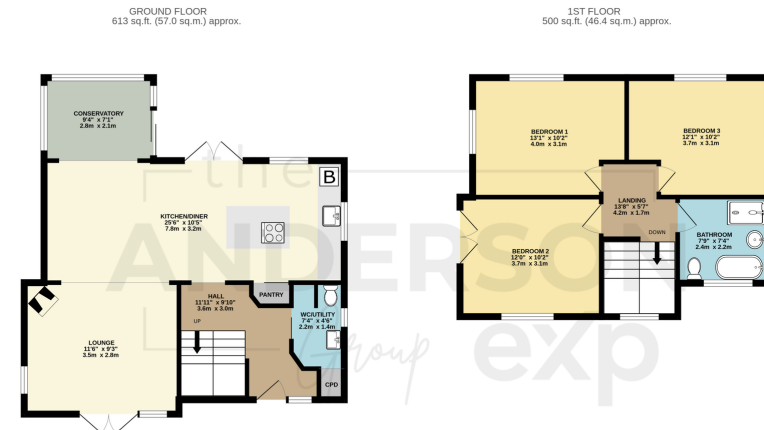
Offers Over £550,000

3 1 2



- Beautifully Presented Detached Family Home
- Open Plan Lounge/Kitchen/ Diner
- Generous Driveway
- Sought-After Gower Village Location
- Tiered Garden with Sea Views & Summer House
- Superb Energy Efficiency with Solar Panels & ASHP
- Incredible Sea and Countryside Views
- Log Burning Stove and Log Stores
- South-Facing Front Terrace
- Please Quote JH001 When Enquiring



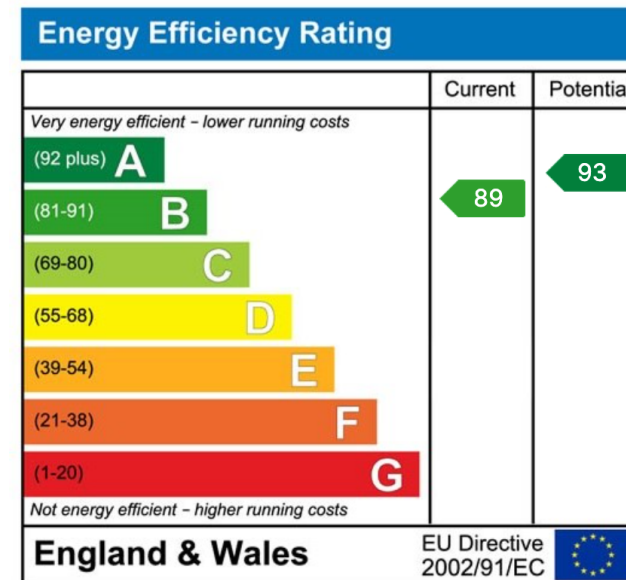


TOTAL FLOOR AREA: 1113 sq.ft. (103.4 sq.m.) approx.

Whilst every attempt has been made to ensure the accuracy of the floorplan contained herein, measurements of doors, windows, rooms and any other items are approximate and no responsibility is taken for any error, omission or mis-statement. This plan is for illustrative purposes only and should be used as such for any prospective purchase. The services, systems and appliances shown have not been tested and no guarantee as to their operability or efficiency can be given.

Made with floorplan 10000

Beautifully presented three-bedroom detached home situated in the highly sought-after Gower village of Llangennith. Accommodation briefly comprises of entrance hall, open plan lounge, generous kitchen/diner, conservatory and WC/utility on the ground floor, with three double bedrooms and a family bathroom on the first floor. The property offers well-proportioned living space, a practical layout and excellent potential for family living or a coastal retreat. Positioned within the Gower Area of Outstanding Natural Beauty, the property is ideally located for access to scenic coastal and countryside walks, local village amenities and the renowned beaches of Rhossili and Llangennith. Viewing is highly recommended. Freehold.



01792 805075

Swansea, Mumbles & Cower

sales@melanieanderson.co.uk