



Lensbury Avenue, SW6

£762 Per week

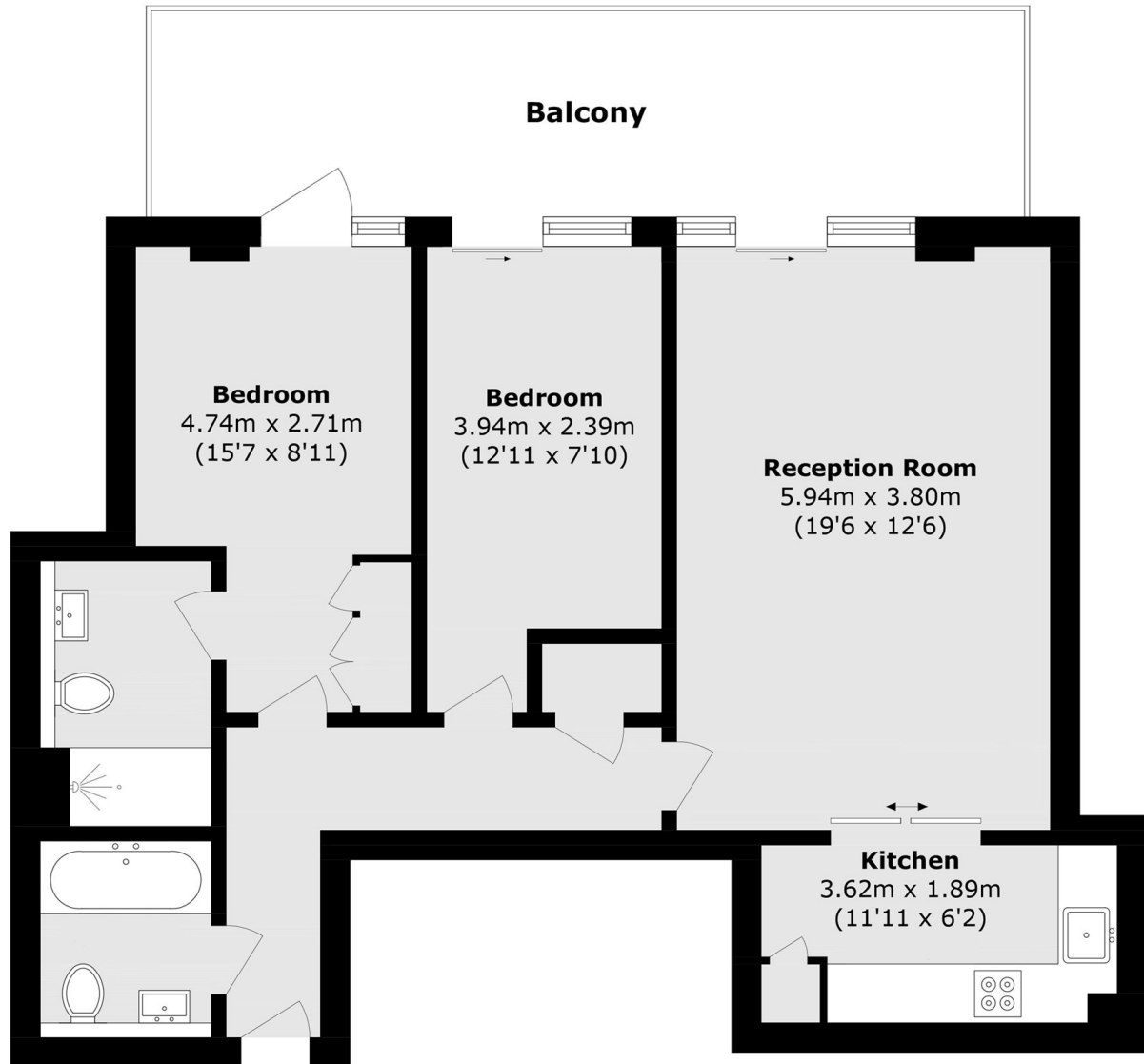
A modern two bedroom, two bathroom apartment located in the heart of the Imperial Wharf development. The property has a large balcony with direct river views

Located next to Chelsea Harbour with shops, bars, restaurants, gym and concierge service. Imperial Wharf overground station is a short walk away and the river bus service provides access to Blackfriars and Putney Piers.

Features

- Two Double Bedrooms
- Two Bathrooms
- Parking Separate
- Large Balcony
- Imperial Wharf
- 24 Concierge

Lensbury Avenue, London, SW6



Total area (approx.): 70.9 sq. m (763.1 sq. ft)
Balcony total (approx.): 19.3 sq. m (207.7 sq. ft)