



Sylvan Glade Forest Drive

Keston Park, Keston, BR2 6EE

Offers In Excess Of £5,750,000



Sylvan Glade is an exceptional contemporary residence situated within the prestigious private estate of Keston Park — one of the UK's most exclusive and secure gated communities. Commissioned by the current owners, James Engel of Spaced Out Architecture designed the property to be a striking example of modern luxury living, thoughtfully conceived to maximise light, openness and connection with its woodland surroundings.

Defined by extensive glazing and sophisticated curtain wall systems, the house embraces an "inside-outside" architectural philosophy, with expansive open-plan interiors oriented to capture natural light and garden views throughout the day. Every element has been carefully considered, resulting in a home of both impressive scale and exceptional functionality.

Sylvan Glade was also the first home in the UK to incorporate Heat Mirror technology on a large scale, designed to significantly reduce heat loss through the glass in winter and help prevent overheating during the summer months.

A lift serves all floors, there is room-by-room controlled underfloor heating throughout, a double garage, and a 3-phase electric supply for rapid EV charging. The property also benefits from a self-contained one-bedroom apartment, with additional potential to create a second on the ground floor, making the home ideally suited for multigenerational living, guest accommodation, or staff quarters.

Sylvan Glade has also gained national recognition, having been featured on Grand Designs in 2011 reflecting both the architectural quality and originality of the design.

Set behind secure gated entrances with 24-hour security patrols and CCTV monitoring, Keston Park is renowned for its privacy and discretion. The estate has been home to notable residents, including Britain's late Prime Minister Margaret Thatcher. Despite its secluded setting, the property is located close to Locksbottom High Street and Orpington station, providing 15 minutes journey to London.



Short Video Introduction

https://youtu.be/DeNfmjN_R6o?si=wzmocJKQ2gLRD4y4

Full Video tour

https://youtu.be/CchtsLvumZE?si=D_6kBqbfogu7BOU

Extended Video tour including Locksbottom fly over

<https://youtu.be/57w6shSBQnE?si=Rg3B7y1vv-YEpQc0>

360 Virtual Tour and Dollhouse

<https://app.immviewer.com/portal/tour/2631995?accessKey=62ba>

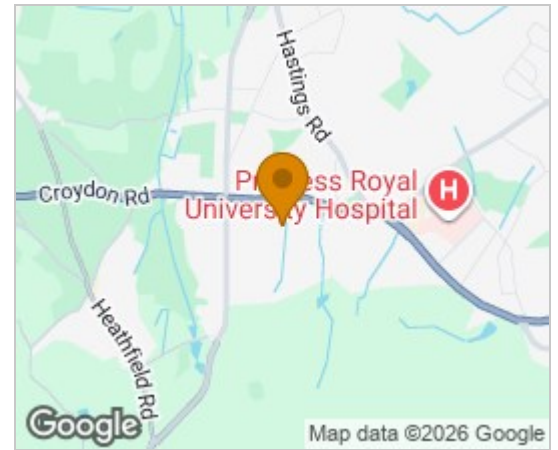
EyeSpy360 Virtual Tour

<https://best360.vr-360-tour.com/e/zoQBnAUim0g/e>

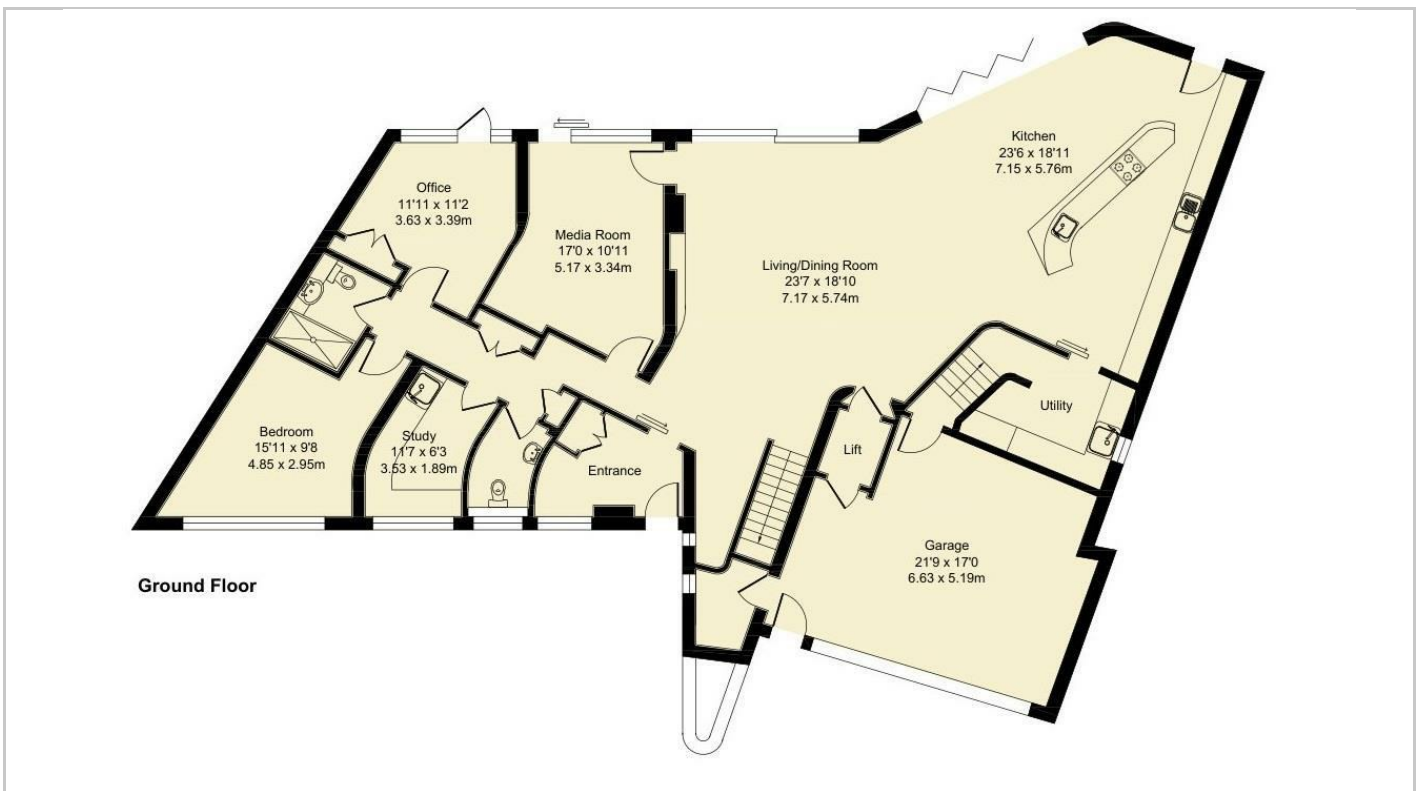
Brochure for Keston Park

<https://online.anyflip.com/iibdr/fsjp/mobile/index.html>

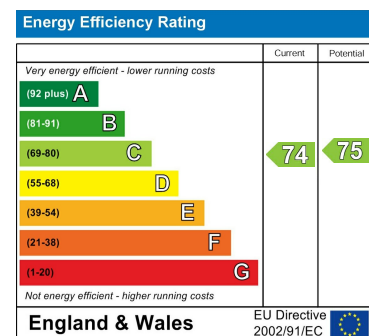
Area Map



Floor Plans



Energy Efficiency Graph



These particulars, whilst believed to be accurate are set out as a general outline only for guidance and do not constitute any part of an offer or contract. Intending purchasers should not rely on them as statements of representation of fact, but must satisfy themselves by inspection or otherwise as to their accuracy. No person in this firm's employment has the authority to make or give any representation or warranty in respect of the property.

2-3 South Parade, School Hill, Merstham, Surrey, RH1 3RA

Tel: 01737 648048 Email: sales@thomasandmay.com <https://www.thomasandmay.com/>