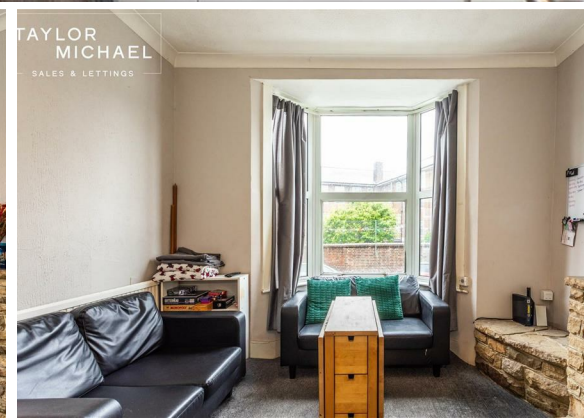




5 Bed
House - Mid
Terrace
located in

£3,034 Per month

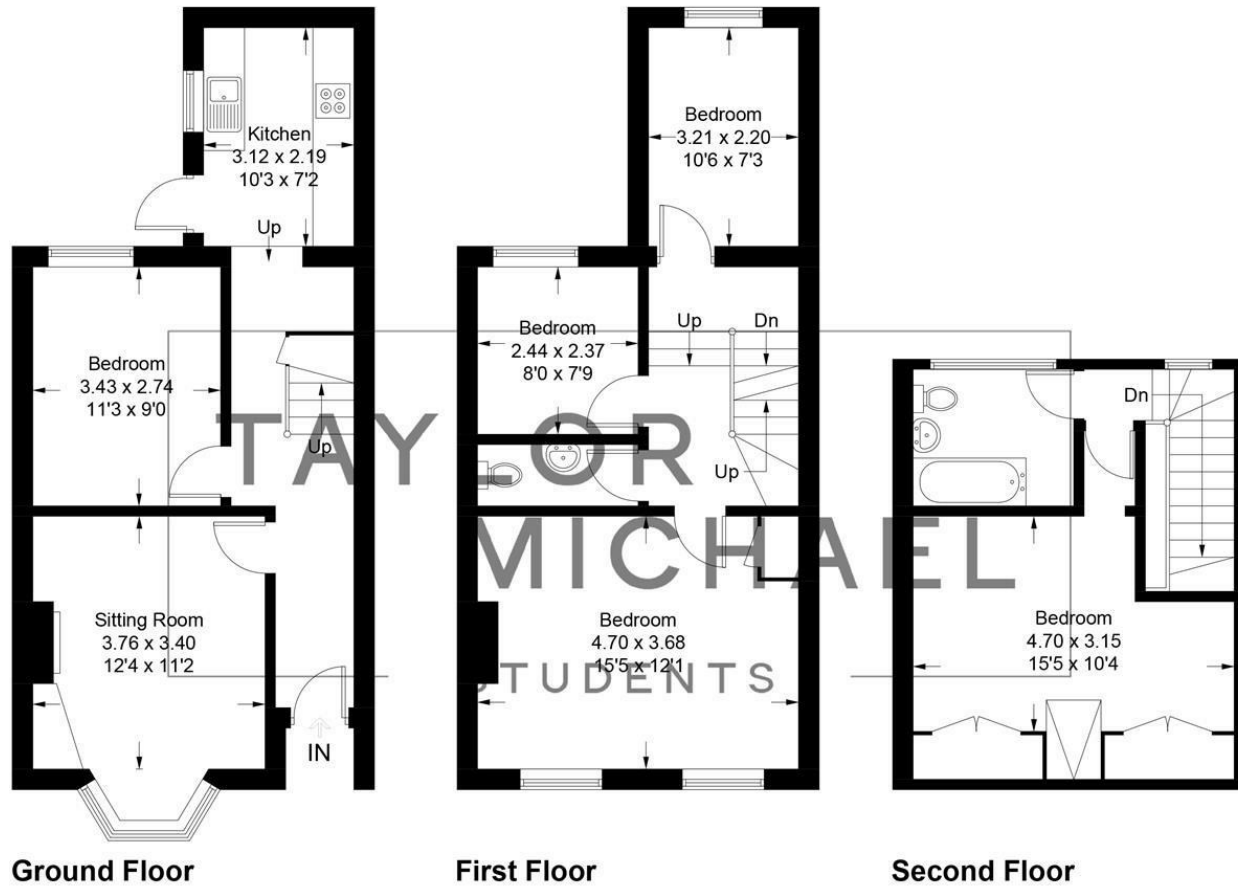


TAYLOR
MICHAEL

STUDENTS

Hastings Road, Brighton, BN2 3AT

Approximate Gross Internal Area = 112.7 sq m / 1213 sq ft



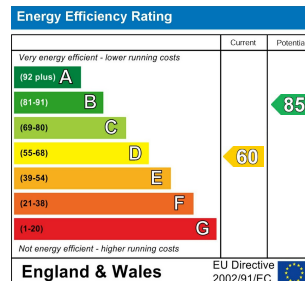
DIRECTIONS

CONTACT

62 Church Road
Hove
East Sussex
BN3 2FP

E: lettings@taylormichael.agency
T:
<https://taylormichael.agency/>

Illustration for identification purposes only, measurements are approximate, not to scale.
Imageplansurveys @ 2026



**TAYLOR
MICHAEL**
STUDENTS