



Convent Gardens, W5

£475,000

An impeccably presented two bedroom split level flat laid out over the two upper floors of this converted house.

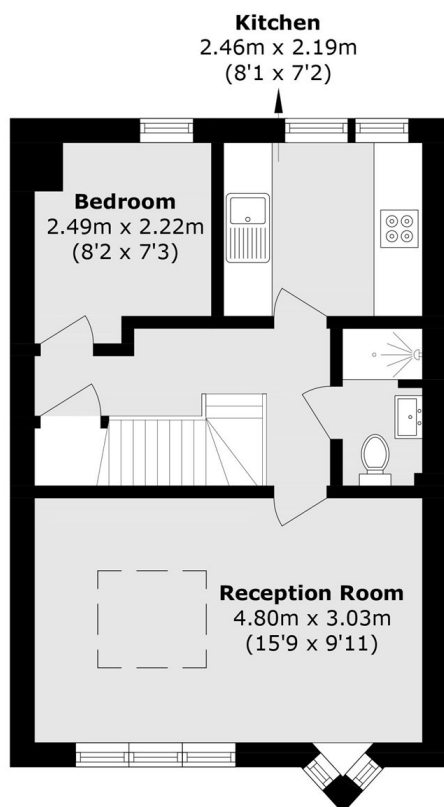
The stylish and modern interior enjoys lots of natural light and also consists of lounge, shower room, kitchen and bathroom.

Set in this quiet Cul- de-Sac just a short walk from Northfields Piccadilly line station and Blondin Park.

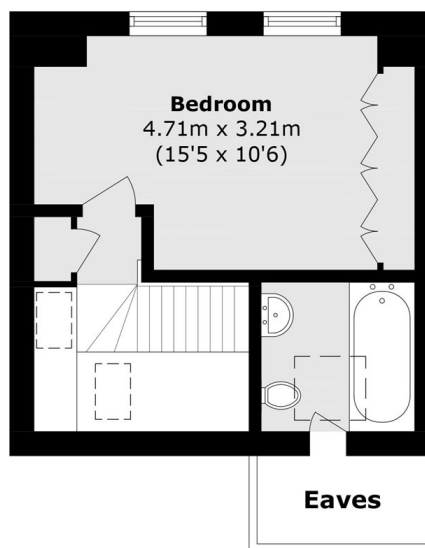
Features

- Split Level Flat
- Two Bedrooms
- Period Conversion
- Excellent Condition
- Close To Tube
- Long Lease

Convent Gardens, London, W5



First Floor



Second Floor

Total area (approx): 58.7 sq. m (631.8 sq. ft)
(Excluding Eaves)