



6 Castle Rise, Kendal
£250,000



6 Castle Rise

Kendal, Kendal

Located in a sought after residential area of Kendal, this three bedroom end terrace property enjoys an elevated position with pleasant open views towards the surrounding countryside. Offering well proportioned accommodation the home is ideally placed for easy access to Kendal town centre, the M6 motorway and the Lake District National Park, making it perfectly suited for both everyday convenience and enjoying the wider South Lakes area.

The ground floor accommodation includes a bright and comfortable lounge positioned to the front of the property, benefitting from a pleasant open outlook and plenty of natural light. The kitchen offers excellent scope for updating and redesign, presenting the opportunity to create a modern family space suited to contemporary living.

To the first floor there are three well proportioned bedrooms, all enjoying attractive outlooks from the upper floor. The bathroom is currently fitted and offers further opportunity for personalisation and improvement. The property provides a fantastic foundation for buyers looking to add value and make a home their own over time.

Externally, the property benefits from gardens to both the front and rear, with excellent potential for landscaping, planting and outdoor seating areas. A driveway to the side provides off-road parking and leads to the garage, offering useful storage, workshop space or additional practicality.

- Three bedroom end terrace home located within a popular residential area of Kendal
- Kitchen offering excellent scope to create a modern family space
- Bright and comfortable lounge with a feature fireplace and pleasant open outlook to the front
- Three well proportioned bedrooms with attractive outlooks towards surrounding countryside
- Bathroom offering opportunity for updating and personalisation
- Gardens to both the front and rear with excellent potential for landscaping
- Driveway parking together with a garage providing useful storage and workshop space
- An ideal opportunity for buyers looking to modernise and add value
- Conveniently positioned for access to Kendal town centre, local amenities and transport links
- Great access to the M6 motorway and the Lake District National Park

Council Tax band: B

Tenure: Freehold

EPC Energy Efficiency Rating: D

EPC Environmental Impact Rating:





LIVING ROOM

15' 7" x 11' 3" (4.75m x 3.43m)

KITCHEN

16' 3" x 6' 9" (4.96m x 2.06m)

HALLWAY

4' 6" x 3' 6" (1.37m x 1.07m)

BATHROOM

6' 4" x 5' 10" (1.94m x 1.79m)

LANDING

6' 5" x 3' 6" (1.95m x 1.07m)

BEDROOM

9' 0" x 7' 10" (2.74m x 2.38m)

BEDROOM

11' 11" x 6' 9" (3.62m x 2.07m)

BEDROOM

8' 2" x 7' 3" (2.50m x 2.20m)

GARAGE

19' 1" x 9' 9" (5.82m x 2.96m)

SERVICES

Mains electric, mains gas, mains water, mains drainage

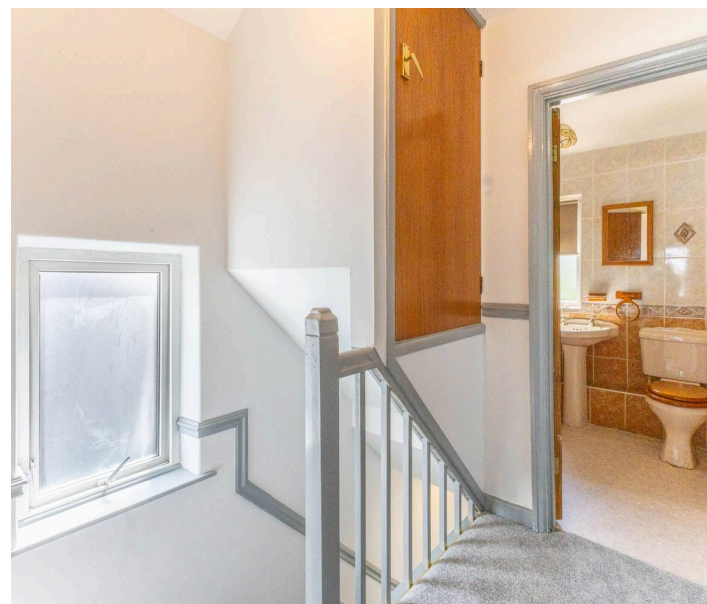
EPC RATING D

COUNCIL TAX BAND currently Band B

TENURE: FREEHOLD

IDENTIFICATION CHECKS

Should a purchaser(s) have an offer accepted on a property marketed by THW Estate Agents they will need to undertake an identification check. This is done to meet our obligation under Anti Money Laundering Regulations (AML) and is a legal requirement. We use a specialist third party service to verify your identity. The cost of these checks is £43.20 inc. VAT per buyer, which is paid in advance, when an offer is agreed and prior to a sales memorandum being issued. This charge is non-refundable.





THW Estate Agents

112 Stricklandgate, Kendal - LA9 4PU

01539 815700 • kendal@thwestateagents.co.uk • www.thwestateagents.co.uk

Please note that descriptions, photographs and plans are for guidance only. Services and appliances have not been tested, measurements are approximate and alterations may not have necessary consents. Contact us for property availability and important details before travelling or viewing properties. THW Estate Agents Ltd is a separate legal entity to the solicitor firm of THW Legal Ltd which has different ownership and clients of THW Estate Agents Ltd do not have the same protection as those of THW Legal Ltd.