

# Apartment 7, £129,000

(Other charges apply)

**RICHMOND  
VILLAGES**

*Part of Bupa*



1



1



EPC - E



## 1 bedroom first floor apartment

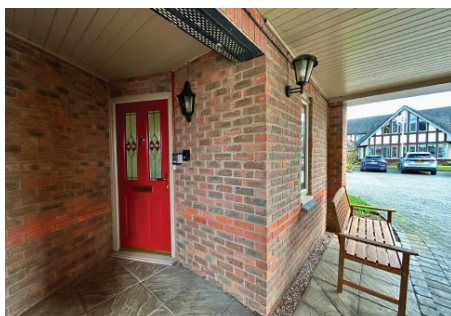
No. 7 Richmond Village is a delightful property set within the turret at the entrance to the picturesque courtyard at Richmond Villages, complete with a convenient stairlift. Ideally located for someone who wishes to remain fully independent while staying close to the main building and its excellent facilities, the home offers both comfort and practicality. Featuring electric storage heating, double glazing, and an attractive feature fireplace, it provides a warm, welcoming, and cosy living environment.

### Specification

- The bright lounge featuring wall-width windows at either end affording East views to reception and west views across the courtyard gardens. There is a feature fireplace with electric fire, storage cupboard and an ideal spot for a cosy table to sit whilst dining and watching the world go by.
- A modern fitted kitchen with wall and base units and integrated appliances, including fridge, washer-dryer, hob, oven and microwave.
- The double bedroom has a range of built-in wardrobes and cupboards and enjoys Easterly views.
- The modern walk-in shower room offers plenty of bright clean space plus vanity unit, wc, washbasin and heated towel rail.
- Central heating radiators in all rooms. TV and satellite points\*.
- Well stocked flower borders and lawns maintained by the Village Gardeners.
- Allocated parking space for one car.

\*Satellite subscription not included.

Important Notice: These particulars are intended to give a fair and substantially correct overall description. Other fees and charges apply, please contact the Village Advisers for further details.



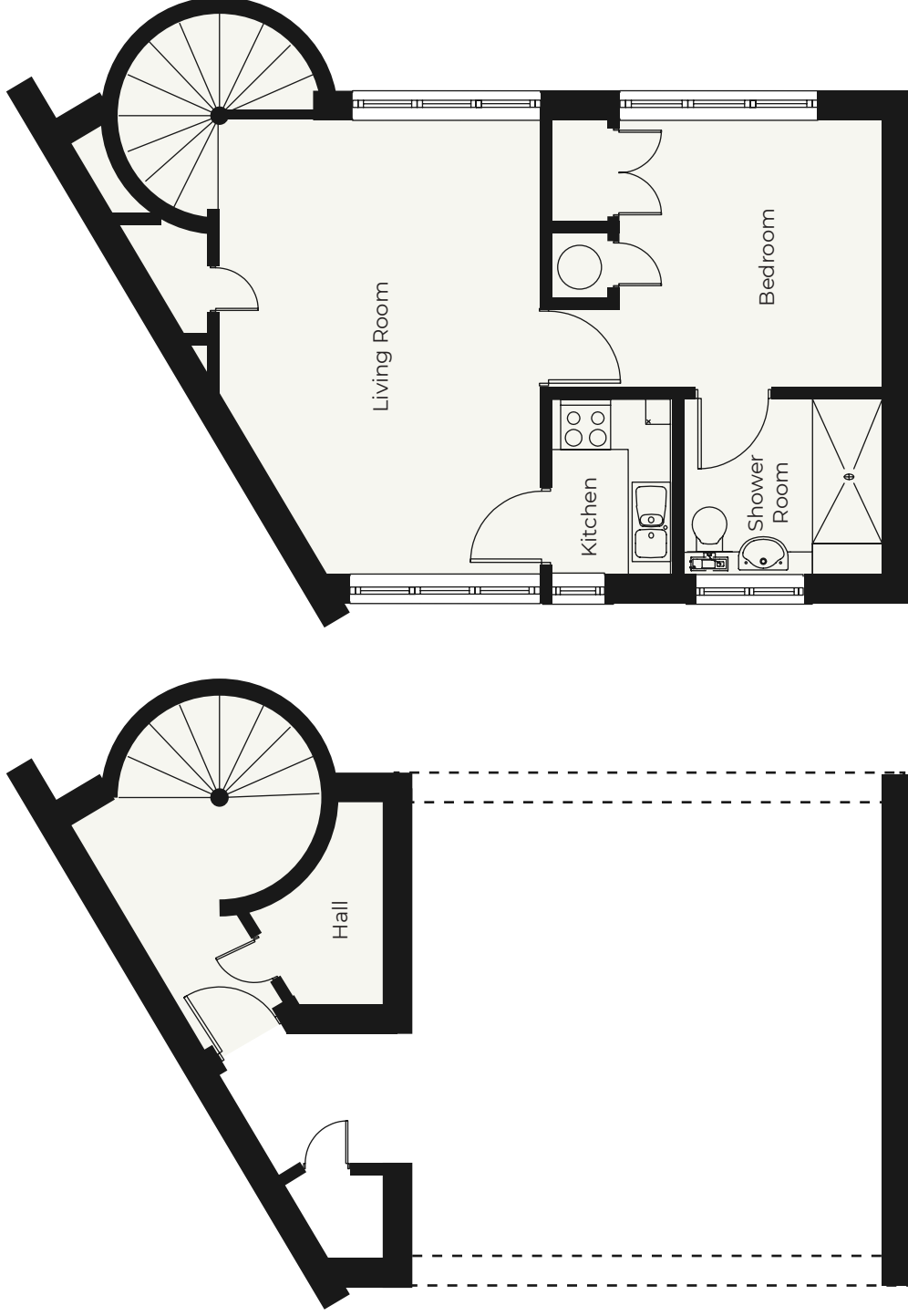
**01270 629 080**

[nantwich@richmond-villages.com](mailto:nantwich@richmond-villages.com)

**Richmond Villages Nantwich,  
St Joseph's Way, Nantwich, Cheshire CW5 6LZ**

# Apartment 7

## First Floor



**Kitchen**

9'6" x 4'6"

**Sitting Room**

16'8" x 11'6"

**Bedroom**

9'11" x 9'6"

**Shower Room**

7'4" x 6'6"

These particulars are intended to give a fair and substantially correct overall description.

Measurements have been taken at 1500mm skimming height.

All dimensions are approximate. Bedroom measurements include the wardrobe if applicable. Room measurements include bay windows if applicable.

Furniture layout is to give an indicative impression. Although all efforts have been made to ensure its accuracy at time of print dimensions, fixtures, fittings, finishes and specifications are subject to change without notice.

The properties are sold unfurnished.

