



📍 33B Market Place, Devizes, Wiltshire, SN10 1JG

🔗 £140,000

A recently decorated 2-bedroom apartment overlooking the bustling Market Place of Devizes. Offered to the market with no onward chain and allocated parking.

- Recently redecorated
- 2-bedrooms
- Reception room with feature fireplace
- Overlooking The Market Place
- In the heart of the town centre
- Allocated parking
- No onward chain
- Building is Grade II Listed

🏠 Leasehold

🏠 EPC Rating D



Overlooking the historic Market Place in the heart of Devizes town centre, this recently decorated two-bedroom flat offers spacious and light accommodation with the added benefits of allocated parking and no onward chain. Perfectly positioned within easy walking distance of the town's shops, cafés, restaurants and amenities, the property would make an ideal first-time purchase, investment or lock-up-and-leave home.

The accommodation is well balanced throughout and comprises a generous reception room featuring a fireplace and a large window to the front enjoying elevated views across the Market Place, creating a bright and characterful living space. The kitchen is fitted with a range of units and benefits from a skylight allowing plenty of natural light to flood in.

There are two bedrooms in total, including a comfortable double bedroom with the added benefit of built-in storage, alongside a further single bedroom which could equally lend itself to a home office, dressing room or occasional guest room. The bathroom is fitted with a shower over the bath and also benefits from useful built in storage.

Rare for such a central location, the property also benefits from allocated parking, further adding to its practicality and appeal.

Situation

Conveniently located in the town, the thriving Market Place has a splendid selection of period and Listed homes. The property itself sits within a very short distance of the Market Place and the renovated Hillworth Park. A historic market town, Devizes has many amenities including town centre shopping, a leisure centre, schools for all ages, various supermarkets, a variety of shops, theatre and thriving weekly market. The historic Kennet & Avon Canal runs through the town providing fishing and walking facilities. The major centres of Bath, Salisbury, Swindon, Marlborough and Chippenham are all within a 30 mile radius.

Property information

Electric room heaters. We are advised mains water, drainage and electricity are connected.

Agents note: The property is Grade II Listed and situated in a conservation area.

Tenure: Leasehold. 125 year lease from 2001. £100 per annum ground rent. £500 per quarter service charge.

EPC rating: D

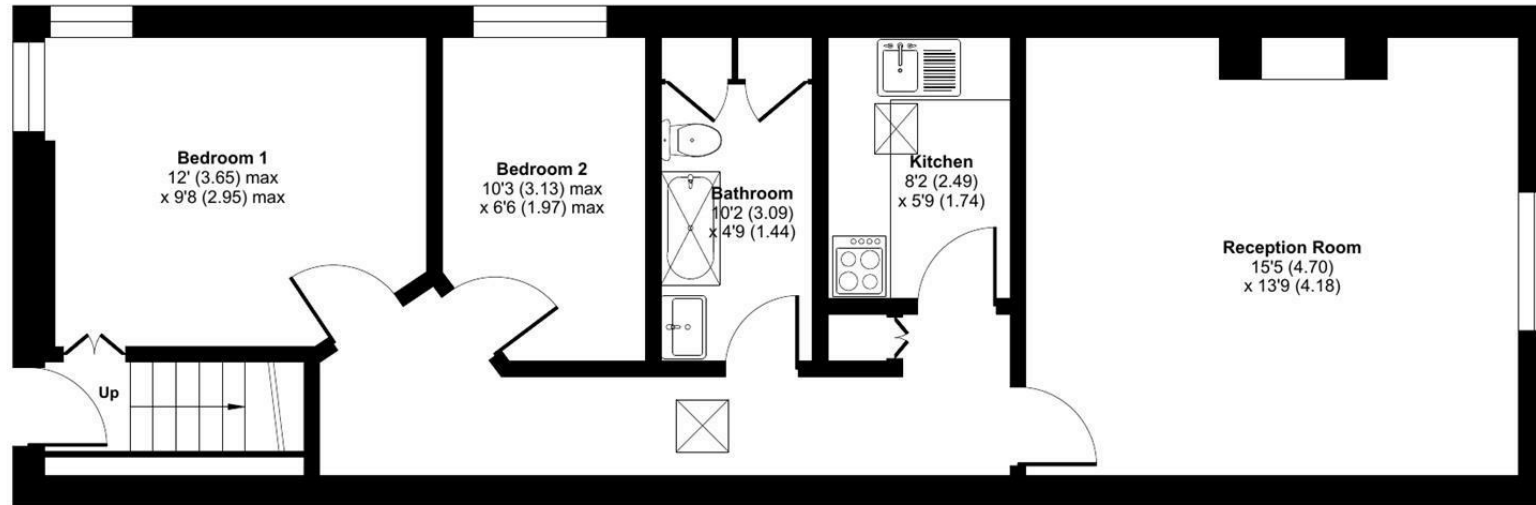
Council tax band: A



Market Place, Devizes, SN1

Approximate Area = 633 sq ft / 58.8 sq m

For identification only - Not to scale



GROUND FLOOR

 Floor plan produced in accordance with RICS Property Measurement 2nd Edition, Incorporating International Property Measurement Standards (IPMS2 Residential). © ncthemcom 2026. Produced for Strakers. REF: 1458851

Disclaimer These particulars, whilst believed to be accurate are set out as a general outline only for guidance and do not constitute any part of an offer or contract. Intending purchasers should not rely on them as statements of representation of fact, but must satisfy themselves by inspection or otherwise as to their accuracy. No person in this firm's employment has the authority to make or give any representation or warranty in respect of the property. All measurements and distances are approximate only. Your home is at risk if you do not keep up repayments on a mortgage or other loan secured on it.