



PORTOBELLO ROAD, W11

£625,000

Two double bedrooms
No onward chain
Two bathrooms
First floor flat
High ceilings
EPC- C

@marshandparsons
marshandparsons.co.uk

MARSH &
PARSONS

ABOUT THE PROPERTY

A well-presented two double bedroom apartment set in a sought-after location, featuring a bright and spacious open-plan reception, kitchen, and dining area ideal for modern living and entertaining.

Portobello Road is one of Notting Hill's most iconic addresses, renowned for its vibrant market, eclectic boutiques, and an excellent selection of cafés, restaurants, and local amenities. The area offers a lively yet charming atmosphere, with a strong sense of community and character throughout.





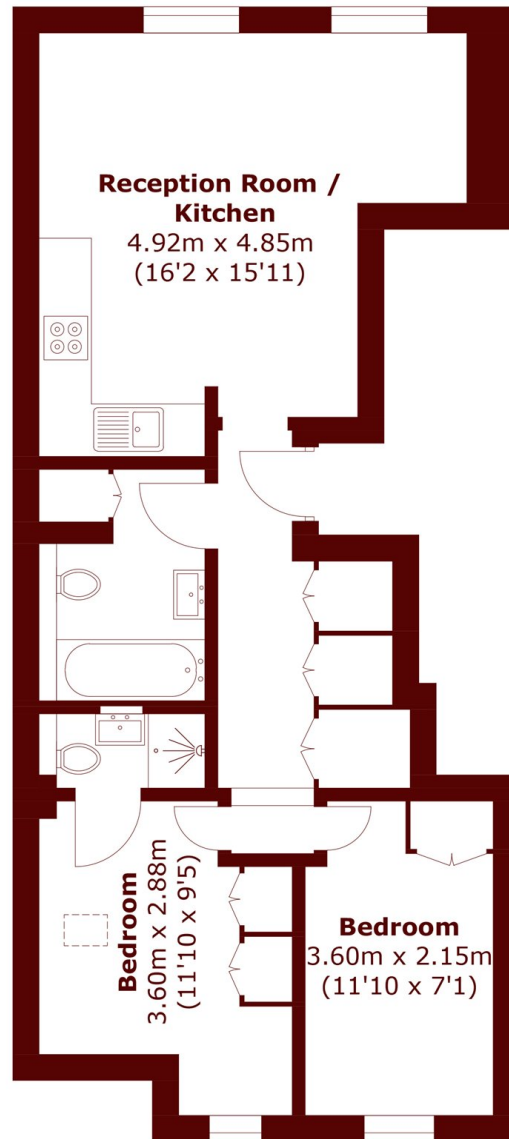


FURTHER DETAILS

The principal bedroom benefits from a contemporary en-suite, while the second double bedroom is well-proportioned and served by an additional bathroom. Large windows allow for plenty of natural light and offer attractive views overlooking Portobello Road.



STEP INSIDE PORTOBELLO ROAD



First Floor

Total area (approx.): 52.5 sq. m (562.9 sq. ft)

Notting Hill
020 7313 2890

Energy Rating: C We aim to make our particulars both accurate and reliable. However, they are not guaranteed; nor do they form part of an offer or contract. If you require clarification on any points then please contact us, especially if you're traveling some distance to view. Please note that appliances and heating systems have not been tested and therefore no warranties can be given as to their good working order

MARSH &
PARSONS