

HS HAIR & SON



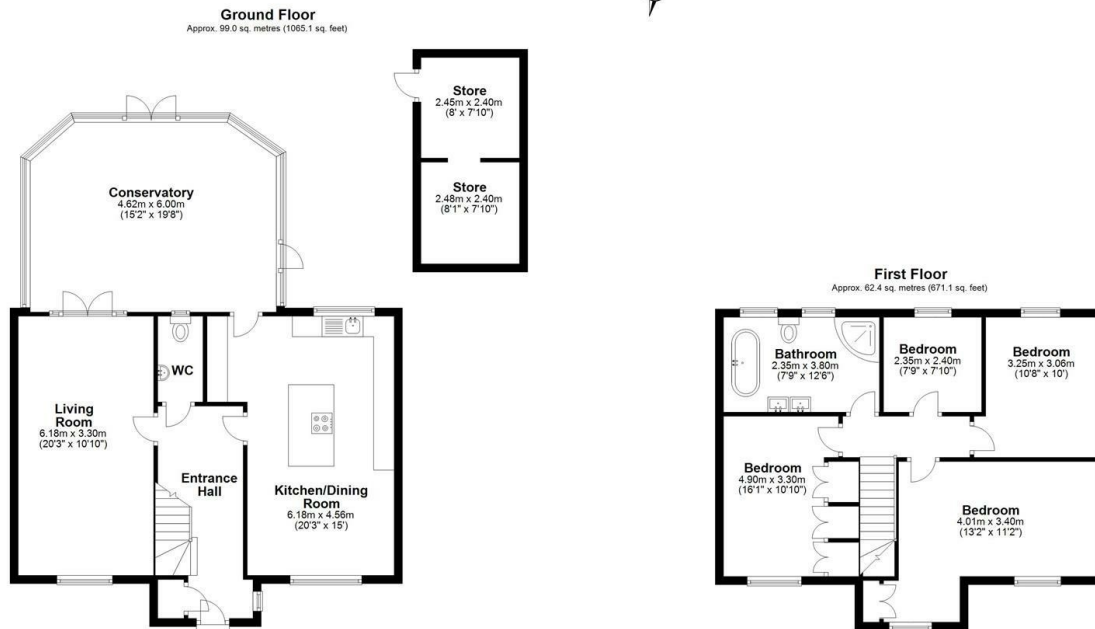
Victory Lane , Rochford SS4 3AN

- DETACHED HOUSE
- OPEN PLAN KITCHEN/DINING ROOM
 - LARGE CONSERVATORY
- BRIGHT AND AIRY LIVING ROOM
- LOW MAINTENANCE REAR GARDEN
- FOUR BEDROOMS
- OFF ROAD PARKING
- OUTSIDE STORAGE
 - POPULAR AREA
- NO ONWARD CHAIN

Guide Price £525,000 Freehold



Local Authority **Rochford District Council**
 Council Tax Band **F**
 EPC Rating **C**



Total area: approx. 161.3 sq. metres (1736.2 sq. feet)

All measurements have been taken as a guide to prospective buyers only and are not precise. This plan is for illustrative purposes only and no responsibility for any error, omission or misstatement. The services, systems and appliances shown have not been tested and no guarantee as to their operability or efficiency can be given. Measurements may have been taken from the widest area and may include wardrobe/cupboard space. No guarantee is given to any measurements including total areas. Buyers are advised to take their own measurements. Plan produced using PlanUp.

Victory Lane

Sales Office
 190 London Road, Southend-On-Sea,
 Essex, SS1 1PJ

Contact
 01702 34 11 77
<https://hairandson.co.uk/>

Agents Note: Whilst every care has been taken to prepare these particulars, they are for guidance purposes only. All measurements are approximate and for general guidance purposes only and whilst every care has been taken to ensure accuracy, they should not be relied upon and potential buyers/tenants are advised to recheck the measurements.

