

for sale

offers in excess of **£365,000**



Thickwood Lane Colerne CHIPPENHAM SN14 8BT

Beautiful Family Home. 2/3 Bedrooms.
Extended to give STUNNING open plan
living space. Garden. Garage in block.
Beautiful Rural Views to the front. Great
Location. Viewing Advised.



Thickwood Lane Colerne CHIPPENHAM SN14 8BT

Description

Discover this beautifully presented home in the sought-after village of Colerne, perfectly blending modern living with countryside charm. Recently extended, the property boasts an impressive open-plan kitchen, sitting room, and dining area, creating a light-filled space ideal for entertaining and family life.

Offering 2/3 versatile bedrooms, this immaculate home is finished to an exceptional standard throughout. To the front, enjoy breathtaking rural views that capture the essence of village living. Outside, you'll find a private garden and a garage located in a nearby block, providing convenience and practicality.

This property is a rare opportunity to own a stylish home in a picturesque setting—perfect for those seeking peace, space, and modern comfort.



Ground Floor

Entrance Hall

Stairs to first floor landing, doors to bedroom three and kitchen area, cupboard, inset spot lights, window to front aspect.

Bedroom Three

11' 5" Max x 15' 3" (3.48m Max x 4.65m)

Window to front aspect, television point, radiator, fitted carpet, feature fireplace.

Kitchen

19' 1" x 9' 2" (5.82m x 2.79m)

Beautifully fitted kitchen with a range of high gloss finish eye and base level units with work surface over, two eye level ovens, hob, extractor, fitted appliances, including dishwasher, fridge and freezer, open plan to sitting area and dining area. Door to utility cupboard.

Utility

8' 1" x 2' 11" (2.46m x 0.89m)

Plumbing and space for washing machine, space for condensing tumble dryer, work surface.

Living/Dining Room

23' 7" x 7' 2" (7.19m x 2.18m)

Stunning light room with vaulted ceiling and tri-fold doors across the back leading to the garden, a true relaxing space for the family to sit and spend time together, tv area, radiators, dining area, door to inner hall that has a door to side aspect and a WC.

Window to front aspect, wall mounted boiler (serviced yearly) wash hand basin, close coupled WC, radiator, extractor fan.

First Floor

Landing

Doors to bedrooms and bathroom. Corridor leading to where the stairs would be according to the planning permission to go in to the loft to create another bedroom and en-suite.

Bedroom One

15' 3" Max into wardrobe x 10' 11" (4.65m Max into wardrobe x 3.33m) Window to rear aspect, fitted carpet, built in double wardrobe, television point, radiator.

Bedroom Two

12' 1" x 8' 5" up to wardrobe (3.68m x 2.57m up to wardrobe)

Window to front aspect with some truly stunning rural views that you can see for miles unbroken. double wardrobe, radiator, fitted carpet.

Bathroom

Stunning four piece bathroom comprising of a panel enclosed Jacuzzi style bath with whirlpool style jets, double shower enclosure, vanity wash hand basin, heated towel rail, close coupled WC. two windows to front aspect.

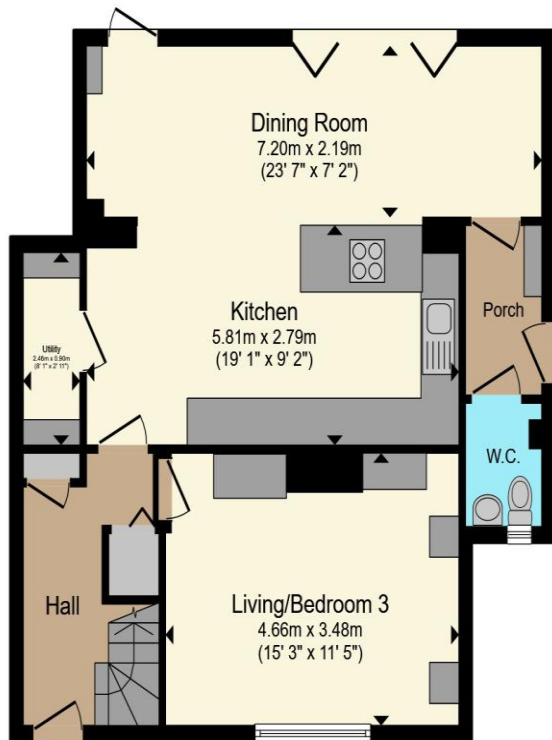
Garden

Enclosed garden with gated access to the green space behind, lawn area beyond, stone chip borders,

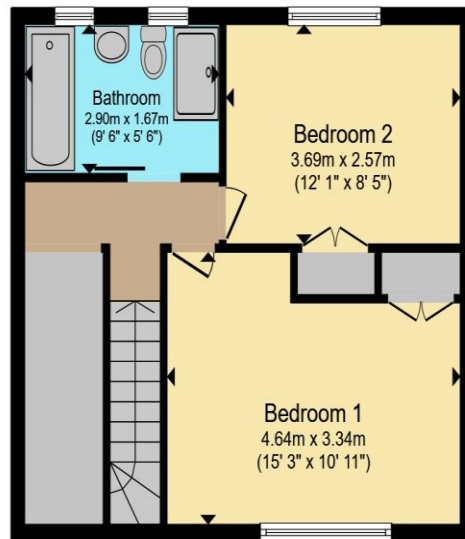
Agents Note

There are plans available in the office which we will also bring to a viewing to convert the loft, these will not lapse as the work has begun. any questions on this please ask. There is also a garage in a block to the rear of the property.





Ground Floor



First Floor

Total floor area 109.1 m² (1,174 sq.ft.) approx

This floor plan is for illustrative purposes only. It is not drawn to scale. Any measurements, floor areas (including any total floor area), openings and orientation are approximate. No details are guaranteed, they cannot be relied upon for any purpose and they do not form part of any agreement. No liability is taken for any error, omission or misstatement. A party must rely upon its own inspection(s). Powered by www.propertybox.io



To view this property please contact Connells on

T 01249 652 476
E chippenham@connells.co.uk

59 Market Place
CHIPPENHAM SN15 3HL

Property Ref: CHM306426 - 0005

Tenure:Freehold EPC Rating: D

Council Tax Band: C

view this property online connells.co.uk/Property/CHM306426



1. MONEY LAUNDERING REGULATIONS Intending purchasers will be asked to produce identification documentation at a later stage and we would ask for your co-operation in order that there will be no delay in agreeing the sale. 2. These particulars do not constitute part or all of an offer or contract. 3. The measurements indicated are supplied for guidance only and as such must be considered incorrect. Potential buyers are advised to recheck measurements before committing to any expense. 4. We have not tested any apparatus, equipment, fixtures, fittings or services and it is in the buyers interest to check the working condition of any appliances.

Connells Residential is registered in England and Wales under company number 1489613, Registered Office is Cumbria House, 16-20 Hockliffe Street, Leighton Buzzard, Bedfordshire, LU7 1GN. VAT Registration Number is 500 2481 05.

see all our properties at www.connells.co.uk | www.rightmove.co.uk | www.zoopla.co.uk