

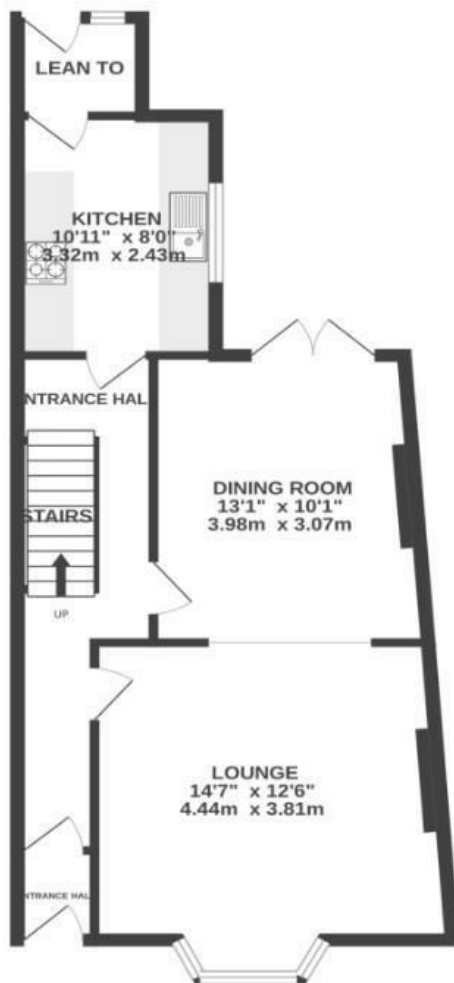
Islington Road

SOUTHVILLE

APPROXIMATE FLOOR AREA
119.5 SQM / 1286 SQFT



GROUND FLOOR



FIRST FLOOR



SECOND FLOOR



EXTERNAL



Illustrations are for reference purposes only, measurements are approximate, not to scale.

Boardwalk

Islington Road , BRISTOL

£

£600,000



BS3 1QB

zzz

3 Bedrooms



1 Bathrooms

"It took me less than 10 minutes to decide to move to Islington Road. It was the first and only house we looked at. The main draw was the long, south-facing garden, stretching back almost 60 feet from the French doors at the back of the dining room. I loved the sense of security. The rear of the property is completely enclosed with large gardens to left and right and the high, stone retaining wall along the back only adds to the sense of living in a private haven. Yet being located in the heart of the terraces, there is the feeling of truly belonging to the city and being part of a community. I've never tired of the view across to the suspension bridge or looking over the city from the loft windows. We've loved hosting barbecue parties in the garden and watching from the loft as the balloons make their morning ascent from Ashton Court during the fiesta. And throughout the spring and summer months, the bats that return to the garden night after night just after sundown."

