



# HUNTS PAPER FACTORY, SW6

£500,000

Located on the first floor of a fantastic modern development in the heart of Fulham this one bedroom flat sits on the eastern side of this fantastic new build scheme. The development itself is built around an original

One bedroom

Central Fulham location

Large open plan living room

Share of freehold

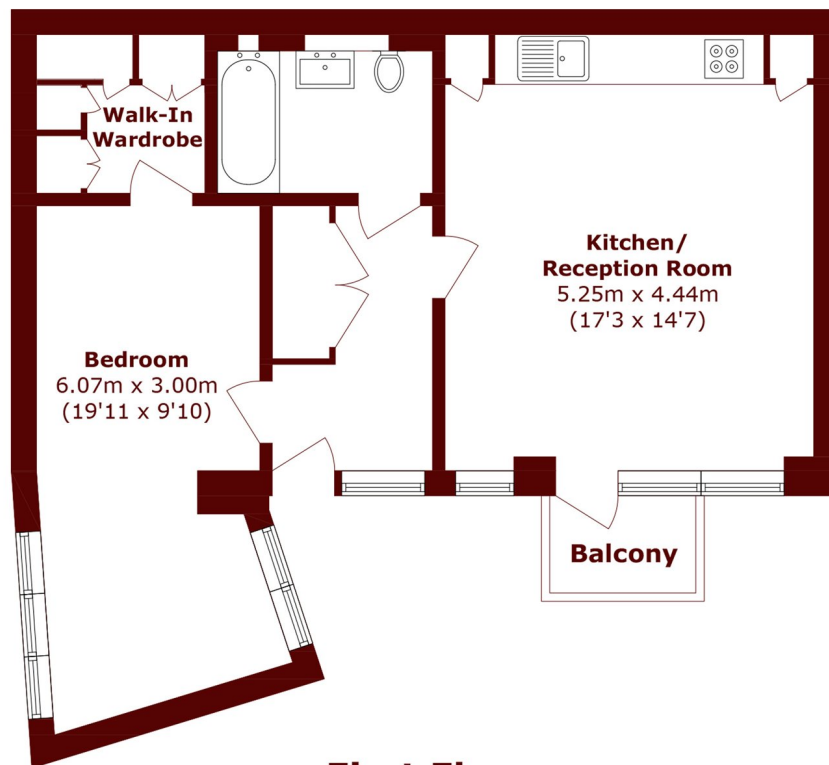
First floor

Gated development

@marshandparsons  
marshandparsons.co.uk

MARSH &  
PARSONS

# STEP INSIDE HUNTS PAPER FACTORY



## First Floor

Total Area (approx.): 56.5 sq. m (608.1 sq. ft)

Balcony area (approx.): 2.0 sq. m (21.5 sq. ft)

**Bishops Park**  
020 7993 9888

Energy Rating: We aim to make our particulars both accurate and reliable. However, they are not guaranteed; nor do they form part of an offer or contract. If you require clarification on any points then please contact us, especially if you're traveling some distance to view. Please note that appliances and heating systems have not been tested and therefore no warranties can be given as to their good working order

**MARSH &  
PARSONS**