



## 9 Mathews Street, Glyncorrwg, SA13 3BD

£120,000

Could this be your first or next step on the property ladder? This well presented three double bedroom terraced property offers spacious accommodation in a rural village set in the spectacular Afan Valley. If you're a fan of outdoor pursuits, this could be your ideal location as the area has mile upon mile of cycle tracks and footpaths, fishing ponds and only a two mile drive from the proposed Wildfox Adventure Resort (currently under construction).

With local amenities, primary school and public transport nearby, this is an ideal family home.

The accommodation briefly comprises a hallway, reception room, dining room, kitchen, inner hallway and bathroom top the ground floor. Landing and three double bedrooms to the first floor. The property further benefits from uPVC double glazing throughout, gas central heating via combination boiler and an enclosed rear garden and block shed.

NO ONWARD CHAIN

VIEWING RECOMMENDED

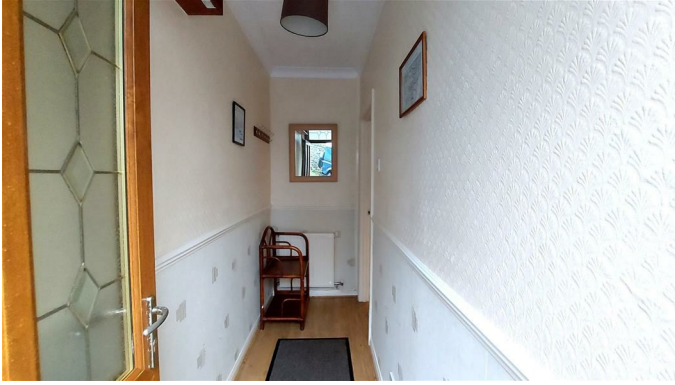
Tenure = Freehold (TBC by legal representative)

EPC = D

Council Tax band = A

## Ground Floor

### Hallway



Entry via a uPVC double glazed door. Textured and coved ceiling, papered walls, wood effect laminate flooring, radiator and door to:

### Reception Room 21'7" x 14'9" (6.6 x 4.5)



Textured and coved ceiling, papered walls, wood effect laminate flooring, coal effect electric fire set on a tiled hearth with wooden mantle, two radiators, uPVC double glazed windows to front and rear, carpeted stairs to first floor and door to:

### Dining Room 11'1" x 9'6" (3.4 x 2.9)



Textured and coved ceiling, papered walls, wood effect laminate flooring, radiator, uPVC double glazed window to side, under stairs storage and door to:

### Kitchen 9'6" x 8'6" (2.9 x 2.6)



Textured and coved ceiling, pvc panelled walls, wood effect tiled flooring, a range of base and wall mounted units with a complementary work surface housing a stainless steel sink/drain, space for dishwasher, cooker and fridge freezer, wall mounted gas combination boiler, uPVC double glazed window to side and door to:

### Inner Hallway

Textured ceiling, wood panelled walls, tiled flooring, space for washing machine, uPVC double glazed door to side and door to:

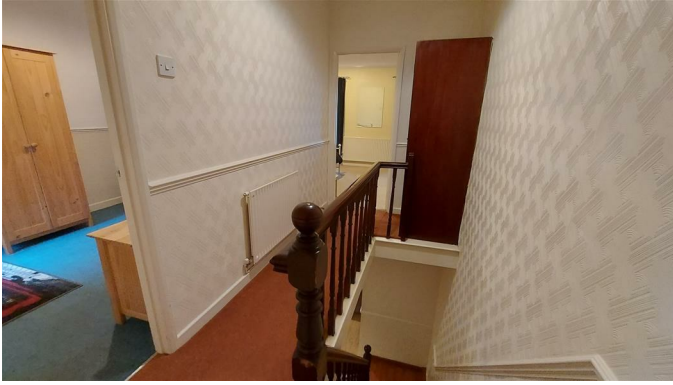
### Bathroom 8'6" x 6'2" (2.6 x 1.9)



Pvc panelled ceiling and walls, tiled flooring, uPVC double glazed window with obscured glass to rear, chrome towel rail radiator and a three piece suite comprising a panel bath with shower over a privacy screen, low level W.C and pedestal wash hand basin.

### First Floor

## Landing



Textured and covered ceiling, papered walls, fitted carpet, radiator and three doors off.

## Bedroom One 14'9" x 9'10" (4.5 x 3.0)



Textured and covered ceiling, papered walls, fitted carpet, radiator, two uPVC double glazed windows to front and fitted wardrobes.

## Bedroom Two 11'5" x 8'10" (3.5 x 2.7)



Textured and covered ceiling, papered walls, fitted carpet, radiator and uPVC double glazed window to rear.

## Bedroom Three 11'5" x 9'6" (3.5 x 2.9)



Textured and covered ceiling with loft access, papered walls, wood effect laminate flooring, radiator and uPVC double glazed window to side.

## Outside

### Rear Garden



Area laid to concrete and steps leading to a further area laid to patio, block shed, bordered with block walls and wooden gate offering rear lane access.

## Disclaimer

The information contained within this advertisement is intended as a guide only and does not constitute an offer or contract. While every effort has been made to ensure accuracy, measurements are approximate and provided for indicative purposes only. All marketing content remains the copyright of Ferriers Estate Agents and may not be copied or reproduced without prior written consent. Marketing images are for illustrative purposes. Contents and furnishings are excluded from the sale unless expressly stated otherwise.

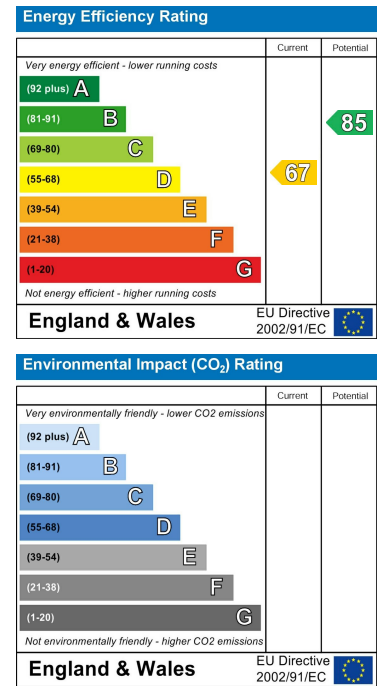
# Floor Plan



# Area Map



# Energy Efficiency Graph



These particulars, whilst believed to be accurate are set out as a general outline only for guidance and do not constitute any part of an offer or contract. Intending purchasers should not rely on them as statements of representation of fact, but must satisfy themselves by inspection or otherwise as to their accuracy. No person in this firm's employment has the authority to make or give any representation or warranty in respect of the property.