



Virtually Staged

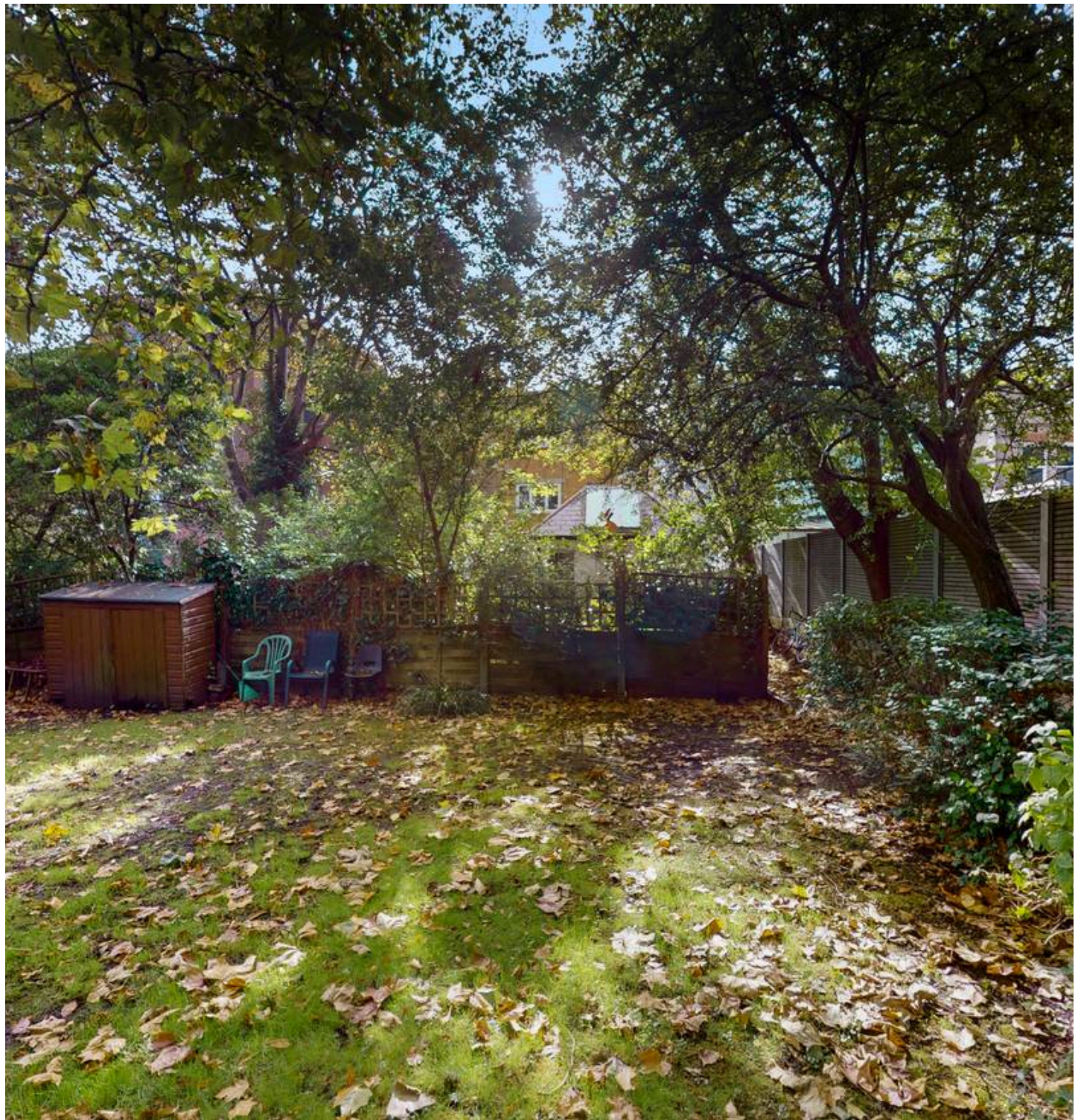
Woodchurch Road, London, NW6  
£410,000



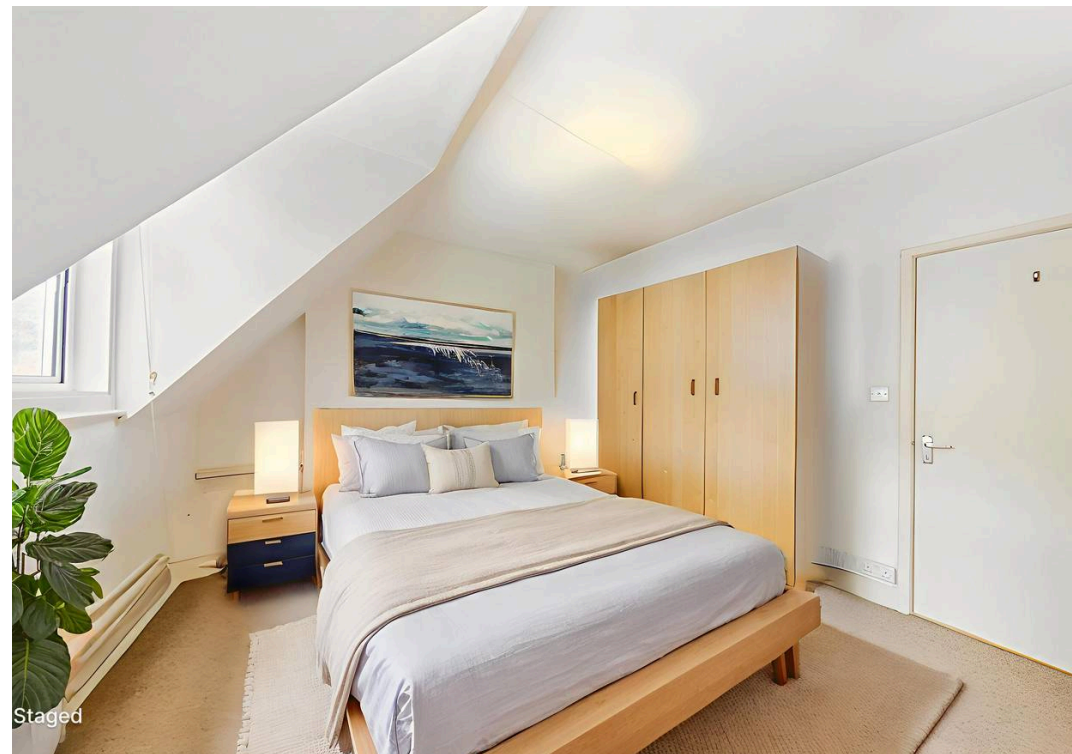
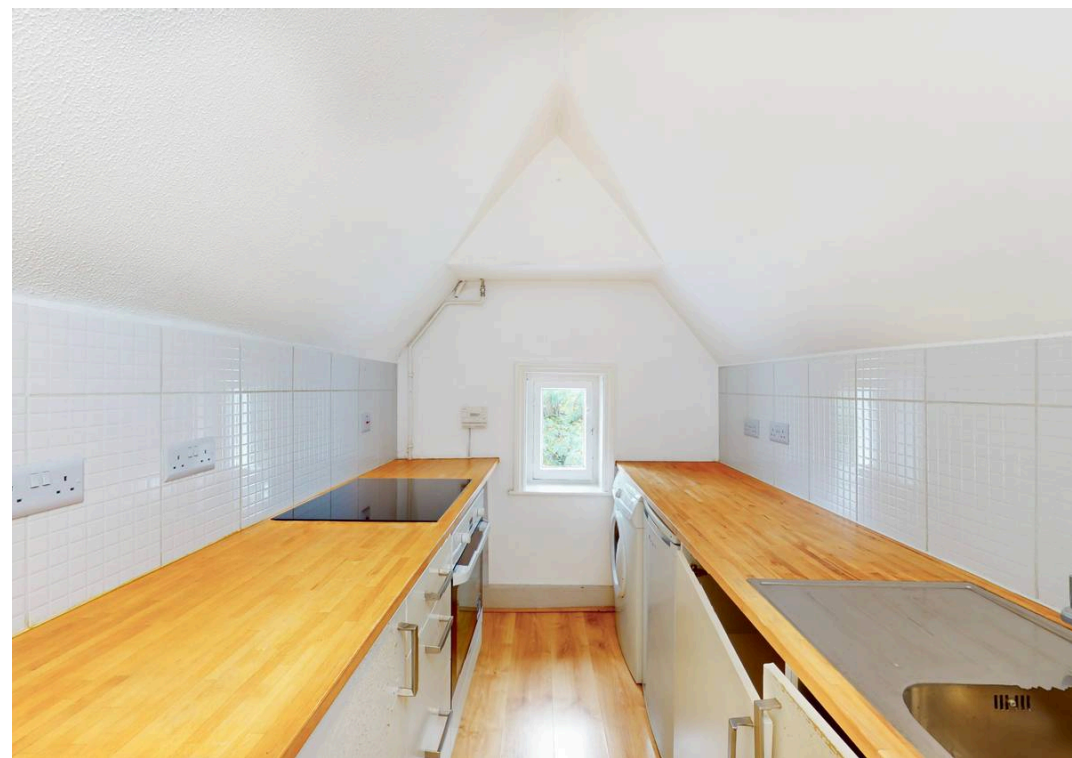
## Woodchurch Road, London, NW6

We are pleased to be marketing this lovely one double bedroom apartment on a quiet tree lined street in West Hampstead, short walk away from the tube station. The apartment has been very well maintained throughout and benefits from a lovely kitchen with wood block work surfaces and white cabinet doors, fully tiled bathroom with bath and shower, good size lounge with comfortable space for a sofa, dining table and chairs and a large bedroom with good storage. The flat benefits from a bright and sunny aspect and makes for a very comfortable home. You also have access to a beautiful communal garden to the rear of the property. Furthermore, you also benefit from having Share of Freehold and the property is Chain Free.

Please note the property has been virtually staged.







# Woodchurch Road, NW6 3PN

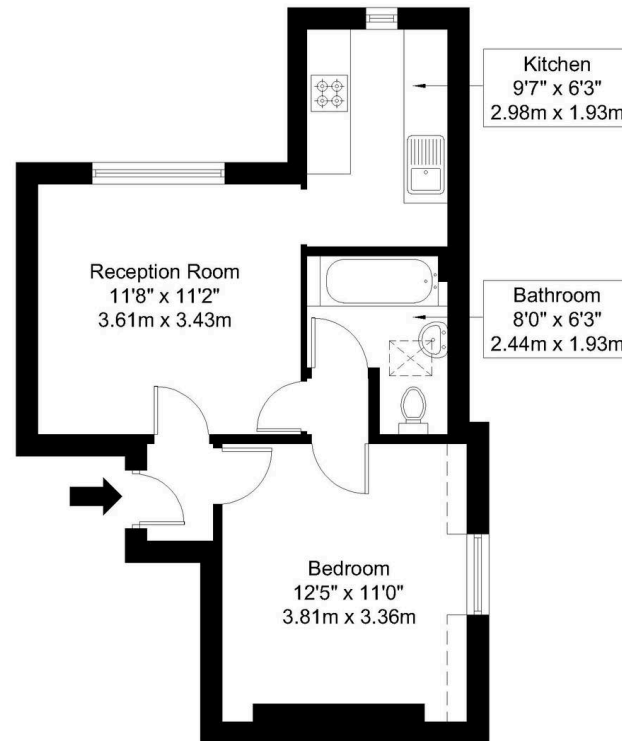
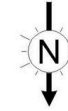
Approx Gross Internal Area = 37.3 sq m / 401 sq ft

Restricted Headroom = 1 sq m / 11 sq ft

Total= 38.3 sq m / 412 sq ft



Reduced Headroom below 1.5m / 5'0"



Second Floor

Ref:

Copyright

**B L E U  
P L A N**

The Floor plan is not to scale and measurements and areas shown are approximate and therefore should be used for illustrative purposes only. The plan has been prepared in accordance with the RICS code of Measuring Practice and whilst we have confidence in the information produced it must not be relied on. Maximum lengths and widths are represented on the floor plan. If there is any aspect of particular importance, you should carry out or commission your own inspection of the property.

Copyright @ BLEUPLAN





## Black Katz

22 West Hampstead Mews, London - NW6 3BB

02073285000 • [Thomas@blackkatz.com](mailto:Thomas@blackkatz.com) • [blackkatz.com/](https://blackkatz.com/)