

38 Hardwick Road, King's Lynn PE30 4HU

£145,000

 2  2  1



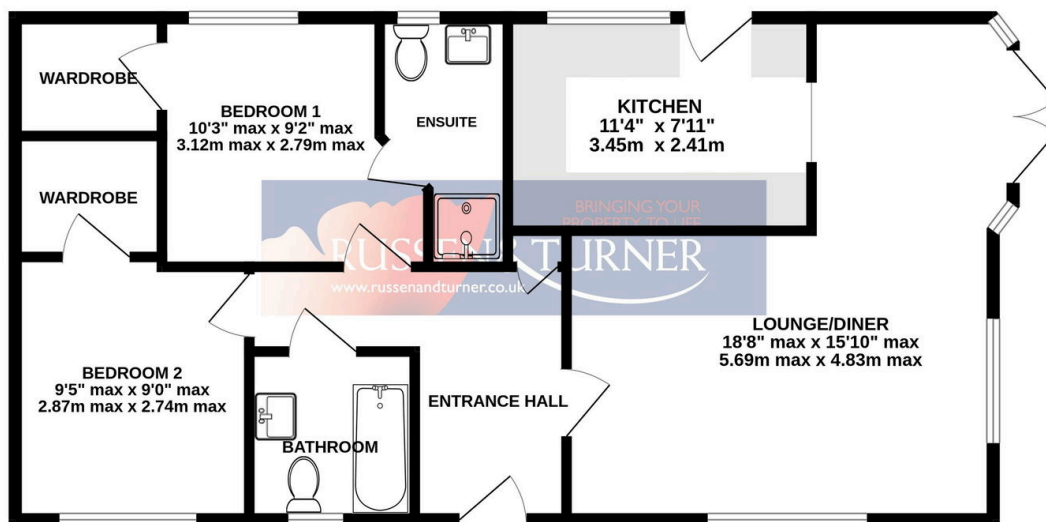
Tucked away in a welcoming over-50s community in King's Lynn, this is a place to enjoy life at your own pace. Think relaxed mornings, space to host friends, and quiet evenings unwinding in comfort. With easy living inside and low-maintenance outdoor space, it's all about freedom, simplicity, and enjoying the next chapter. Step inside and feel right at home.



Key Features

- Park Home
- Garage
- Move in Ready
- Walking Distance to Local Shops and Amenities
- Gas Central Heating
- 2 Double Bedrooms
- Driveway
- Over 50's
- Main Bedroom En-Suite
- Modern Kitchen & Bathroom

GROUND FLOOR
685 sq.ft. (63.6 sq.m.) approx.



TOTAL FLOOR AREA : 685 sq.ft. (63.6 sq.m.) approx.

Whilst every attempt has been made to ensure the accuracy of the floorplan contained here, measurements of doors, windows, rooms and any other items are approximate and no responsibility is taken for any error, omission or mis-statement. This plan is for illustrative purposes only and should be used as such by any prospective purchaser. The services, systems and appliances shown have not been tested and no guarantee as to their operability or efficiency can be given.
Made with Metropix ©2026