



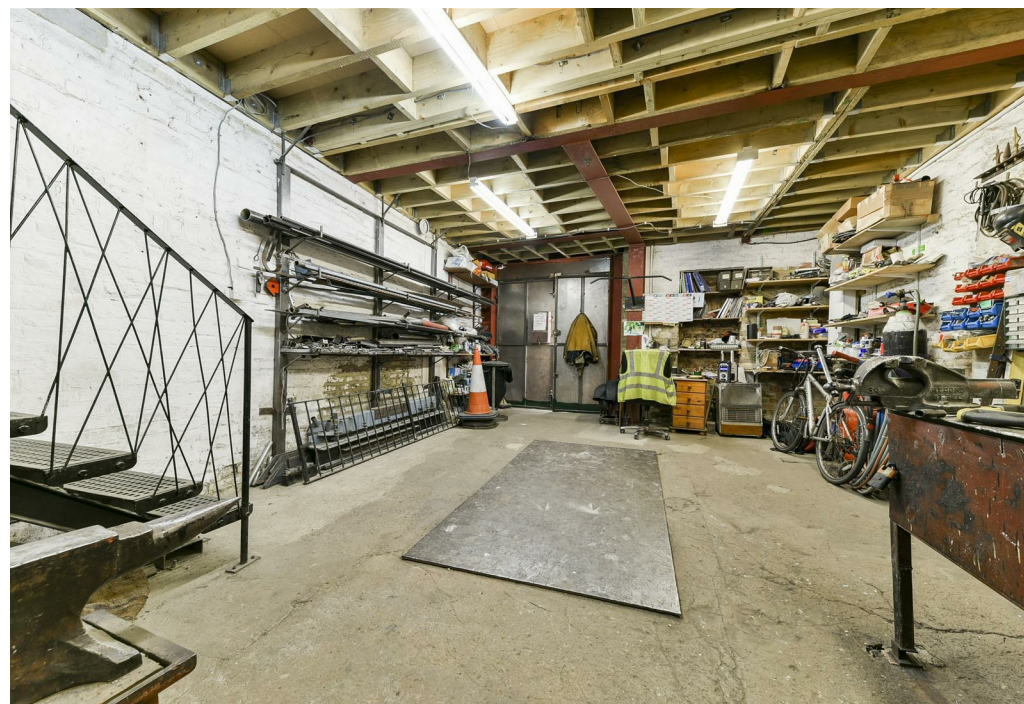
Western Mews, London, W9 3NZ
Asking Price £725,000 Freehold

B
BRAITHWAIT



2 x  2 x  1 x 

A fantastic opportunity to buy an unusual house project, of 1000 sq ft plus, based on Western Mews, within a short walk of Golbourne Road within an old Metalworks building on three floors currently arranged as the ground floor bedroom with plumbing for a ensuite bathroom with stairs up to the master bedroom with tiled contemporary tiled ensuite, and Juliet balcony, and further stairs up to a large reception having planning to put a staircase up the a large terrace currently for access only. Westminster planning in place for residential use as a two bedroom three bathroom house. A few minutes walk to Westbourne park tube. Freehold.



Western Mews, London, W9
Approximate Gross Internal Area
1034 sq ft - 96 sq m

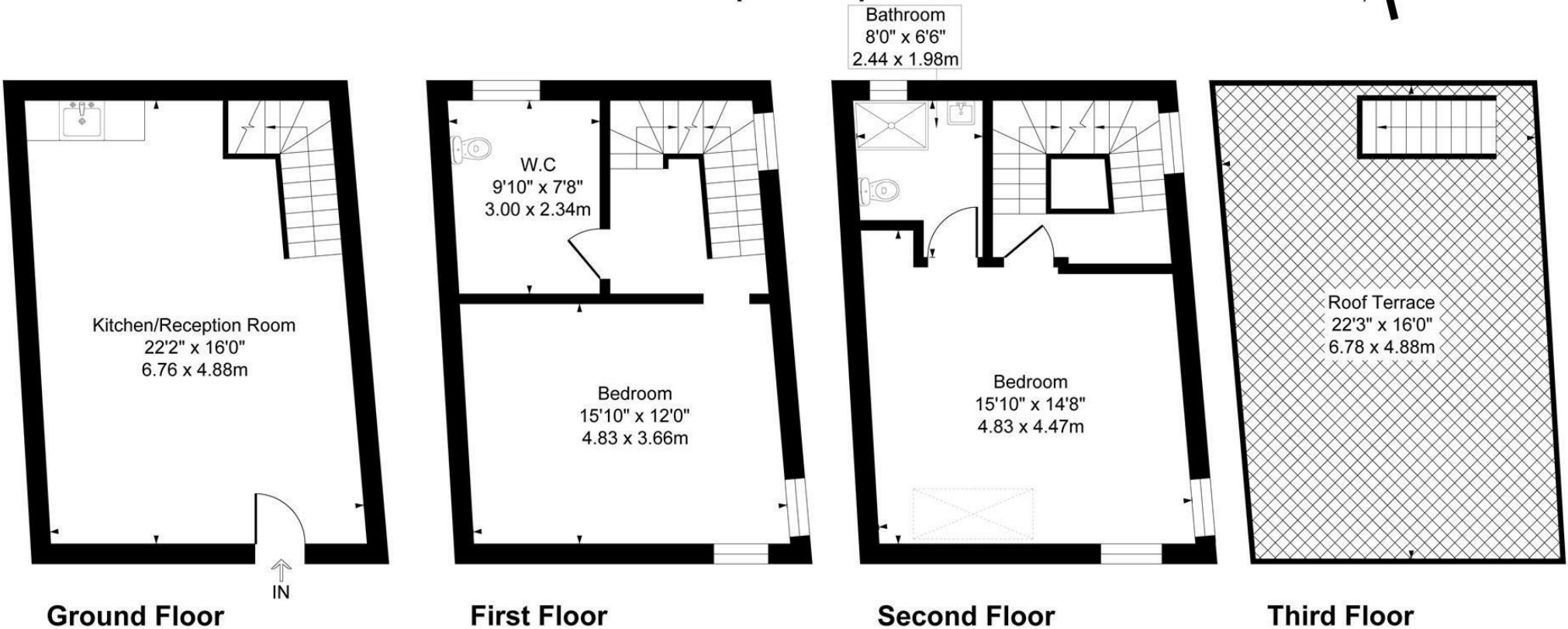
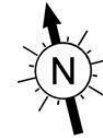


Illustration for identification purposes only, not in scale

Important Notice Debussy Property Service Ltd trading as Braithwait for themselves and for the vendor of this property whose agents they are, give notice that (i) these particulars do not constitute any part of an offer or contract, (ii) all statements contained within these particulars are made without responsibility on the part of Braithwait or the vendor, (iii) whilst none in good faith, none of the statements contained within these particulars are to be relied upon as a statement of representation or fact, (iv) any intending purchaser must satisfy him/herself by inspection or otherwise as to the correctness of each of the statements contained within these particulars, (v) the vendor does not make or give either Braithwait or any person within their employment any authority to make or give any representation or warranty whatsoever in relation to this property. Wide angled lenses may be used in photographs.

Call us on 0207 289 8889 or email sales@braithwait.co.uk

