

**MANOR**

42 NORTHBOURNE ROAD  
LONDON | SW4 7DJ





A stunning, two bedroom ground floor flat, with private entrance.  
Situated on the ground floor of a boutique apartment block.

A short walk from Clapham Common and benefitting from a new lease and very low service charge, the apartment has no onward chain and is presented to an incredible standard throughout.

Clapham Park Road and nearby Abbeville Road provide many shops, bars and restaurants. Clapham High Street and The Pavement are also within reach, along with the open spaces of Clapham Common and Northern Line links at Clapham Common station.



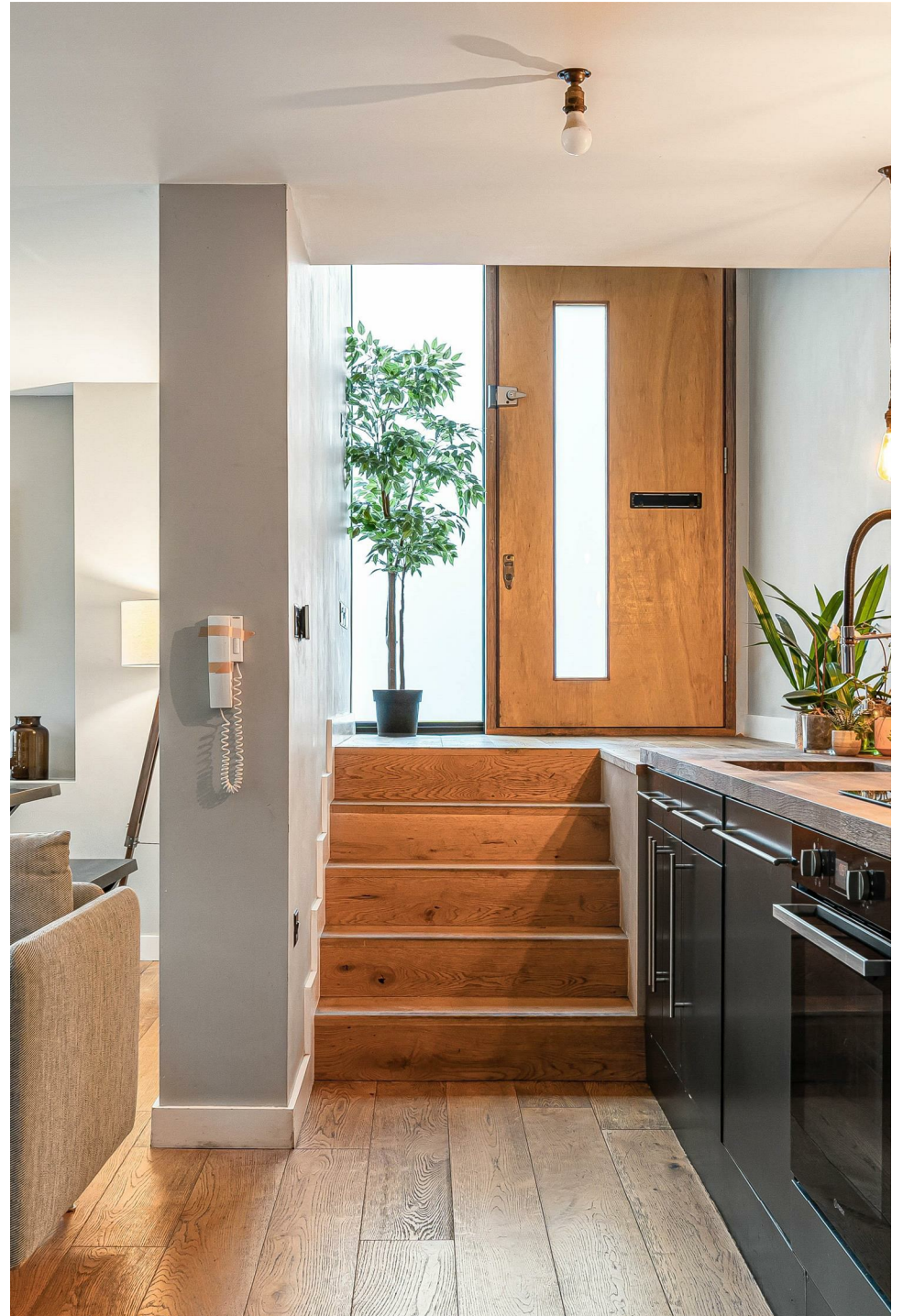
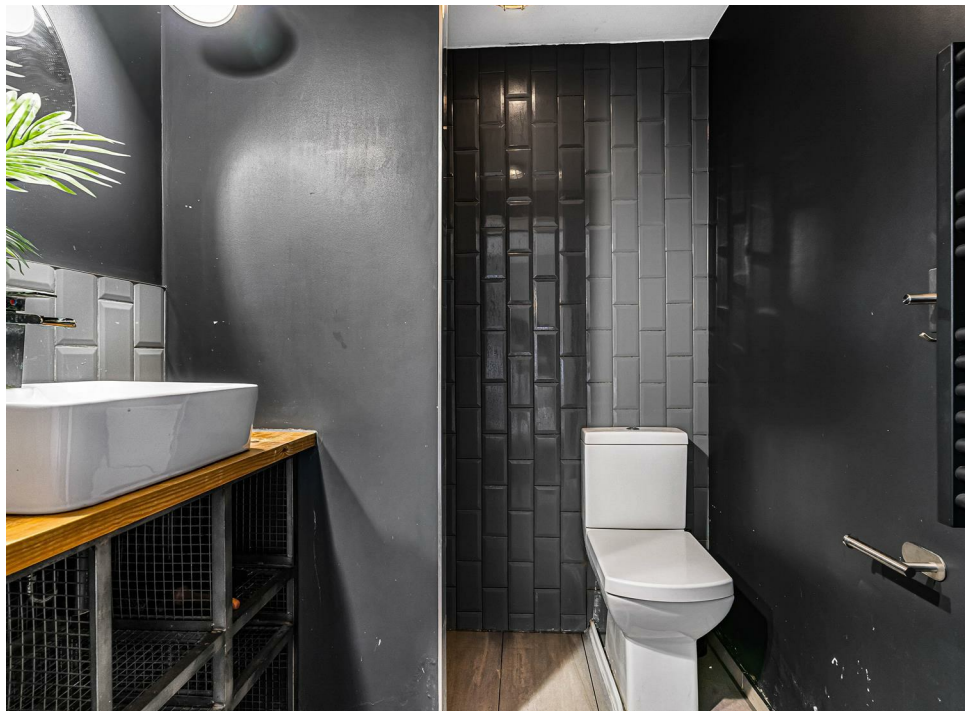










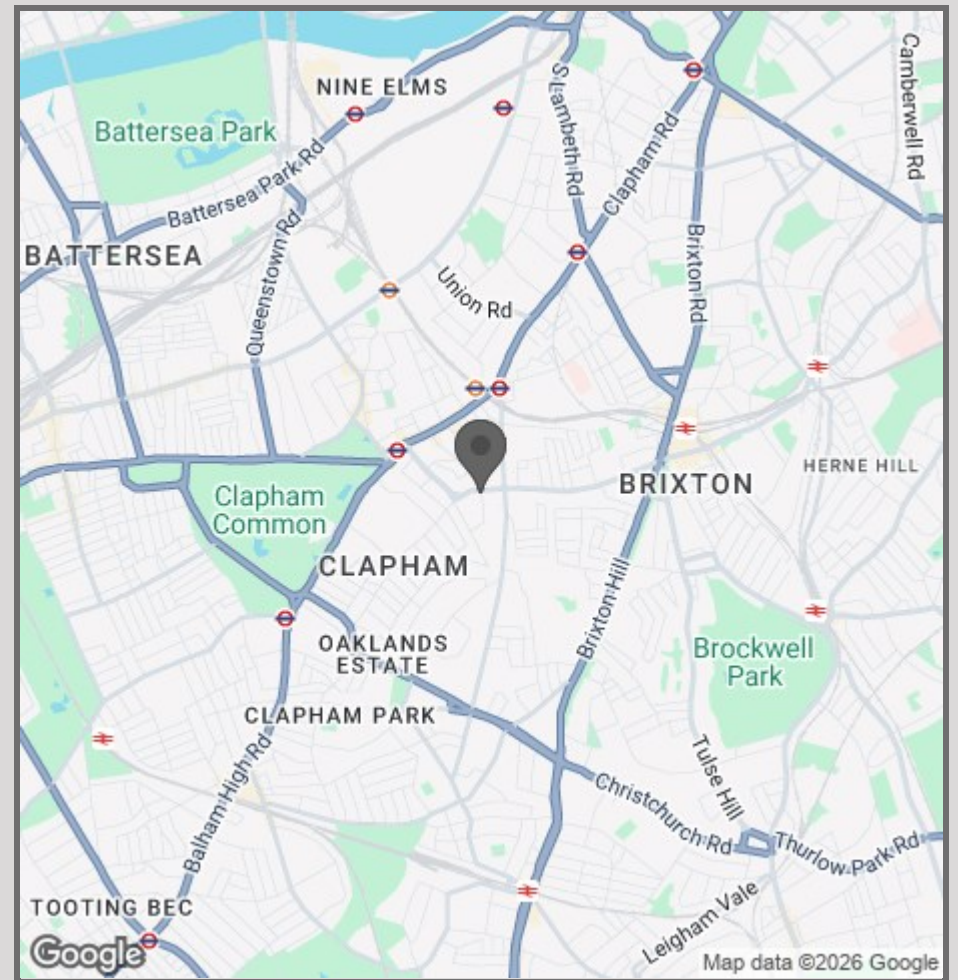








- Private entrance
- Master bedroom with inbuilt wardrobes
- En suite shower room and separate bathroom with roll top bath
- Exposed brick walls and contemporary lighting
- Large, additional double bedroom



42 High Street  
Woodstock  
OX20 1TG

01865 955500

hello@manoroxford.com

www.manoroxford.com

MANOR



GROUND FLOOR  
816 SQ FT / 75.82 SQ M





**MANOR**