



RATHMELL DRIVE, SW4

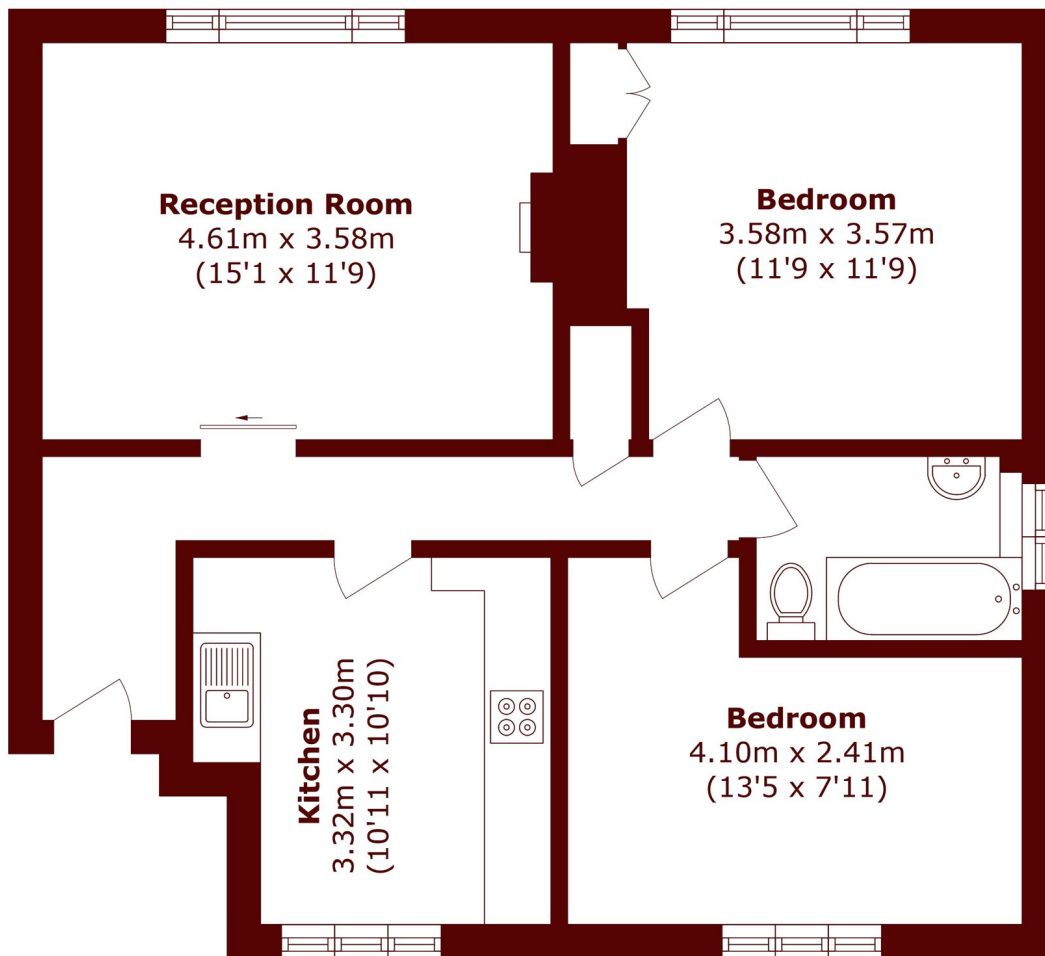
£1,800 per month

This beautifully presented top-floor apartment combines generous living space with impressive views and excellent natural light.

Two bedrooms
Spacious
Bright

Wooden flooring
Communal gardens
Clapham South

STEP INSIDE RATHMELL DRIVE



Total area (approx.): 66.8 sq. m (719.0 sq. ft)

Balham & Clapham South
020 8772 9200

Energy Rating: We aim to make our particulars both accurate and reliable. However, they are not guaranteed; nor do they form part of an offer or contract. If you require clarification on any points then please contact us, especially if you're traveling some distance to view. Please note that appliances and heating systems have not been tested and therefore no warranties can be given as to their good working order

MARSH &
PARSONS