



25 Jireh Court, Haywards Heath, W Sussex, RH16 3BH

£1,325 Per Calendar Month

This spacious mid-century top (second) floor flat sits in a prime location for Haywards Heath Station, southerly balcony and a brand new kitchen. Available now and offered unfurnished.

The Flat...

This spacious top (second) floor apartment forms part of Jireh Court - an incredibly convenient block that is ideally positioned for the town centre, Waitrose Superstore, Haywards Heath's mainline station and The Broadway with its bars & restaurants.

The flat is offered in excellent order with neutral décor, brand new carpets, a brand new kitchen, gas fired central heating and uPVC double glazing.

The accommodation is an excellent size and the open plan living room is a great size with plenty of room for sitting and dining areas. The dual aspect set up means you have plenty of natural light flooding in and the southerly balcony enjoys a pleasant leafy outlook.

Both bedrooms are doubles, each with fitted wardrobes and served by the bathroom.

Outside you have residents parking (non allocated).

The Location...

Jireh Court is a purpose built block of flats situated on Perrymount Road, within a short walk of mainline train station with its fast & regular commuter services to London (approx 47 mins to Victoria/London Bridge), Brighton and Gatwick International Airport. Waitrose is also nearby whilst the town's social hub, The Broadway is a couple of moments walk and boasts a selection of bars and restaurants including, Zizzi, Pizza Express, Lockhart Tavern and Orange Square. Haywards Heath town centre with its extensive range of cafés, bars, restaurants and shops is also nearby. By car, surrounding areas can be easily accessed via the A23(M).

The Specifics...

Council Tax Band B

Permitted Fees:

Holding deposit - one weeks rent - £305.76

Deposit - five weeks rent - £1528.84

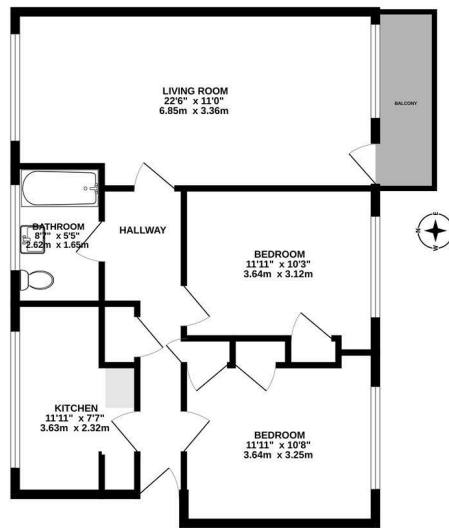
The holding deposit will be refunded against the first month's rent but can be retained if the applicant withdraws from the property, fails the reference checks due to false or misleading information.

We believe the above information to be accurate but recommend checking personally prior to exchange of contracts.

NB

Some photos are digitally furnished for marketing purposes.

TOP FLOOR
698 sq.ft. (64.8 sq.m.) approx.



TOTAL FLOOR AREA: 698 sq.ft. (64.8 sq.m.) approx.
Plans for illustrative purposes only - intending purchasers should check measurements personally.
Made with Metropack 1/2023

Energy Efficiency Rating		Current	Potential
Very energy efficient - lower running costs			
(92 plus) A			
(81-91) B			
(69-80) C			
(55-68) D			
(39-54) E			
(21-38) F			
(1-20) G			
Not energy efficient - higher running costs			
England & Wales		62	79
EU Directive 2002/91/EC			

Environmental Impact (CO ₂) Rating		Current	Potential
Very environmentally friendly - lower CO ₂ emissions			
(92 plus) A			
(81-91) B			
(69-80) C			
(55-68) D			
(39-54) E			
(21-38) F			
(1-20) G			
Not environmentally friendly - higher CO ₂ emissions			
England & Wales			
EU Directive 2002/91/EC			



VIEWING BY APPOINTMENT WITH PSP HOMES
54 Church Road, Burgess Hill, West Sussex, RH15 9AE. TELEPHONE 01444 250999
OPEN SEVEN DAYS A WEEK www.psphomes.co.uk

Much care is taken in the preparation of our particulars, but we cannot guarantee the information given is accurate. Property details are issued a general guide only and may not form any part of an offer or contract. We recommend intending purchasers check details personally.