



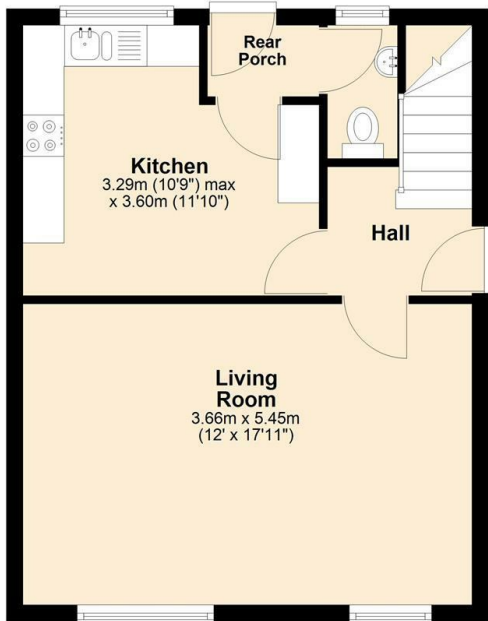
2 Peatfield Road, Killamarsh, Sheffield, S21 2DJ

Offers In The Region Of £139,950

- End Terraced House
- Good sized Corner Plot
- Gas Central Heating
- Close to Amenities, Retail and Country Parks
- Three Bedrooms
- Requires Modernisation
- Off Road Parking
- No Chain
- uPVC Double Glazing
- Popular Area

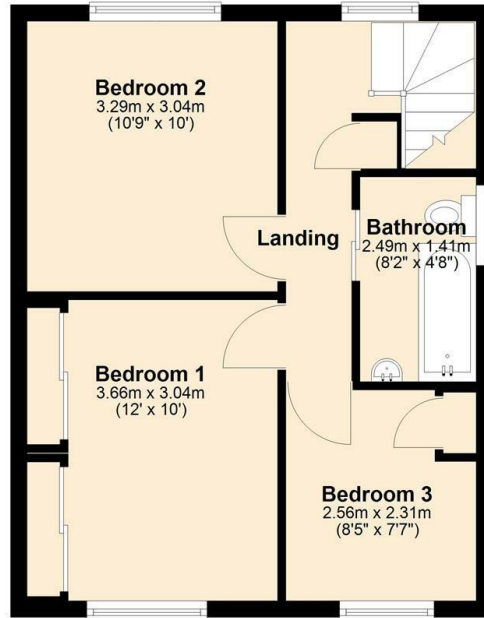
Ground Floor

Approx. 38.4 sq. metres (413.3 sq. feet)

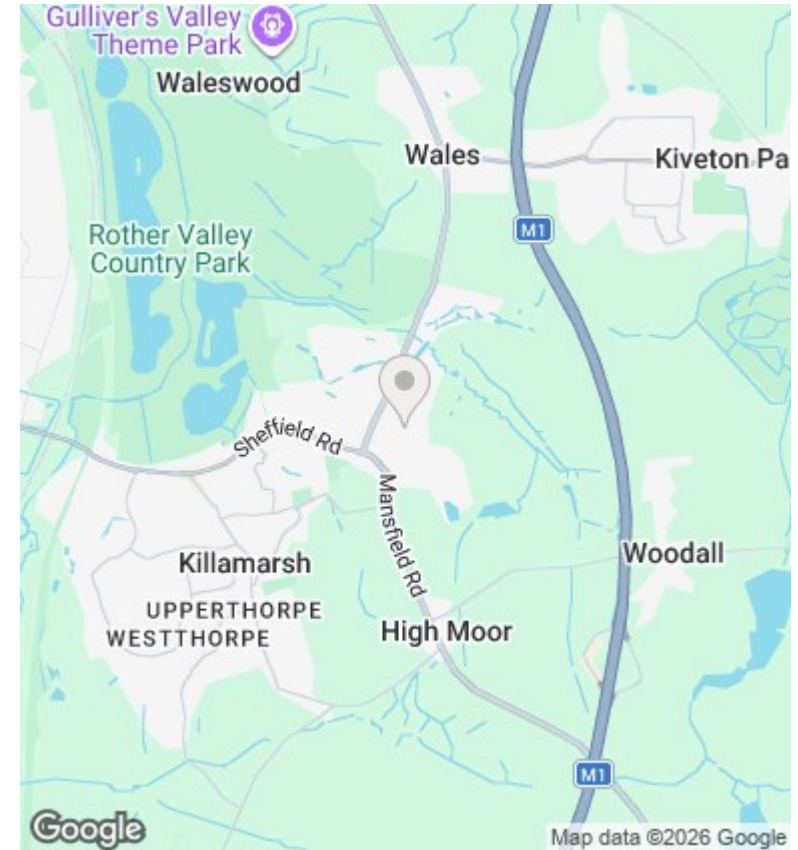


First Floor

Approx. 38.4 sq. metres (413.3 sq. feet)



Total area: approx. 76.8 sq. metres (826.7 sq. feet)



Directions

Viewings

Viewings by arrangement only. Call 0114 283 4050 to make an appointment.

Council Tax Band

EPC Rating:

Energy Efficiency Rating		
	Current	Potential
<i>Very energy efficient - lower running costs</i>		
(92 plus) A		
(81-91) B		
(69-80) C		
(55-68) D		
(39-54) E		
(21-38) F		
(1-20) G		
<i>Not energy efficient - higher running costs</i>		
England & Wales	EU Directive 2002/91/EC	