



# Hodges Close, Portskewett

2 Bedrooms  
1 Bathrooms  
1 Receptions

£269,995

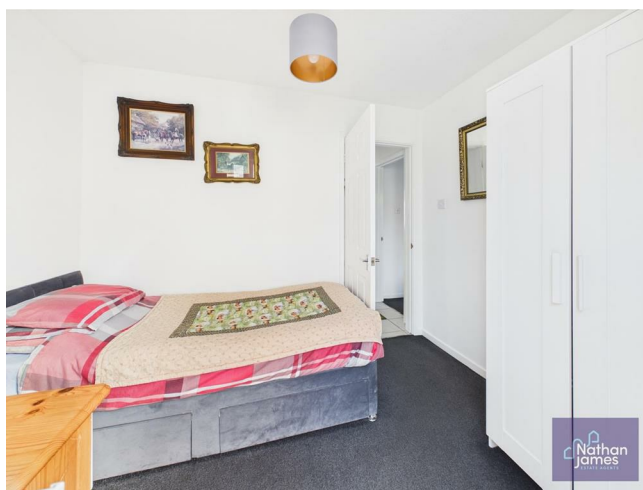
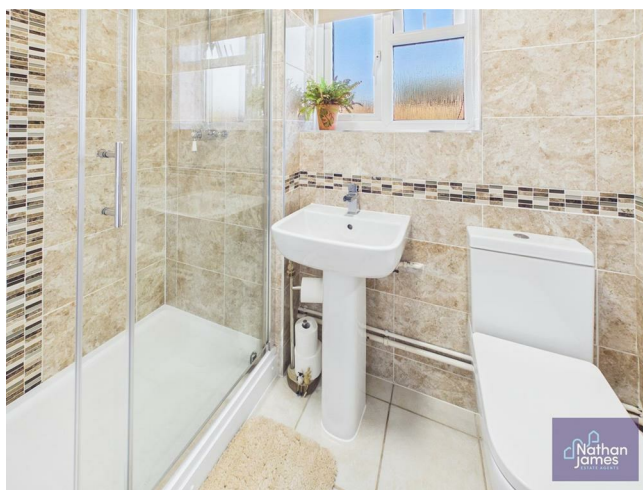
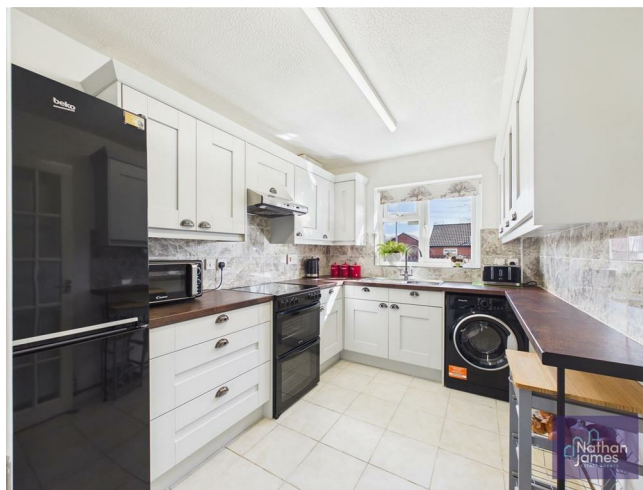


Offered to the market with No Onward Chain. Nestled in the charming area of Hodges Close, Portskewett, this delightful house presents an excellent opportunity for those seeking a comfortable and inviting home. With a well-proportioned reception room, and a bright and airy well equipped kitchen. The layout is thoughtfully designed, ensuring a warm and welcoming atmosphere throughout.

The house features two cosy bedrooms, perfect for a small family or those looking to downsize. Each room is filled with natural light, creating a serene environment for rest and rejuvenation. The bathroom is conveniently located, providing essential amenities for daily living.

Portskewett is a lovely village that boasts a friendly community and a range of local amenities. Residents can enjoy the tranquillity of suburban life while being just a short distance from the village of Caldicot, which offers a variety of shops, schools, and recreational facilities.

This property is ideal for first-time buyers, small families, or investors looking for a rental opportunity in a desirable location. With its appealing features and convenient setting, this house is sure to attract interest. Do not miss the chance to make this charming home your own.



Kitchen  
7'8x10

Living Room  
12'3x18'3

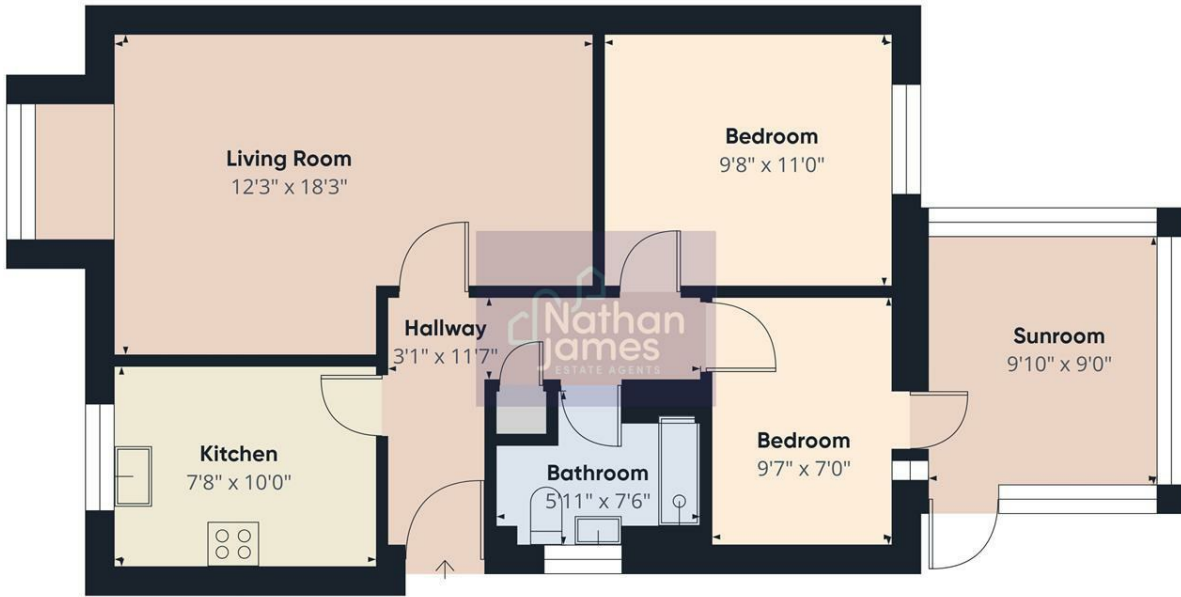
Bathroom  
5'11x7'6

Bedroom One  
9'8x11'0

Bedroom Two  
9'7x7

Sunroom  
9'10x9'0



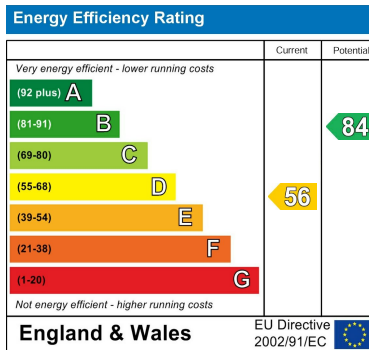


Approximate total area<sup>(1)</sup>  
677 ft<sup>2</sup>

(1) Excluding balconies and terraces

Calculations reference the RICS IPMS 3C standard. Measurements are approximate and not to scale. This floor plan is intended for illustration only.

GIRAFFE360



8 Newport Road  
Caldicot  
Monmouthshire  
NP26 4HX  
01291 421600

nj@nathanjamesestateagents.co.uk  
nathanjamesestateagents.com