



Guide Price
£350,000

Freehold

4x  1x  1x 

**Woodbury Road,
Walderslade Woods,
Chatham, Kent, ME5**

OVER 60?

Secure this property
for up to **59% less!**

Wards
Helping you move forwards



Main features

- An extended semi detached house ideal for the growing family
- Sought after location in Walderslade Woods
- Extended kitchen area
- A short drive to local shops and amenities
- M2/M20 motorway connections to London and the Kent coast

Accommodation

GROUND FLOOR

Entrance Porch
Entrance Hall
Lounge : 14'5 x 10'2 (4.40m x 3.10m)
Kitchen/Diner: 14'0 x 13'4 (4.27m x 4.07m)

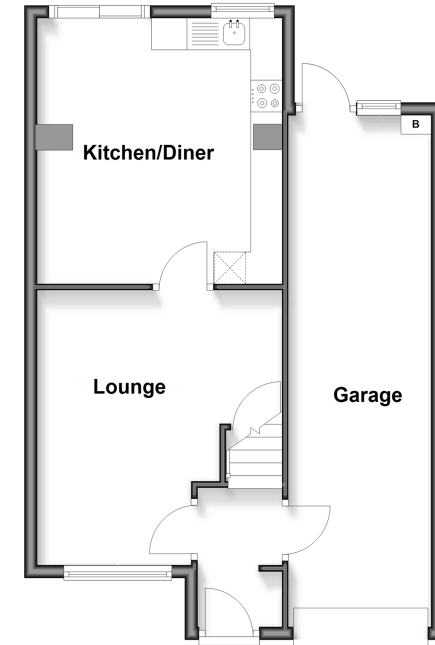
FIRST FLOOR

Landing
Bedroom 1 : 10'3 x 10'0 (3.13m x 3.05m)
Bedroom 2 : 9'5 x 7'0 (2.87m x 2.14m)
Bedroom 3 : 10'5 x 6'8 (3.18m x 2.03m)
Family Bathroom

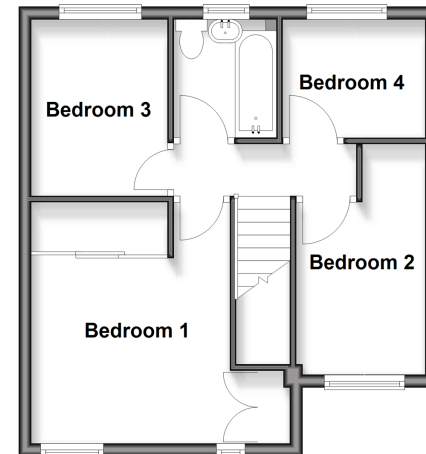
OUTSIDE

Front Garden
Driveway
Integral Garage
Rear Garden

Ground Floor
Approx. 53.9 sq. metres (579.9 sq. feet)



First Floor
Approx. 39.2 sq. metres (421.9 sq. feet)



Call Walderslade - 01634 865661 ■ wardsofkent.co.uk

- Legal advice should be taken to verify fixtures/fittings, planning, alterations and/or lease details
- Appliances & services are untested, dimensions are approximate and floor plans are not to scale
- Through a Homewise Home For Life Plan people aged 60+ can secure this property for up to 59% less, by purchasing a Lifetime Lease.



12144414/20250523/ML/AH