



Guide Price
£375,000

Freehold

4x  2x  1x 

**Hoddern Avenue,
Peacehaven, East
Sussex, BN10**

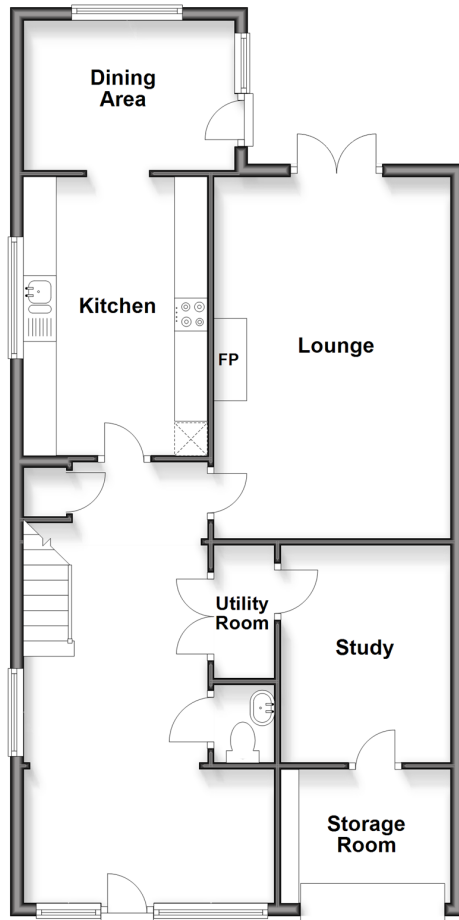
OVER 60?

Secure this property
for up to **59% less!**

cubitt & west
Helping you move forwards

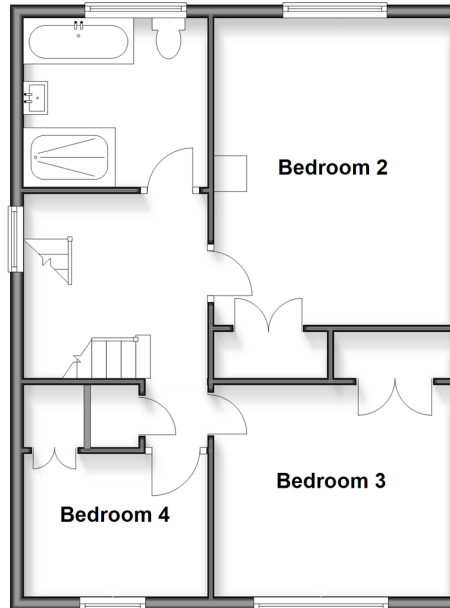
Ground Floor

Approx. 79.5 sq. metres (855.8 sq. feet)



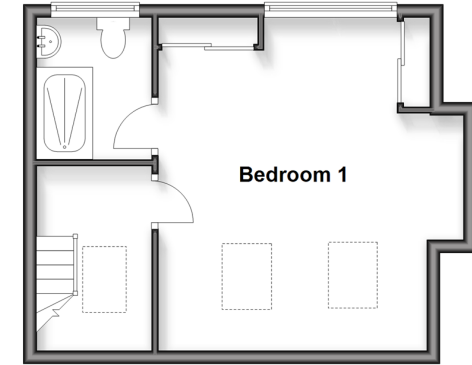
First Floor

Approx. 57.3 sq. metres (616.6 sq. feet)



Second Floor

Approx. 31.3 sq. metres (336.7 sq. feet)



Accommodation

GROUND FLOOR

Entrance Porch

Kitchen: 12'4 x 9'0 (3.76m x 2.75m)

Utility Area: 8'4 x 8'2 (2.54m x 2.49m)

Dining Room: 10'6 x 8'11 (3.20m x 2.72m)

Lounge: 18'6 x 11'10 (5.64m x 3.61m)

Cloakroom

Study: 8'3 x 8'1 (2.52m x 2.47m)

FIRST FLOOR

Bathroom: 9'5 x 8'4 (2.87m x 2.54m)

Bedroom 2: 15'4 x 11'10 (4.68m x 3.61m)

Bedroom 3: 11'9 x 10'11 (3.58m x 3.33m)

Bedroom 4: 9'6 x 7'1 (2.90m x 2.16m)

SECOND FLOOR

Bedroom 1: 15'5 x 15'3 (4.70m x 4.65m)

En-Suite: 7'3 x 5'7 (2.21m x 1.70m)

OUTSIDE

Front & Rear Gardens

Off Road Parking & Garage



Main features

- Large entrance hallway with parquet flooring
- Three large bedrooms and one double
- Large driveway for multiple cars
- Short walk to schools and leisure centre
- Close to transport links to Brighton and Eastbourne



Nearest Schools

Primary Schools: Hoddern Junior School 0.2 miles, Telscombe Cliffs Community Primary 0.8 miles, Meridian Community Primary 1.2 miles

Secondary Schools: Peacehaven Community School 0.9



Transport Information

Train Stations: Newhaven Town 3.9 miles, Newhaven Harbour 4.2 miles, Seaford 4.8 miles



Address

Hoddern Avenue, Peacehaven, East Sussex, BN10



Directions

For directions to this property please contact us.



cubitt&west
Helping you move forwards

Call Peacehaven Branch 01273 584511 ■ cubittandwest.co.uk



■ A private rental licensing scheme applies to some properties in this area, please check with the Local Authority before proceeding

■ Through a Homewise Home For Life Plan people aged 60+ can secure this property for up to 59% less, by purchasing a Lifetime Lease



31809784/20260408/BG/BG