



## Oakleigh Avenue, KT6

### £785,000

A well-proportioned detached bungalow offering over 1300sqft of space, situated on a quiet residential road and offering flexible, comfortable accommodation ideal for families or those seeking predominantly single-level living.

Ideally situated in a popular and quiet residential road, the area has a superb selection of local shops, restaurants and bars, easy access to the A3, popular schools, and Surbiton town centre with its mainline station is just over a mile.

### Features

- Detached House
- Versatile Accommodation
- Large Plot
- Detached Garage
- Off Street Parking
- Potential To Extend (STTP)



## Oakleigh Avenue, KT6

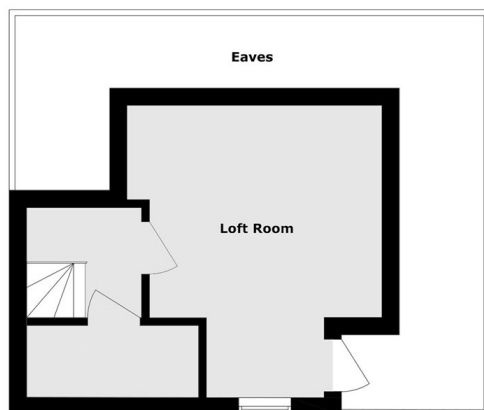
A large entrance hall leads to a spacious reception room and front bedroom. To the rear are two further bedrooms and a well-appointed kitchen, creating a practical and versatile layout, while an additional loft room provides ideal space for guests, a home office, or hobbies.

The property further benefits from a private wraparound garden, off-street parking, and a detached garage.

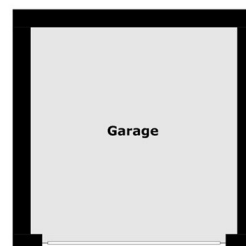
The plot is generous, measuring approximately 18m by 22m, so the property offers excellent scope for extension or redevelopment (STPP)



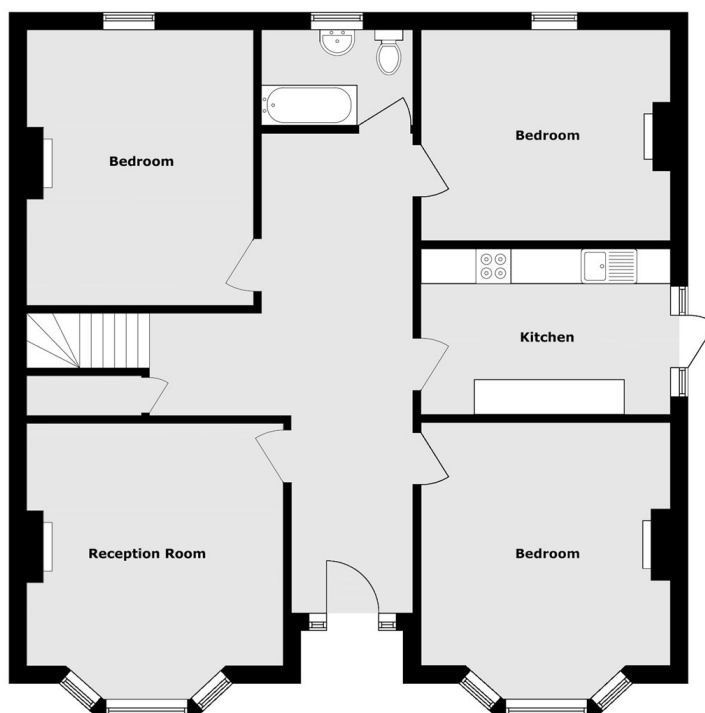
# Oakleigh Avenue, Surbiton, KT6



**First Floor**



**Ground Floor**



**Ground Floor**