



Harlow Common, North Weald Bassett,

£600,000



Geoffrey
Matthew



Having not been on the market in over 50 years, this three bedroom, period, semi-detached cottage with its origins dating back to the 1800's has further additions added in the early 1900's and the newest addition around 2000. What the sellers most like about living here is being close to nature while also being close to the shops and excellent transport links.

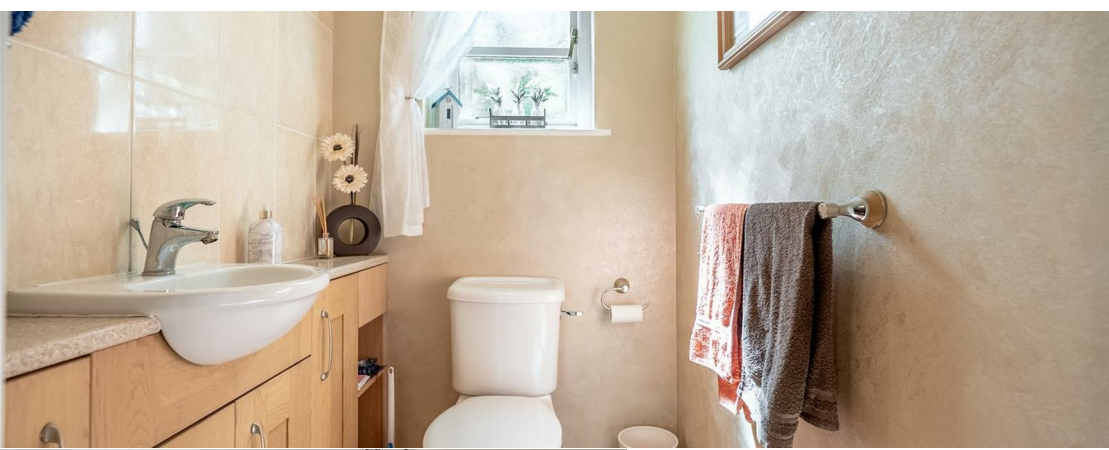
The property has hand built, wooden, double glazed sash windows to match the original style. To the front is a large garden overlooking Harlow Common. To the rear a small country court yard that merges into open woodland. The property has an oil fired heating system.





- Period Three Bedroom Semi
- Large Front Garden
- Backs onto Woodland & Views Over Common
- Oil Fired Heating
- Three Reception Rooms
- Down Stairs WC
- Family Bathroom
- En-Suite
- Countryside Location
- Close to Amenities







Living Room
19'11" x 10'10" (6.07m x 3.30m)

Dining Room
13'10" x 11'4" (4.22m x 3.45m)

Kitchen
12'x104" (3.66mx31.70m)

Reception 2/Home Office
13'2" x 12'2" (4.01m x 3.71m)

Laundry Room
7'6" x 4'10" (2.29m x 1.47m)

Down Stairs WC



Bedroom
15'2" x 11'2" (4.62m x 3.40m)

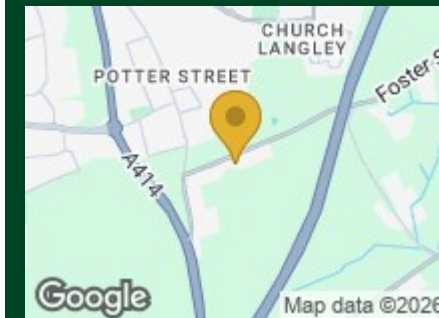
Bedroom 11'9"x9'9"

Bedroom
10'10" x 9'4" (3.30m x 2.84m)

Family Bathroom

En-Suite

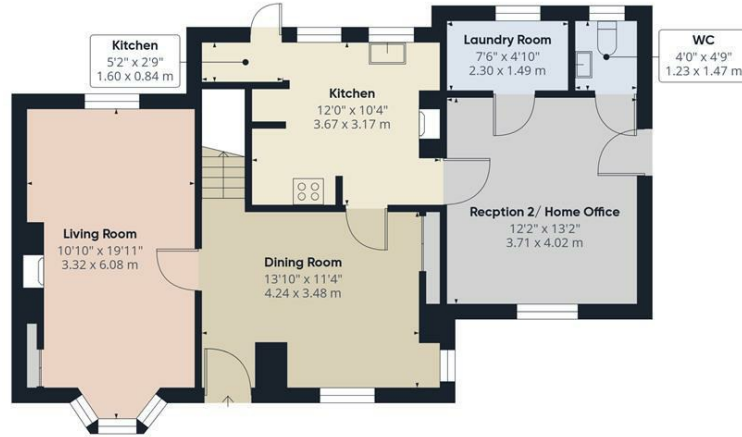




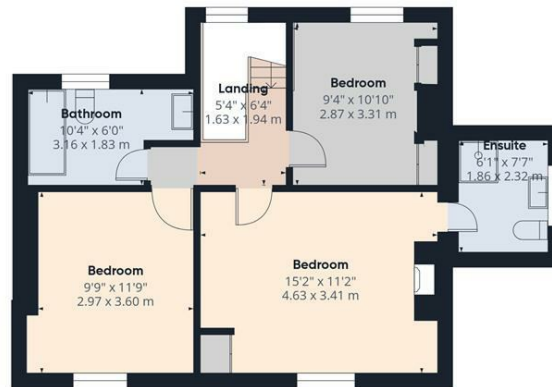
Council Tax Details

Epping Forest E

Energy Efficiency Rating		Environmental Impact (CO ₂) Rating			
	Current	Potential		Current	Potential
Very energy efficient - lower running costs			Very environmentally friendly - lower CO ₂ emissions		
(92-100) A			(02-10) A		
(81-91) B			(11-20) B		
(69-80) C			(21-30) C		
(55-68) D			(31-40) D		
(39-54) E			(41-50) E		
(29-38) F			(51-60) F		
(1-28) G			(61-70) G		
Not energy efficient - higher running costs			Not environmentally friendly - higher CO ₂ emissions		
England & Wales		England & Wales			
EU Directive 2002/91/EC		EU Directive 2002/91/EC			



Floor 0 Building 1



Floor 1 Building 1



Approximate total area^m
 1243 ft²
 115.6 m²

(1) Excluding balconies and terraces

Calculations reference the RICS IPMS 3C standard. Measurements are approximate and not to scale. This floor plan is intended for illustration only.

GIRAFFE360

These particulars, whilst believed to be accurate are set out as a general guideline only and do not constitute any part of an offer or contract. Intending purchasers should not rely on them as statements of representation of fact, but must satisfy themselves by inspection or otherwise as to their accuracy. No person in this firm's employment has the authority to make or give any representation or warranty in respect to the property.

