



5 Cwrt Dyfed, Barry

Barry

In Excess of £380,000



5 Cwrt Dyfed

Barry, Barry

Detached family home with 4 beds, en-suite, & garden. Close to Barry docks link road for easy access to A48 & M4. No chain. Call 01446 502806 to view.

Council Tax band: E

Tenure: Freehold

EPC Energy Efficiency Rating: E

EPC Environmental Impact Rating: E

- FOUR BEDROOM DETACHED
- CONSERVATORY
- EN-SUITE
- CLOAKROOM
- KITCHEN/BREAKFAST ROOM
- DOUBLE GLAZED
- GAS CENTRAL HEATING
- ENCLOSED REAR GARDEN
- DRIVEWAY
- NO ONGOING CHAIN





Hallway

Wood effect laminate flooring. Radiator. Staircase rising to first floor with spindled balustrade and fitted carpet. Flat plastered walls. Coved and textured ceiling. Doors into :-

Cloakroom/ WC

Ceramic tiled flooring. Close coupled WC, close coupled WC and pedestal wash hand basin. Radiator. Obscure window to front.

Lounge

14' 9" x 13' 1" (4.50m x 3.99m)

Wood effect laminate flooring. Box bay window to front. Feature fireplace. Coved and textured ceiling. Archway into :-

Dining Room

11' 6" x 8' 2" (3.51m x 2.49m)

Continuation of flooring and décor. Radiator. Window to side. Patio doors into :-

Kitchen/Breakfast Room

11' 6" x 16' 3" (3.51m x 4.95m)

Slate tile effect flooring. A range of base and eye level units with complementing work surfaces. Inset sink with mixer tap over. Built in oven and hob with cooker hood over. Spaces for fridge, freezer and breakfast table. Radiator. Window to rear. Under stairs storage cupboard. Door into Utility room. Further window to side. French doors with vertical blinds opening to rear garden. Serving arch into the Conservatory. Door into :-

Utility Room

5' 7" x 5' 11" (1.70m x 1.80m)

Continuation of flooring. Work surface with inset sink Plumbing and space for washing machine. Tiling to splash backs. Half glazed door giving side access. Further door into :-

Home office/Family room

8' 5" x 8' 2" (2.57m x 2.49m)

Wood effect laminate flooring. Window to side. Door into storage room. Power and lighting.



Landing

Fitted carpet, Spindled balustrade. Textured ceiling with loft access. Doors into :-

Bedroom One

12' 1" x 9' 1" (3.68m x 2.77m)

Fitted carpet, window to rear, radiator. Built in wardrobes with sliding mirrored doors. Panelled door into :-

En-suite

A three piece suite in white comprising of a concealed back WC. Wash hand basin inset into a vanity unit and a single sized shower cubicle with shower over. Fully tiled walls. Obscure window to side.

Bedroom Two

13' 7" x 8' 0" (4.14m x 2.44m)

Fitted carpet, window to rear. Flat plastered walls. Radiator.

Bedroom Three

14' 9" x 8' 9" (4.50m x 2.67m)

Fitted carpet, radiator. Window to front.

Bedroom Four

11' 2" x 9' 1" (3.40m x 2.77m)

Another double sized bedroom. Radiator. Window to front. with vertical blind. Wood effect vinyl flooring.

Bathroom

Vinyl flooring. A three piece suite in white comprising of close coupled WC, pedestal wash hand basin. Panelled bath. Shower head mixer tap and a glass shower head over. Obscure window to front.

Garden

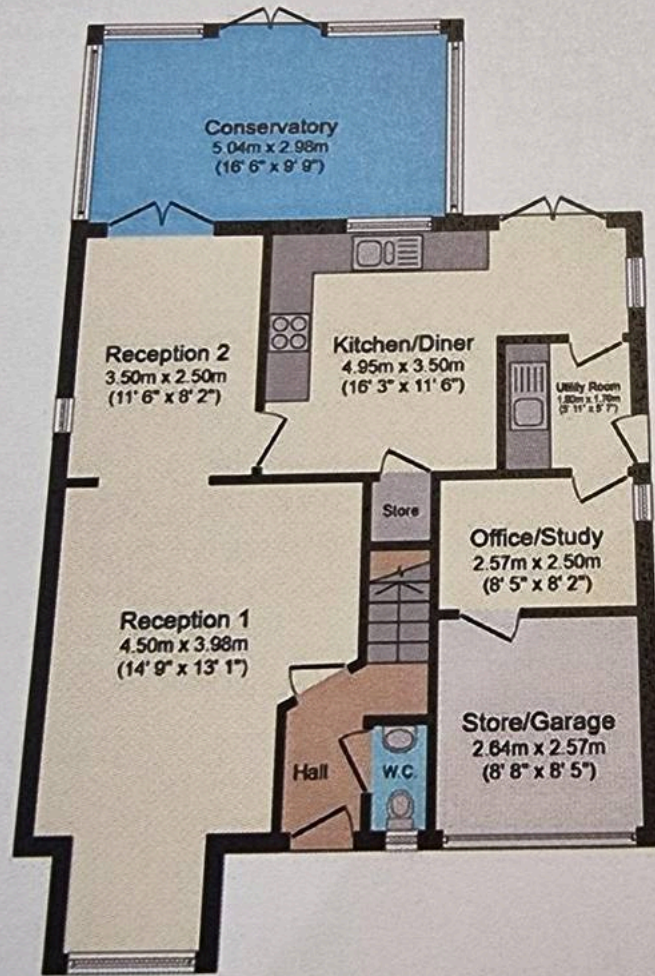
Tarmac driveway to front with borders to the side. Gate giving side access.. An enclosed garden with trees to rear acting as a privacy screen. Raised decked patio area. Artificial lawn. Sunken area with washing line. Gate given side access.

Garage

Double Garage - Garage and Driveway to the front

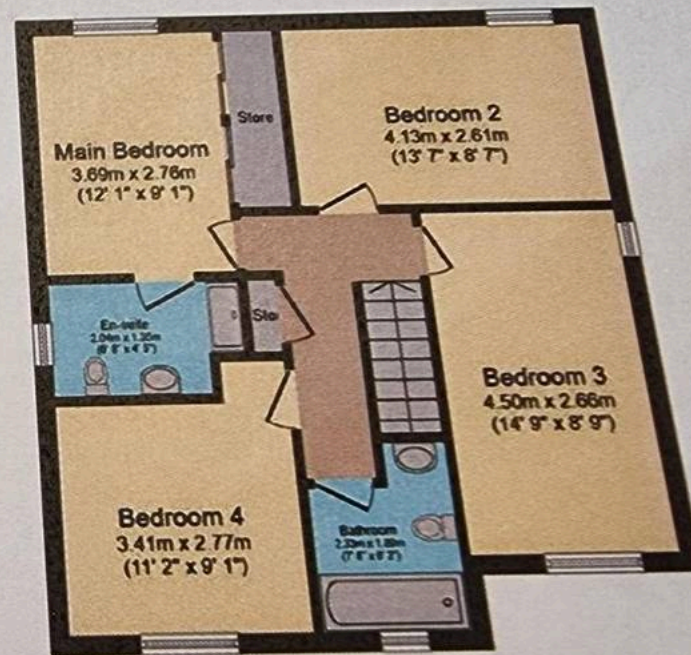






Ground Floor

Floor area 79.2 m² (853 sq.ft.)



First Floor

Floor area 58.8 m² (633 sq.ft.)



Daniel Matthew Estate Agents Barry

14 High Street Barry, Vale of Glamorgan - CF62 7EA

01446502806

barry@danielmatthew.co.uk

www.danielmatthew.co.uk/

DanielMatthew
ESTATE AGENTS