



DANIEL ARCHER

exp[®] UK




@ daniel.archer@exp.uk.com

🌐 danielarcher.exp.uk.com

☎ 07792 947 756

2 West Temple Sheen,

£2,295,000

 5  4  3

- VIDEO TOUR AVAILABLE - PLEASE WATCH
- Recently Constructed With Warranties
- Outstanding Open Plan Family, Entertaining and Living Space
- Energy Efficient Home with Air Source Heat Pump
- Moments from Richmond Park, East Sheen & Outstanding Schools
- Possibly One Of East Sheen's Best Value Detached Homes £765 per Sq Ft
- Approximately 3000 sq ft
- Five Double Bedrooms, Four Bathrooms (Including Two En-Suite)
- Landscaped Garden and Patios
- Property Reference DA0587

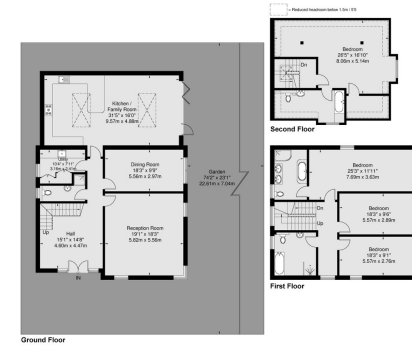


Approximately 3,000 sq ft of beautifully balanced family accommodation moments from Richmond Park. Five double bedrooms, four bathrooms, outstanding open plan living space and excellent energy efficiency. Arguably one of East Sheen's best value detached homes. Watch the video tour.





West Temple Sheen
 Approx Gross Internal Area
 Ground Floor = 139 Sq m / 1496 Sq Ft
 First Floor = 90.9 Sq m / 977 Sq Ft
 Second Floor = 58.1 Sq m / 625 Sq Ft
 Total = 287.9 Sq m / 3098 Sq Ft



Viewmedia © 2020
 Viewmedia.co.uk
 Whilst every effort has been made to ensure the accuracy of this floor plan, measurements of doors, windows and rooms are approximate and its responsibility is given for any error or omission. This specification is for identification purposes only. Not drawn to scale, unless stated. Dimensions shown are to the nearest 2" and are to the points indicated by the arrow heads.

