



Markham Street

Chelsea, SW3

£8,500 per month
(£1,961.54 per week)

A charming, very well presented 4 bedroom town house, situated in this highly sought after street close to the Kings Road. Spacious reception room, modern kitchen & dining room, 2 shower rooms & fantastic master suite. Patio garden.

CHESTERTONS



Markham Street

Chelsea, SW3

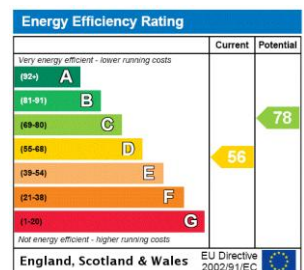
- 4 bedroom, 3.5 bathroom town house
- Private patio garden and further balcony situated on the 1st and 2nd floors
- Private garage and drive
- Moments away from Kings Road and local amenities



Whilst providing ample living space, this house benefits from 4 bedrooms situated on first and second floors. Second floor (master floor) benefits from a great sized double bedroom benefiting from its own en-suite as well as a great balcony. Three bedrooms and two bathrooms (one en-suite) is located on the first floor and two bedrooms benefit from their own Juliet balcony. On the ground level, the living space is laid out perfectly to suit the needs of a small/medium sized family.

This beautiful town house is located on Markham Street, only a short walk away from Kings Road and Sloane Avenue providing easy access to Sloane Square Station and South Kensington Station. All

Minimum Term: 12 months
Deposit Required: £11,769.23
Local Authority: Royal Borough of Kensington & Chelsea
Council Tax Band: H
EPC Rating: D
Unfurnished



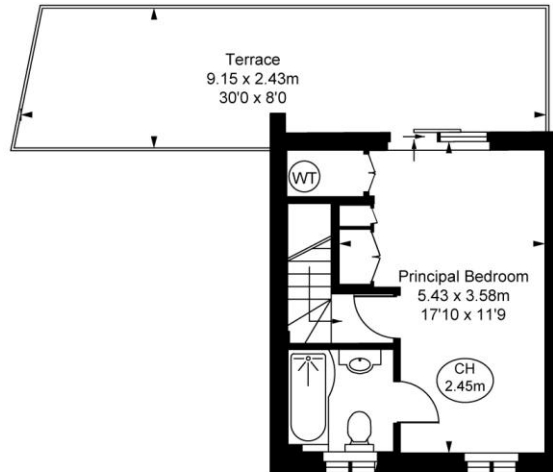
Chestertons Chelsea Lettings

17 Cale Street
 London
 SW3 3QR
 chelsealettingsusers@chestertons.co.uk
 02075944750
 chestertons.co.uk

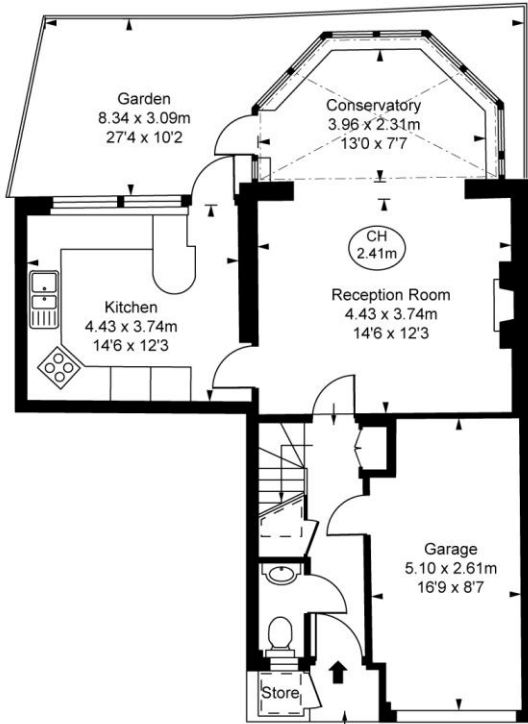
Additional tenant charges apply (fees apply to non-AST tenancies only)
 Tenancy Agreement Fee: £300
 References per Tenant/Guarantor: £60
 Inventory check (approx. £100 – £250 inc. VAT)
 chestertons.co.uk/property-to-rent/applicable-fees

Markham Street, SW3
 Approximate Gross Internal Area
128.94 sq m / 1,388 sq ft

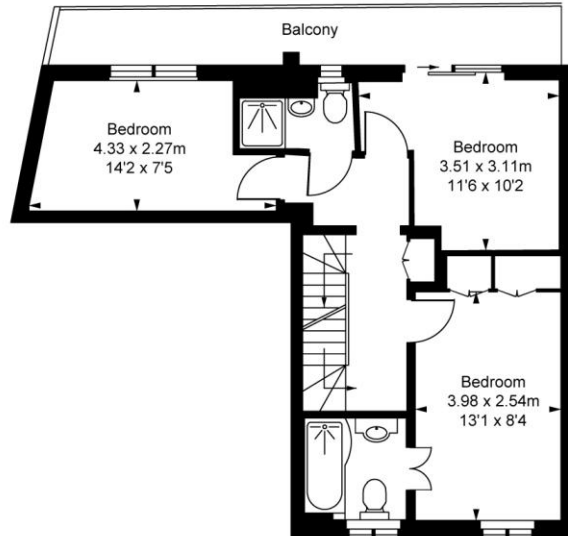
(Including restricted height
 under 1.5m (-----))
 (CH = Ceiling Heights)



Second Floor
 Approximate Gross Internal Area
 23.88 sq m / 257 sq ft



Ground Floor
 Approximate Gross Internal Area
 60.17 sq m / 648 sq ft



First Floor
 Approximate Gross Internal Area
 44.89 sq m / 483 sq ft

This plan is not to scale. It is for guidance and not for valuation purposes.
 All measurements and areas are approximate only, and have been prepared in accordance with the current edition of the RICS Code of Measuring Practice.
 © Fulham Performance

