

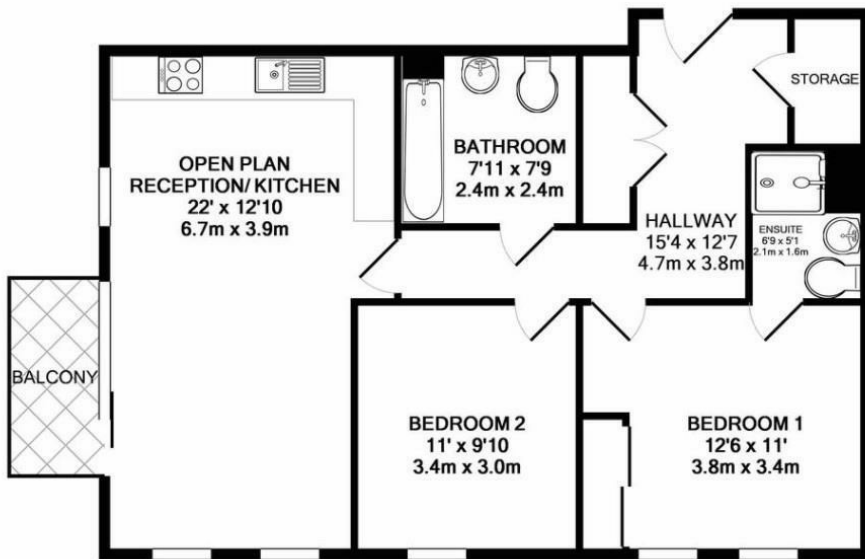


HIERRO COURT, E1

£2,350 PER MONTH

- Top Floor Flat
- Two Bathrooms
- Private West Facing Balcony
- Two Double Bedrooms
- High Spec Kitchen
- Communal Gardens

wj.
meade



W J Meade are excited to present this spectacular top floor two-bedroom apartment to the market situated just a stone away from Mile End and Limehouse Station. This property consists of two double bedrooms, two bathrooms, open plan fully fitted kitchen and lounge with stunning finishes. You also have the luxury of having your own private south west facing balcony overlooking the Shard. The spectacular ceiling to floor windows allow ample light throughout the property.

Deposit is 5 week's rent.

All sizes are approximate. The Agent has not tested any apparatus, equipment, fixtures and fittings, or services and so cannot verify that they are in working order or fit for the purpose. A buyer is advised to obtain verification from their Solicitors or Surveyor. Photographs are for illustration purposes only and may depict items, which are not for sale or included in the sale price. References to tenure of a property are based upon information supplied by the vendor. The agent has not had sight of the title documents, a buyer is advised to obtain verification from their solicitor. Money Laundering Regulations 2003: Intending purchasers will be asked to produce identification, documentation at a later stage and we would ask for your co-operation in order that there will be no delay in agreeing the sale.

These particulars are intended to give a fair description of the property only and are in no way guaranteed, nor do they form part of any contract. They are issued on the express condition that all negotiations are conducted through W.J. Meade Estate Agents. All subject to contract and to being unsold.

Service charge £n/a
 Ground rent £n/a
 Reserve fund £n/a
 n/a years lease
 Council tax band D
 Current EPC Rating 82
 Tenure:

